

LSAS-N15HS Medium type High-thrust type Actuator width: 150 mm Single-slider



Model Specification Items	LSAS - N15HS - G - 200S - [] - T2 - [] - []
	Series — Type — Encoder model — Corresponding driver output — Stroke — Applicable controllers — Cable length — Options
	G: Serial encoder, quasi-absolute type 200S: 200W 100: 100 mm 4100: 4100 mm (every 100 mm) T2: SSEL, XSEL-P/Q N: None S: 3 m M: 5 m X [] []: Specified length
	Refer to the option table below.

* For contents of the model specification items, refer to page 2.

Model Number/Specification

Model number	Encoder model	Corresponding driver output (W)	Stroke Every 100 mm (mm)	Speed (Note 1) (mm/s)	Payloads (Note 2)		Rated thrust (N)	Maximum thrust (N)	Maximum acceleration (G) (Note 2)
					Horizontal (kg)	Vertical (kg)			
LSAS-N15HS-G-200S-[1]-T2-[2]-[3]	Serial encoder, quasi-absolute	200S	100~4100	1~2500	30	—	125	Refer to P5	3

* In the above model number, [1] represents the stroke, [2] represents the cable length, and [3] represents the selected option(s).

Option

Name	Model number	Page	Remarks
Cable track installation direction	CT2~4	→ P2	Installation direction 2 to 4
User cable track, S type	US1~US4	→ P2	Installation direction 1 to 4
User cable track, M type	UM1~UM4	→ P2	Installation direction 1 to 4

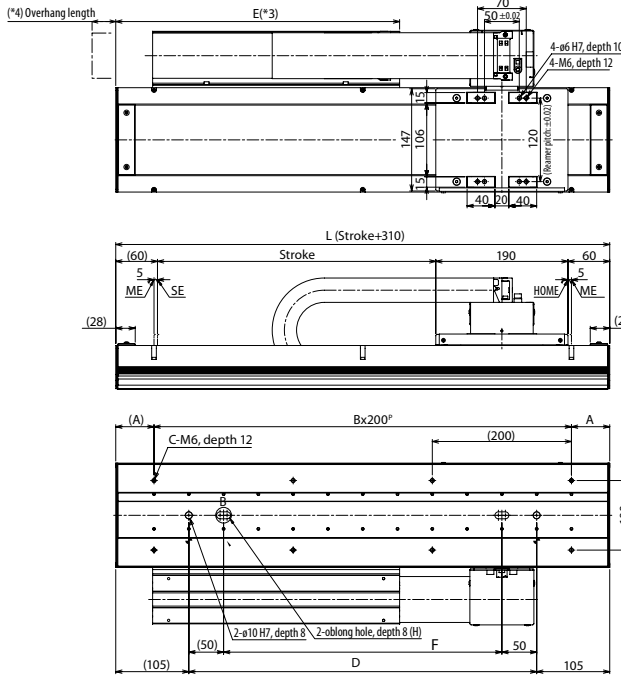
Common Specifications

Drive method	Linear servo motor
Positioning repeatability	±0.005 mm
Allowable dynamic moment (Note 3)	Ma: 155.8 N·m Mb: 91.1 N·m Mc: 71.5 N·m
Overhang load length	450 mm max. in Ma direction, 450 mm max. in Mb/Mc directions
Base	Material: Aluminum with black alumite treatment
Applicable controllers	T2: SSEL, XSEL-P/Q
Cable length (Note 4)	N: None S: 3 m M: 5 m X [] []: Specified length
Ambient operating temperature	0 to 40°C, 85% RH max. (No condensation)

Diagram

CAD drawings are available for download from our website.

2D CAD



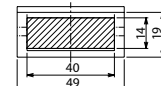
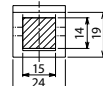
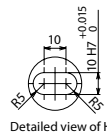
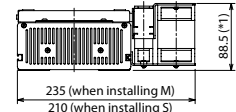
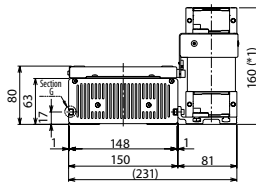
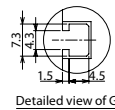
ME: Mechanical End
SE: Stroke End

(*1) The cable track may expand and become slightly larger than the dimensions shown below.

(*2) The user cable track can be used only when the stroke is 2000 mm or less.

(*3) With the user cable track specification, dimension E corresponds to "55 mm less than the dimension shown in the table."

(*4) The cable track overhang length is as follows:
Standard cable track: 10 mm max.
User cable track: 20 mm max.



Stroke	100	200	300	400	500	600	700	800	900	1000	1100	1200	1300	1400	1500	1600	1700	1800	1900	2000	2100	2200	2300	2400	2500	2600	2700	2800	2900	3000	3100	3200	3300	3400	3500	3600	3700	3800	3900	4000	4100				
L	410	510	610	710	810	910	1010	1110	1210	1310	1410	1510	1610	1710	1810	1910	2010	2110	2210	2310	2410	2510	2610	2710	2810	2910	3010	3110	3210	3310	3410	3510	3610	3710	3810	3910	4010	4110	4210	4310	4410				
A	105	55	105	55	105	55	105	55	105	55	105	55	105	55	105	55	105	55	105	55	105	55	105	55	105	55	105	55	105	55	105	55	105	55	105	55	105	55	105	55	105	55	105	55	105
B	1	2	2	3	3	4	4	5	5	6	6	7	7	8	8	9	9	10	10	11	11	12	12	13	13	14	14	15	15	16	16	17	17	18	18	19	19	20	20	21	21	21	21	21	21
C	4	6	6	8	8	10	10	12	12	14	14	16	16	18	18	20	20	22	22	24	24	26	26	28	28	30	30	32	32	34	34	36	36	38	38	40	40	42	42	44	44	44	44	44	44
D	200	300	400	500	600	700	800	900	1000	1100	1200	1300	1400	1500	1600	1700	1800	1900	2000	2100	2200	2300	2400	2500	2600	2700	2800	2900	3000	3100	3200	3300	3400	3500	3600	3700	3800	3900	4000	4100	4200	4200	4200	4200	
E	250	305	355	405	455	505	555	605	655	705	755	805	855	905	955	1005	1055	1105	1150	1205	1255	1305	1355	1405	1455	1505	1555	1605	1655	1705	1755	1805	1855	1905	1955	2005	2055	2105	2155	2205	2255	2255	2255	2255	
F	100	200	300	400	500	600	700	800	900	1000	1100	1200	1300	1400	1500	1600	1700	1800	1900	2000	2100	2200	2300	2400	2500	2600	2700	2800	2900	3000	3100	3200	3300	3400	3500	3600	3700	3800	3900	4000	4100	4100	4100	4100	
Mass (kg)	10.3	11.6	13.0	14.3	15.6	16.9	18.2	19.5	20.8	22.2	23.5	24.8	26.1	27.4	28.7	30.0	31.4	32.7	34.0	35.3	36.6	37.9	39.2	40.6	41.9	43.2	44.5	45.8	47.1	48.4	49.8	51.1	52.4	53.7	55.0	56.3	57.6	59.0	60.3	61.6	62.9	62.9	62.9	62.9	

Applicable Controller Specifications

Applicable controllers	Maximum number of controlled axes	Operating method	Power-supply voltage	Page
XSEL-P/Q	6 axes	Program	Single/three-phase 200 VAC	→ P13
SSEL	2 axes	Program/positioner	Single-phase 200 VAC	→ P13



- (Note 1) If the stroke is short, the maximum speed may not be reached.
 (Note 2) Varies depending on the operating conditions. (Refer to P5)
 Take note that this actuator can be installed only horizontally (it cannot be used vertically, lying on its side, hanging from the ceiling, etc.)
 (Note 3) Based on a traveling life of 10,000 km.
 (Note 4) The maximum cable length is 20 mm.
 Specify a desired length in m.
 (Example: X08 = 8 m)