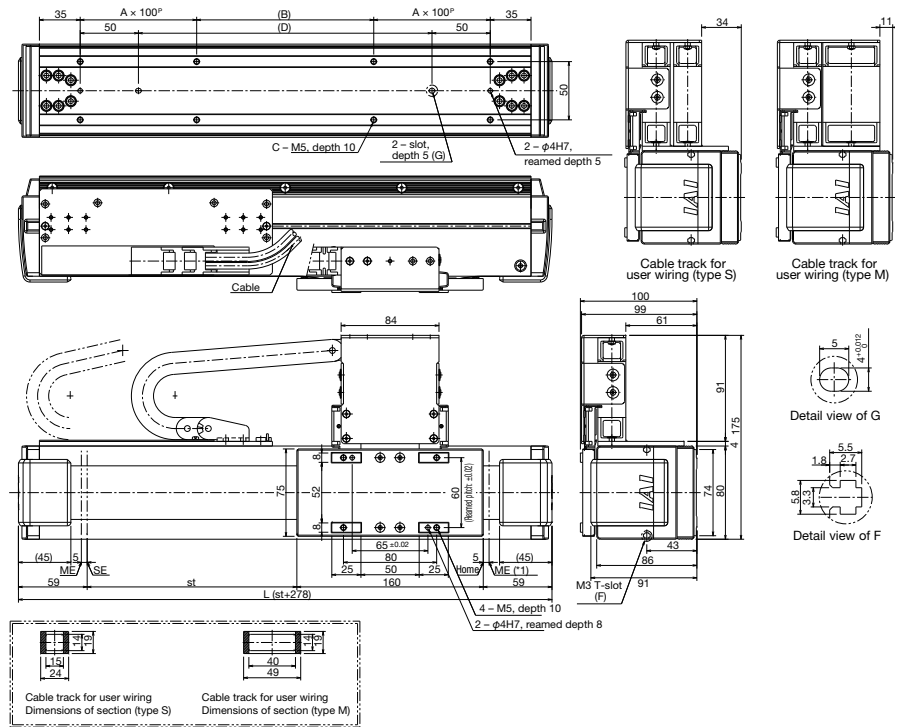


Dimensions – Sideway Specification (Standard)

You can download CAD drawings from our website.

2D CAD

*1 During home return, the slider will move to the ME. Accordingly, pay attention to possible contact between the slider and surrounding structures, etc.
ME: Mechanical end
SE: Stroke end



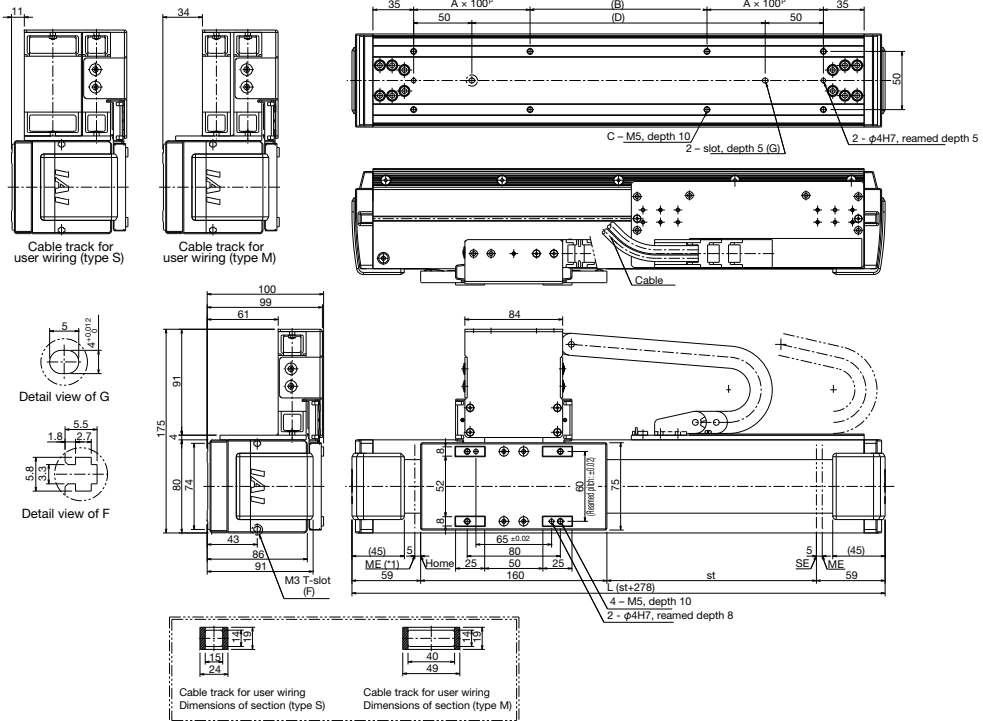
Stroke	60	120	180	240	300	360	420	480	540	600	660	720	780	840	900	960	1020	1080	1140	1200	1260	1320	1380	1440	1500	1560	1620
L	338	398	458	518	578	638	698	758	818	878	938	998	1058	1118	1178	1238	1298	1358	1418	1478	1538	1598	1658	1718	1778	1838	1898
A	1	1	1	2	2	2	2	3	3	3	4	4	4	5	5	5	5	6	6	6	7	7	7	8	8	8	8
B	32	92	152	12	72	132	192	52	112	172	32	92	152	12	72	132	192	52	112	172	32	92	152	12	72	132	192
C	8	8	8	12	12	12	12	16	16	16	20	20	20	24	24	24	24	28	28	28	32	32	32	36	36	36	36
D	132	192	252	312	372	432	492	552	612	672	732	792	852	912	972	1032	1092	1152	1212	1272	1332	1392	1452	1512	1572	1632	1692
Weight (kg)	4.9	5.2	5.6	5.9	6.3	6.6	7.0	7.4	7.7	8.1	8.4	8.8	9.2	9.5	9.9	10.2	10.6	10.9	11.3	11.7	12.0	12.4	12.7	13.1	13.4	13.8	14.2

Dimensions – Sideway Specification (Cable Track, Opposite)

You can download CAD drawings from our website.

2D CAD

*1 During home return, the slider will move to the ME. Accordingly, pay attention to possible contact between the slider and surrounding structures, etc.
ME: Mechanical end
SE: Stroke end



Stroke	60	120	180	240	300	360	420	480	540	600	660	720	780	840	900	960	1020	1080	1140	1200	1260	1320	1380	1440	1500	1560	1620
L	338	398	458	518	578	638	698	758	818	878	938	998	1058	1118	1178	1238	1298	1358	1418	1478	1538	1598	1658	1718	1778	1838	1898
A	1	1	1	2	2	2	2	3	3	3	4	4	4	5	5	5	5	6	6	6	7	7	7	8	8	8	8
B	32	92	152	12	72	132	192	52	112	172	32	92	152	12	72	132	192	52	112	172	32	92	152	12	72	132	192
C	8	8	8	12	12	12	12	16	16	16	20	20	20	24	24	24	24	28	28	28	32	32	32	36	36	36	36
D	132	192	252	312	372	432	492	552	612	672	732	792	852	912	972	1032	1092	1152	1212	1272	1332	1392	1452	1512	1572	1632	1692
Weight(kg)	4.9	5.2	5.6	5.9	6.3	6.6	7.0	7.4	7.7	8.1	8.4	8.8	9.2	9.5	9.9	10.2	10.6	10.9	11.3	11.7	12.0	12.4	12.7	13.1	13.4	13.8	14.2

Shaft type

Small type

Flat type

Medium type

Large type