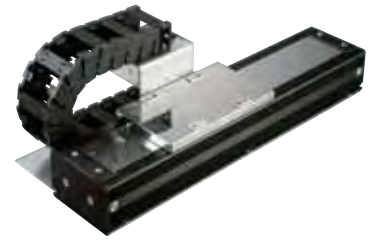


# LSA-N10SS

Medium type Actuator width: 100 mm  
Standard type Single-slider



Model Specification Items

**LSA - N10SS - I - 100S - [ ] - T2 - [ ] - [ ]**

Series — Type — Encoder model — Corresponding driver output — Stroke — Applicable controllers — Cable length — Options

I: Incremental specification  
100S: 100W  
100: 100 mm  
4100: 4100 mm (every 100 mm)  
T2: SCON  
SSEL  
XSEL-P/Q  
N: None  
S: 3 m  
M: 5 m  
X [ ] [ ]: Specified length  
Refer to the option table below.

\* For contents of the model specification items, refer to page 2.

## Model Number/Specification

Model number	Encoder model	Corresponding driver output (W)	Stroke Every 100 mm (mm)	Speed (Note 1) (mm/s)	Payloads (Note 2)		Rated thrust (N)	Maximum thrust (N)	Maximum acceleration (G) (Note 2)
					Horizontal (kg)	Vertical (kg)			
LSAS-N10SS-I-100S-①-T2-②-③	Serial encoder, quasi-absolute	100S	100~4100	1~2500	15	—	54	162	3

\* In the above model number, ① represents the stroke, ② represents the cable length, and ③ represents the selected option(s).

## Option

Name	Model number	Page	Remarks
Cable track installation direction	CT2~4	→ P2	Installation direction 2 to 4
User cable track, S type	US1~US4	→ P2	Installation direction 1 to 4
User cable track, M type	UM1~UM4	→ P2	Installation direction 1 to 4

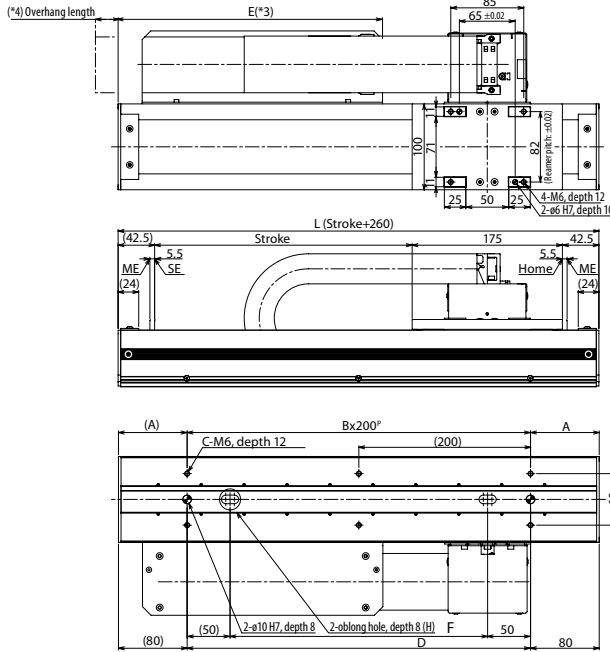
## Common Specifications

Drive method	Linear servo motor
Positioning repeatability	±0.005 mm
Allowable dynamic moment (Note 3)	Ma: 76.4 N·m Mb: 46.3 N·m Mc: 25.7 N·m
Overhang load length	340 mm max. in Ma direction, 340 mm max. in Mb/Mc directions
Base	Material: Aluminum with black alumite treatment
Applicable controllers	T2: SCON, SSEL, XSEL-P/Q
Cable length (Note 4)	N: None S: 3 m M: 5 m X [ ] [ ]: Specified length
Ambient operating temperature	0 to 40°C, 85% RH max. (No condensation)

## Diagram

CAD drawings are available for download from our website.

2D CAD



- (\*1) The cable track may expand and become slightly larger than the dimensions shown below.
- (\*2) The user cable track can be used only when the stroke is 2000 mm or less.
- (\*3) With the user cable track specification, dimension E corresponds to "60 mm less than the dimension shown in the table."
- (\*4) The cable track overhang length is as follows:  
Standard cable track: 10 mm max.  
User cable track: 20 mm max.

Stroke	100	200	300	400	500	600	700	800	900	1000	1100	1200	1300	1400	1500	1600	1700	1800	1900	2000	2100	2200	2300	2400	2500	2600	2700	2800	2900	3000	3100	3200	3300	3400	3500	3600	3700	3800	3900	4000	4100		
L	360	460	560	660	760	860	960	1060	1160	1260	1360	1460	1560	1660	1760	1860	1960	2060	2160	2260	2360	2460	2560	2660	2760	2860	2960	3060	3160	3260	3360	3460	3560	3660	3760	3860	3960	4060	4160	4260	4360		
A	80	30	80	30	80	30	80	30	80	30	80	30	80	30	80	30	80	30	80	30	80	30	80	30	80	30	80	30	80	30	80	30	80	30	80	30	80	30	80	30	80	30	80
B	1	2	2	3	3	4	4	5	5	6	6	7	7	8	8	9	9	10	10	11	11	12	12	13	13	14	14	15	15	16	16	17	17	18	18	19	19	20	20	21	21	22	
C	4	6	6	8	8	10	10	12	12	14	14	16	16	18	18	20	20	22	22	24	24	26	26	28	28	30	30	32	32	34	34	36	36	38	38	40	40	42	42	44	44		
D	200	300	400	500	600	700	800	900	1000	1100	1200	1300	1400	1500	1600	1700	1800	1900	2000	2100	2200	2300	2400	2500	2600	2700	2800	2900	3000	3100	3200	3300	3400	3500	3600	3700	3800	3900	4000	4100	4200		
E	230	280	330	380	430	480	530	580	630	680	73-	780	830	880	930	980	1030	1080	1130	1180	1230	1280	1330	1380	1430	1480	1530	1580	1630	1680	1730	1780	1830	1880	1930	1980	2030	2080	2130	2180	2230		
F	100	200	300	400	500	600	700	800	900	1000	1100	1200	1300	1400	1500	1600	1700	1800	1900	2000	2100	2200	2300	2400	2500	2600	2700	2800	2900	3000	3100	3200	3300	3400	3500	3600	3700	3800	3900	4000	4100		
Mass (kg)	8.0	9.1	10.2	11.3	12.3	13.4	14.5	15.6	16.7	17.8	18.9	19.9	21.0	22.1	23.2	24.3	25.4	26.5	27.5	28.6	29.7	30.8	31.9	33.0	34.1	35.1	36.2	37.3	38.4	39.5	40.6	41.7	42.8	43.8	44.9	46.0	47.1	48.2	49.3	50.4	51.4		

## Applicable Controller Specifications

Applicable controllers	Maximum number of controlled axes	Operating method	Power-supply voltage	Page
XSEL-P/Q	6 axes	Program	Single/three-phase 200 VAC	→ P13
SSEL	2 axes	Program/positioner	Single-phase 200 VAC	→ P13
SCON	1 axis	Pulse/positioner	Single-phase 200 VAC	→ P13



- (Note 1) If the stroke is short, the maximum speed may not be reached.
- (Note 2) Varies depending on the operating conditions. (Refer to P5)  
Take note that this actuator can be installed only horizontally (it cannot be used vertically, lying on its side, hanging from the ceiling, etc.)
- (Note 3) Based on a traveling life of 10,000 km.
- (Note 4) The maximum cable length is 20 mm.  
Specify a desired length in m.  
(Example: X08 = 8 m)