

ELECYLINDER®

INTRODUCTION CATALOG



www.intelligentactuator.com

Please see main ELECYLINDER catalog for full options.

Built-in controller

ELECYLINDER®

Full lineup

EC

ELECYLINDER



Built-in ball circulation linear guide

Slider type

Standard

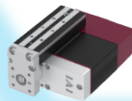
Long stroke
Belt drive

Built-in 4-row guide
High rigidity



Rod

Standard



Table

Mini type

[TC4/TW4]

Stroke: 30, 50mm

Maximum payload: horizontal 8kg / vertical 2.5kg

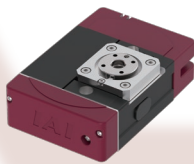
Dust-proof and splash-proof

IP67

Built-in ball circulation linear guide

Radial cylinder®

Built-in 4-row guide
High rigidity



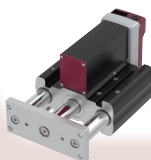
Rotary

[RTC9/RTC12]

Maximum swing angle: 330 degrees

Maximum speed: 600 degrees / s

Standard



Stopper cylinder

[ST15]

Maximum workpiece collision speed: 40m / min [Work mass: 9kg]

16m / min [Work mass: 50kg]

Maximum work load: 50kg

Built-in ball circulation linear guide

Radial cylinder®



compatible with
the digital speed controller



[S3/S4/S6/S7]
Stroke: 50~500mm
Maximum payload: horizontal 51kg/vertical 19kg



Motor side-mounted

[S3□R/S4□R/S6□R/S7□R]
Stroke: 50~500mm
Maximum payload: horizontal 51kg/vertical 19kg



[B6/B7]
Stroke: 300~2600mm
Maximum payload: horizontal 20kg



[S6□AH/S7□AH]
Stroke: 50~800mm
Maximum payload: horizontal 51kg/vertical 25kg



Motor side-mounted

[S6□AHR/S7□AHR]
Stroke: 50~800mm
Maximum payload: horizontal 51kg/vertical 25kg

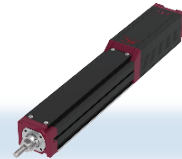


[R6/R7]
Stroke: 50~300mm
Maximum payload: horizontal 80kg/vertical 19kg

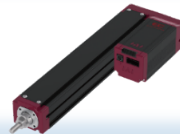


Mini type

[RP4/GS4/GD4]
Stroke: 30, 50mm
Maximum payload: horizontal 8kg/vertical 2.5kg

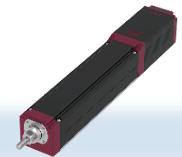


[RR3/RR4/RR6/RR7]
Stroke: 50~315mm
Maximum payload: horizontal 80kg/vertical 19kg

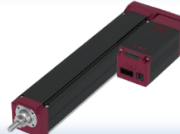


Motor side-mounted

[RR3□R/RR4□R/RR6□R/RR7□R]
Stroke: 50~315mm
Maximum payload: horizontal 80kg/vertical 19kg



[RR6□AH/RR7□AH]
Stroke: 50~500mm
Maximum payload: horizontal 80kg/vertical 28kg

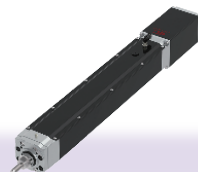


Motor side-mounted

[RR6□AHR/RR7□AHR]
Stroke: 50~500mm
Maximum payload: horizontal 80kg/vertical 28kg



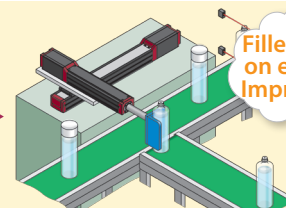
[R6□W/R7□W]
Stroke: 50~300mm
Maximum payload: horizontal 80kg/vertical 19kg



[RR6□W/RR7□W]
Stroke: 65~315mm
Maximum payload: horizontal 80kg/vertical 19kg



Application
examples are



Filled with tips
on equipment
improvement!!

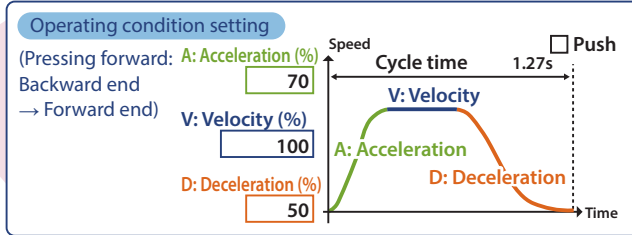
ELECYLINDER...

SIMPLE SETTING

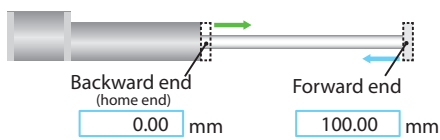
- We emphasized usability of positioning between **two points**.

Only the start point and end point need to be set. Setup is very simple.

"Touch Panel Teaching Pendant TB-03"



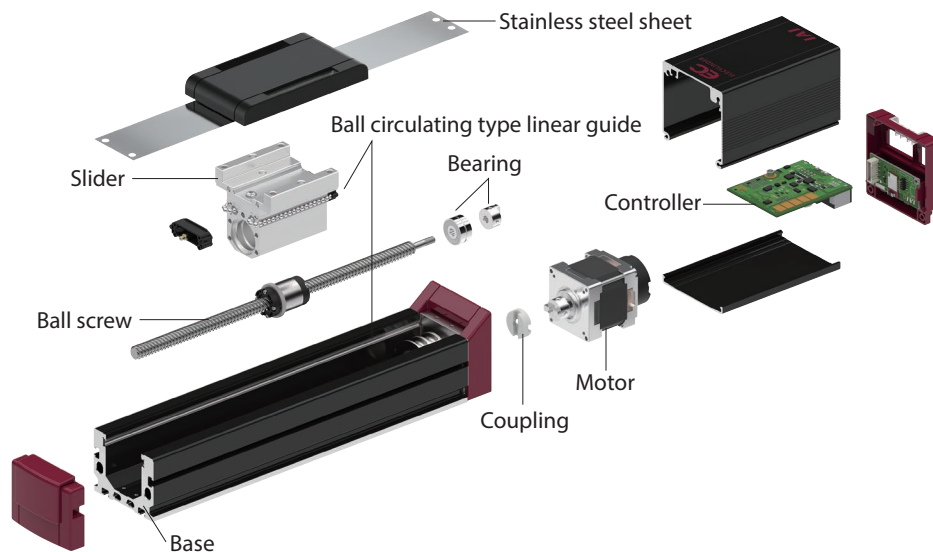
Target position setting



Slider type

COST REDUCTION

- All-in-one



Radial Cylinder

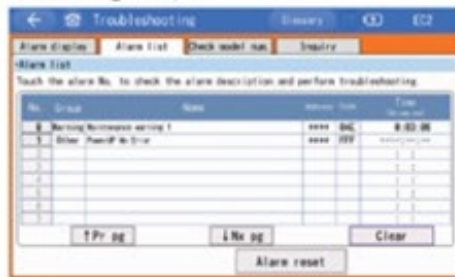


Rod type

PEACE OF MIND

● Easily repairable in the event of a breakdown.

The teaching pendant provides interactive and easy-to-understand troubleshooting and maintenance methods. It provides peace of mind in case of emergency.



The touch panel teaching pendant "TB-03" also supports **wireless operation.**

Touch Panel Teaching Pendant TB-03



ELECYLINDER®

What is a digital speed controller?

No need to connect a PC or teaching pendant!

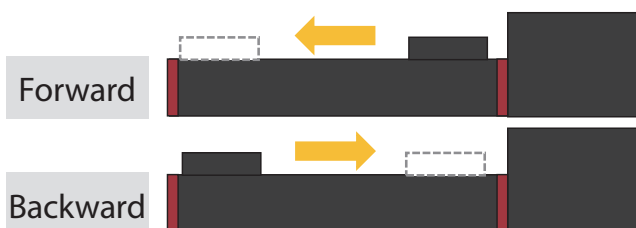
Operation settings and test runs can be done from a panel on **the ELECYLINDER body!**



Test run

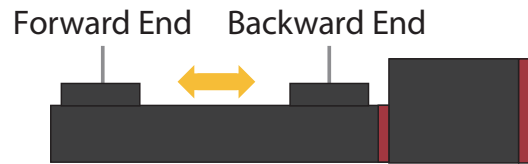
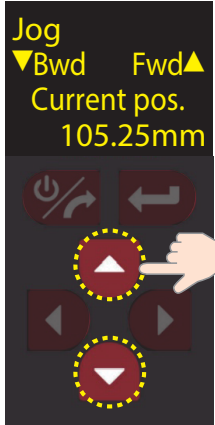


Use the up and down buttons to move the actuator forward or backward.



Setting of Forward End and Backward End

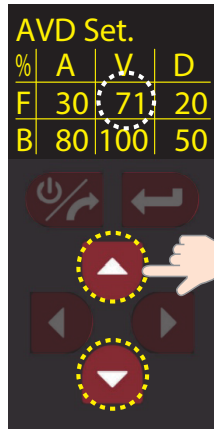
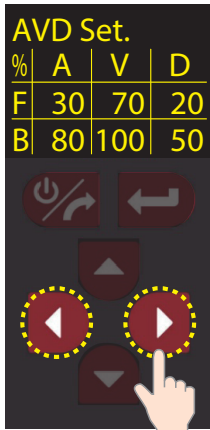
- 1 Set the position by numerical input or by a jogging operation.
(Example) [Jog operation]
Jog the actuator using the up and down buttons.
- 2 To register the position set from step 1 as the Forward End point, press the right button then press the set button.



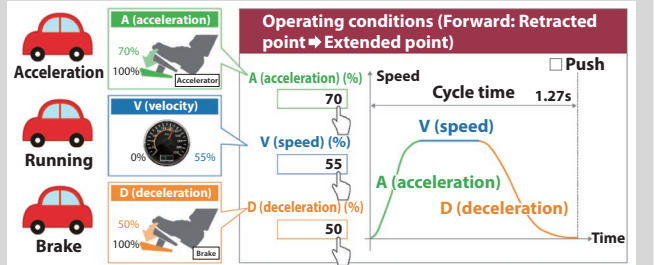
AVD settings

Set A: acceleration, V: speed, D: deceleration in %.

- 1 Select the item to be modified using the left and right buttons.
- 2 Use the up and down buttons to change the value.



What is AVD? If comparing it to driving a car,



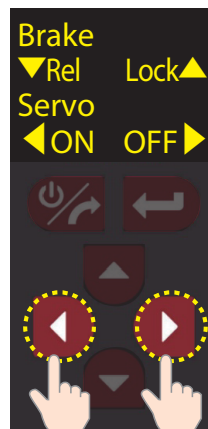
Brake release/ Servo power on/OFF



Brake lock

Brake release

Servo power ON



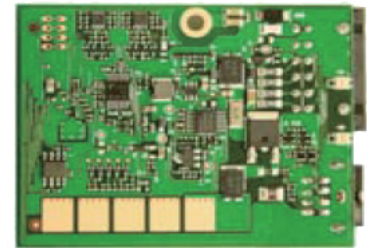
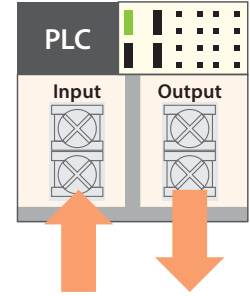
Servo power OFF

Easy to operate

ELECYLINDER Built-in Controller

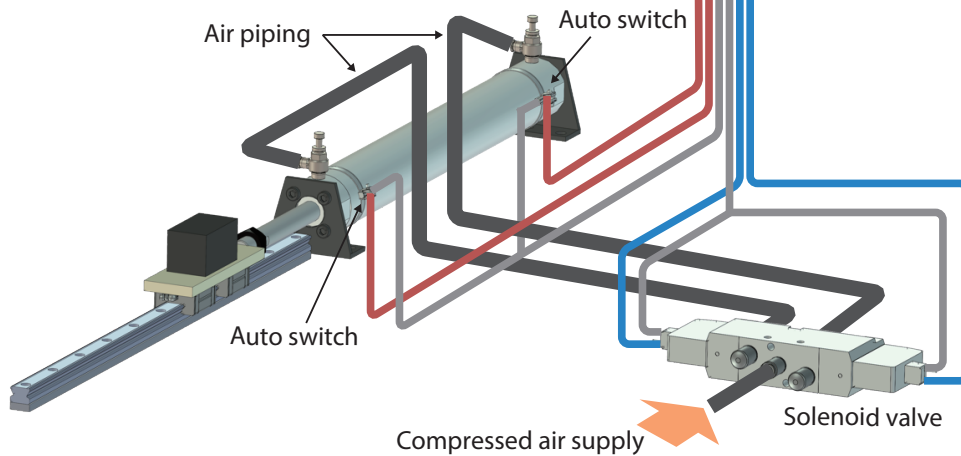
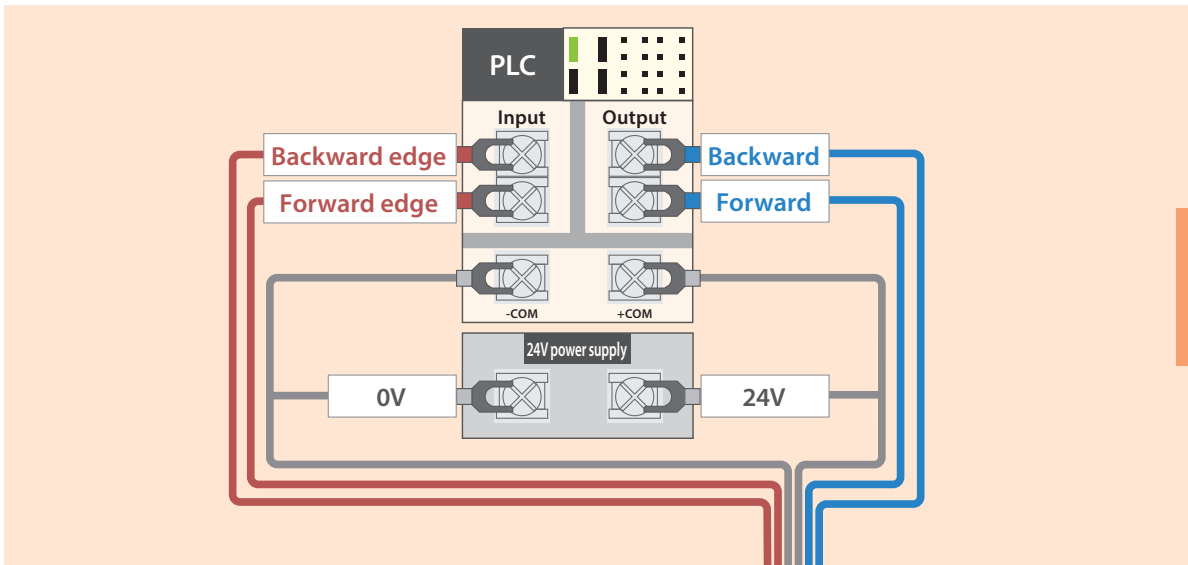


ELECYLINDER



Built-in Controller

Air cylinder wiring diagram



Controller control method

Operates with the same control signals as a double solenoid air cylinder with auto switches.

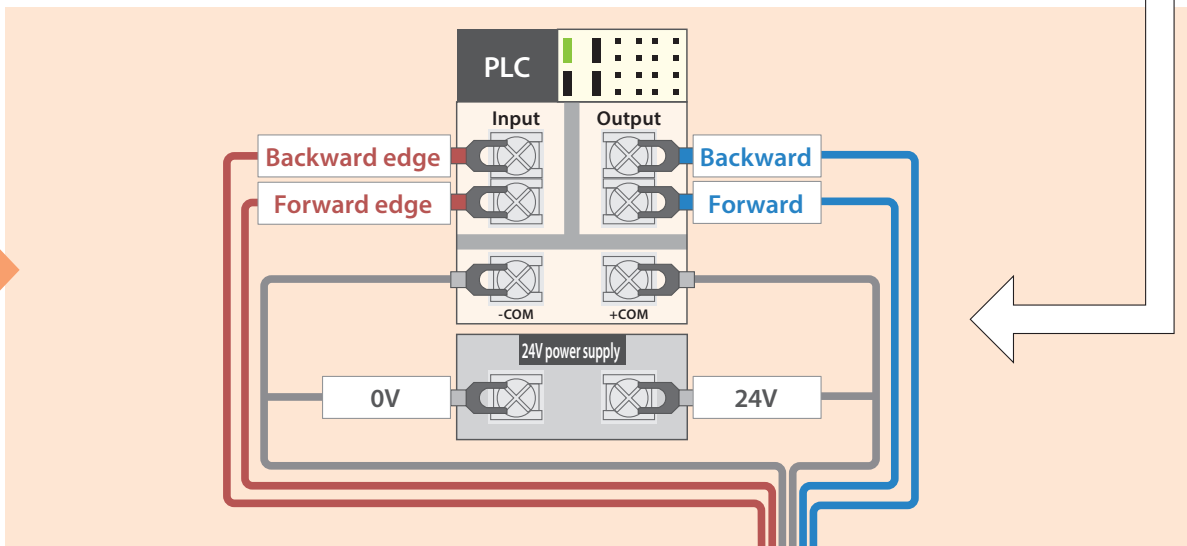
So

It can be operated using

- the same wiring
- the same PLC ladder program as the air cylinder.

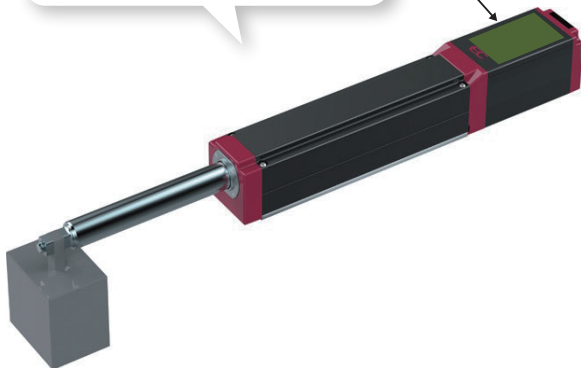


ELECYLINDER Wiring Diagram



No air piping makes cylinder simple and neat.

Built-in Controller



Field Network control is also selectable.

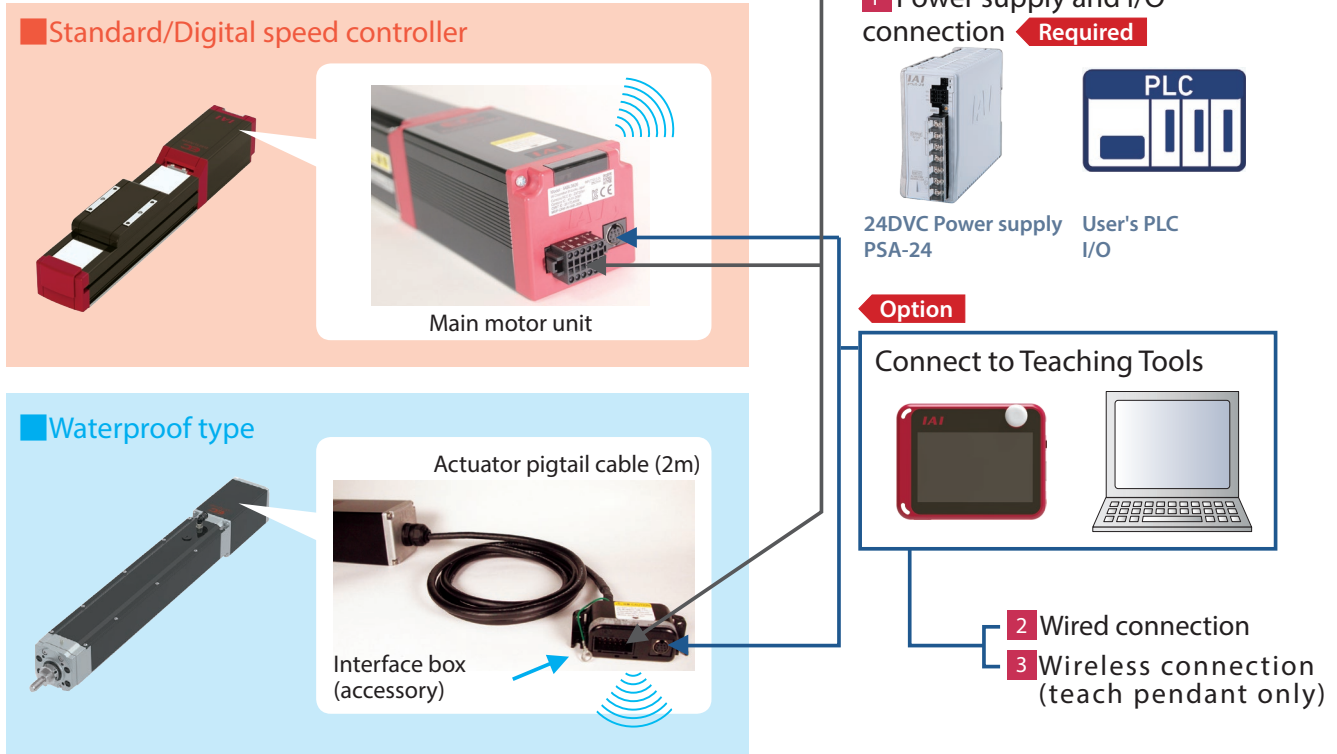


Gateway unit
"REC"
for ELECYLINDER



ELECYLINDER external connections (host PLC, power supply, teaching tool)

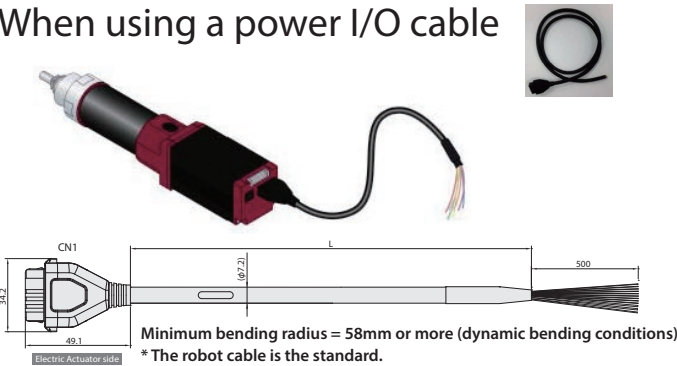
1 Requires I/O power connections and either a connection via 2 or 3



1 Power supply and I/O connection **Required**

The I/O power connector is used to connect the power supply and I / O signal lines to the host PLC. Select whether to use a power I/O cable or a terminal block to connect to the PLC.

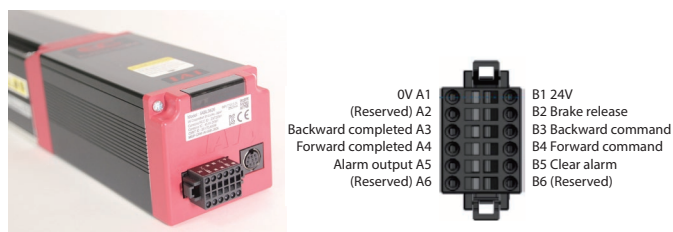
When using a power I/O cable



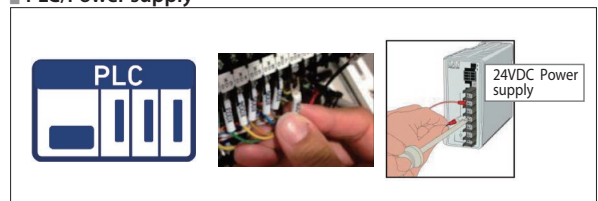
Color	Signal	Pin No.
Black(AWG18)	0V	A1
Red(AWG18)	24V	B1
Light Blue(AWG22)	(Reserved) (Note 1)	A2
Orange(AWG26)	IN0	B3
Yellow(AWG26)	IN1	B4
Green(AWG26)	IN2	B5
Pink(AWG26)	(Reserved)	B6
Blue(AWG26)	OUT0	A3
Purple(AWG26)	OUT1	A4
Gray(AWG26)	OUT2	A5
White(AWG26)	(Reserved)	A6
Brown(AWG26)	BKRLS	B2

(Note 1) When the TMD2 option (split motor and controller power) is selected, this is 24V (controller), and B1 is 24V (motor).

When using the terminal block connector



PLC/Power supply

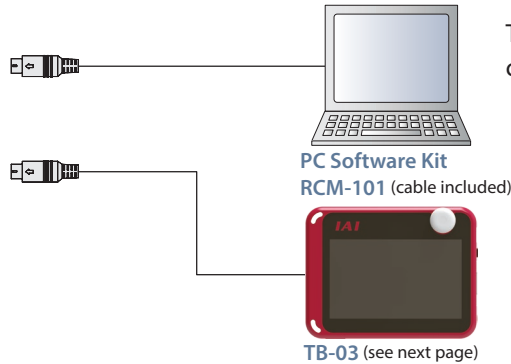


Connecting to Teaching Tools

2 Wired connection



Teaching port



TB-03 or PC-only teaching software can be connected to the teaching port.

PC Software Kit (Windows only)

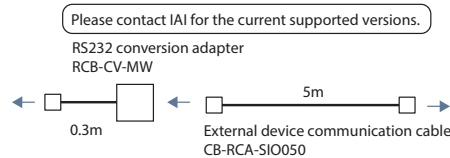
- Features** Startup support software with position input, test operation, monitor functions, etc. Enhanced functionality required for making adjustments contributes to decreasing startup time.

- Model** **RCM-101-MW** (with external device communication cable + RS232 conversion unit)

Configuration



PC Software (CD)

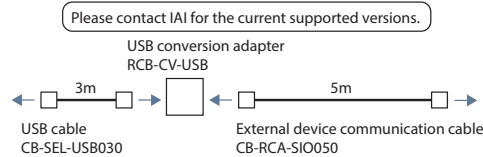


- Model** **RCM-101-USB** (with external device communication cable + USB conversion adapter + USB cable)

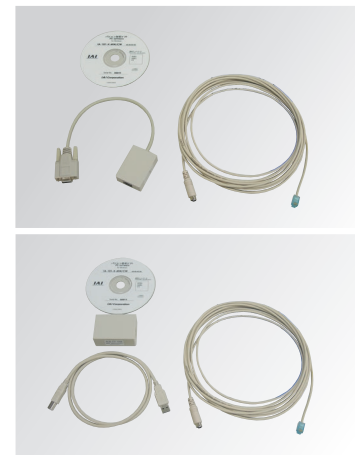
Configuration



PC Software (CD)



Supported Windows OS: 7/8/10



3 Wireless connection



TB-03 (see next page)

If you select "-WL" or "-WL2" in the ELECYLINDER model option list, you can wirelessly connect to TB-03.

Controller basic specifications

Specifications		Details
Number of controlled axes		One axis
Power supply voltage		24 VDC \pm 10%
Power capacity	Standard Waterproof High rigidity	When the power saving setting is disabled: Rated 3.5A, Maximum 4.2A. When the power saving setting is enabled Maximum 2.2A The S3/RR3 can only be used with power saving mode. Maximum current: 2.2A
	Mini type	Up to 2.0A can only be used in power saving mode
Brake release power supply		24 VDC \pm 10%, 200mA (only for external brake release)
Inrush current	Standard Waterproof High rigidity	8.3A (with inrush current limit circuit)
	Mini type	2A
Ambient operating temperature		0~40°C
Ambient operating humidity		85% RH or less (no condensation or freezing)
Operating environment		Avoid corrosive gas and excessive dust

Common for position controller/programmable controller



Features

1. Set the operating conditions through wireless connection.

Position adjustment, operating condition setting and actuator operation can be performed from outside the device without connecting to the ELECYLINDER body with a cable.

* The stop switch is enabled only for "wired connection". It becomes disabled in "wireless connection". Please keep it in mind.



ELECYLINDER that can be operated wirelessly has different wireless functions depending on what is described in the ELECYLINDER model option column. "-WL" = edit only, "-WL2" = edit + action

2. The status of up to 16 axes can be monitored, allowing the axis where the alarm occurred to be quickly found.

Receives wireless data that ELECYLINDER constantly transmits for monitoring the operation status of up to 16 axes. This makes it possible to immediately check which axis has an error when using multiple axes.

Status monitor screen

Select	EC2 S/N A70761788 Selectable	Servo Cur. pos. 0.00 mm	Travel Cnt. Travel Dist. Over load Lv.	52 1 m 12 %	Alarm Group Warnin Maintenance warning 1
--------	------------------------------------	-------------------------------	--	-------------------	--

Name of axis display
Can be set (changed) arbitrarily according to the customer's application.

Status monitor
The status of the shaft can be checked, which is helpful in checking the maintenance time.

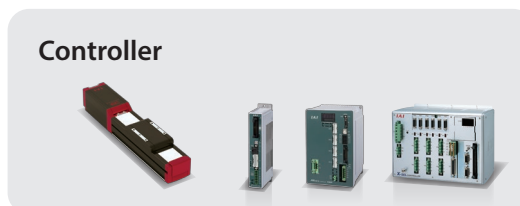
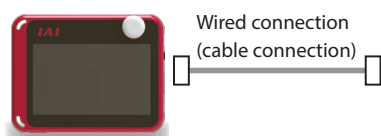
● Error status monitor
Displayed when an alarm or warning has occurred.
Corresponds to troubleshooting.

Troubleshooting screen

3. Compatible with ELECYLINDER / Position Controller / Program Controller

Can be connected to all controllers* with dedicated cables. Can perform the same functions and operations as the conventional teaching pendant TB-02.

* All controllers listed in the general catalog in 2018 or later



The ELECYLINDER can use wired or wireless connection depending on the model selection.

Model

One TB-03 teaching pendant can support all controllers*, but the cables for connecting to each controller must be selected according to the connected controller. In addition, the AC adapter for charging the main body must be selected according to your environment.

Model number **TB-03** - Cable - AC adapter

* All controllers listed in the general catalog in 2018 or later

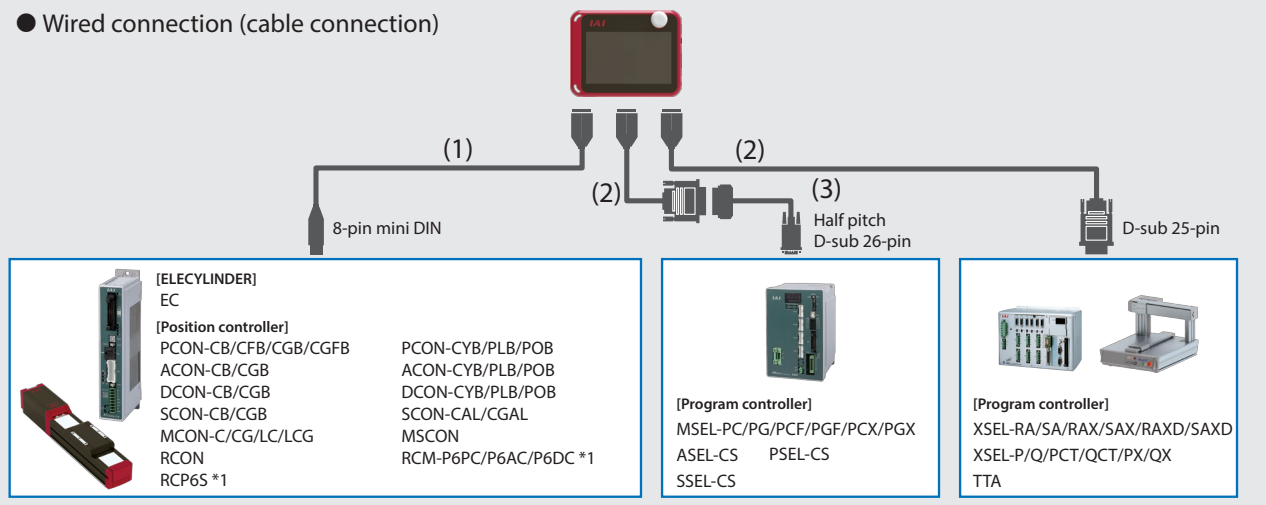
● Body + cable + AC adapter set model

Connection controller	Model number		Cable	
	Body + cable	AC adapter	ELECYLINDER / For position controller	For program controller
ELECYLINDER Position controller	TB-03-C	(No symbol) /C/E/K	(1) CB-TB3-C050	-
		N *2		
Program controller	TB-03-S	(No symbol) /C/E/K	-	(2) CB-TB3-S050
		N *2		(3) CB-SEL-SJS002
ELECYLINDER Position controller Program controller	TB-03-SC	(No symbol) /C/E/K	(1) CB-TB3-C050	(2) CB-TB3-S050
		N *2		(3) CB-SEL-SJS002 (conversion cable)
	TB-03-SCN *1	(No symbol) /C/E/K	-	-
		N *2		

*1 No cable

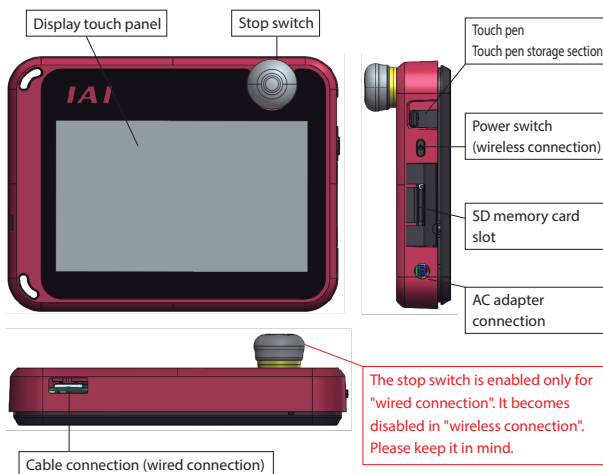
*2 No AC adapter

● Wired connection (cable connection)



*1 A gateway unit or PLC connection unit is required to operate the RCP6S and RCM-P6.

Name of each part



Options

● Strap: STR-1



● Spiral code: SIC-1



● Grip belt: GRP-2



■ Maintenance parts

Battery unit: AB-7



Notes on axis operation through wireless connection

This device (V2.30 or later) can operate the ELECYLINDER (optional model: WL2) through wireless connection. In such a case, confirm the safety as described below before using.

- When connected wirelessly, **the stop switch of this device will not work**. Prepare a device/circuit to perform emergency stop if necessary.

Slider

Max. payload	51kg
Max. stroke	500mm
Max. speed	860mm/s

Ball screw drive


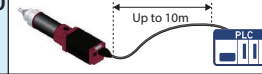

Recommended options

Battery-less Absolute



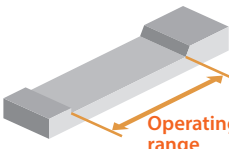
Purchased model

For models (1) ~ (3), select from the following "Maximum speed / payload table by stroke".

	EC	(1)	(2)	(3)	(4)	(5)
	Series	Type	Lead	Stroke	(4) Power / I/O cable length	(5) Options
		S3 S4 S6 S7 DS3 DS4 DS6 DS7	S H M L	50 to 500mm (per 50mm)	1 to 10 Specify the cable length in 1m increments 	B Brake WA Battery-less Absolute Encoder specification WL Wireless connection specification WL2 Wireless axis operation specification
					0 No cable With power / I/O connector 	* Please see main ELECYLINDER catalog for full options.

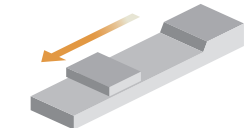
Maximum speed / payload table by stroke

Stroke



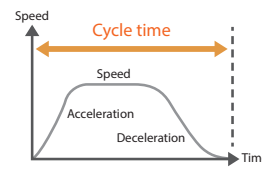
* The length of the band indicates the selectable stroke.
Example) S3H can be selected from 50 to 300mm

Max. speed (operating speed)



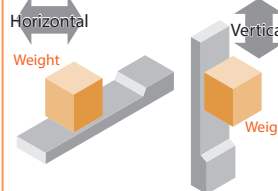
* The maximum speed varies depending on the stroke.
Example) When S3H has a stroke of 250mm, the maximum speed will be 210mm/s
* <> represents vertical operation.

Cycle time



* This is the one-way travel time when the longest stroke is operated at the horizontal mount, maximum speed and maximum acceleration/deceleration.

Payload



* The payload varies depending on the installation position.

Series	(1) Type	(2) Lead		Stroke (mm) and max. speed (mm/s)												Payload (kg)				
		Model number	mm	(3) Stroke												Horizontal	Vertical			
				25	50	100	150	200	250	300	350	400	450	500	550					
EC-	S3 / DS3	H-	6			420			300	210	150							3.5	1.5	
		M-	4			280			200	140	100							6	2.5	
		L-	2			140			100	70	50							9	3.5	
	S4 / DS4	S-	16			800				760	540								7	1.5
		H-	10			700				470	320								12	2.5
		M-	5			350				240	160								15	5
	S6 / DS6	L-	2.5			175 <150>				120	85								18	6.5
		S-	20						800			727	566						15	1
		H-	12						700			521	392	305					26	2.5
		M-	6						450			371	265	199	155				32	6
	S7 / DS7	L-	3						225			188	134	100	78				40	12.5
		S-	24							860				774	619	506			37	3
H-		16							700				631	492	395	323		46	8	
M-		8							420				322	251	200	164		51	16	
	L-	4							210 <175>				163	126	101	83		51	19	

EC-DS3

EC-DS4

EC-DS6

EC-DS7

CAD drawings can be downloaded from our website.
www.intelligentactuator.com2D
CAD3D
CAD

Recommended options

Battery-less
Absolute

Model: **WA**

Keeps location information without battery.

As it is equipped with a mechanical position detection mechanism, there is no need for the battery-powered backup of the position information.

Battery not required

Home return not required

Model: **WL/WL2**

"Easy setting" & "Trial run" using wireless connection.

The touch panel teaching pendant TB-03 can be used to eliminate the need for cable connection to the actuator. The alarm information can be confirmed immediately when trouble occurs.

See
P.14 for
details

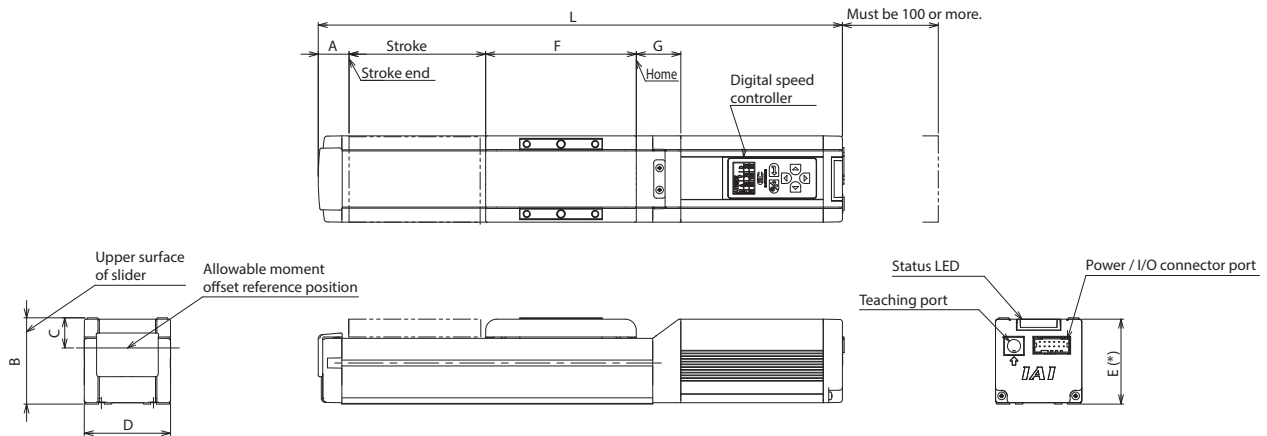
Shortened adjustment time

Cable not required

Dimensions

Refer to the homepage for dimensions related to installation.

(*) For ELECYLINDER with digital speed controller, the E dimension is +10mm.



		Stroke	50	100	150	200	250	300	350	400	450	500
S3□	L	Incremental	Without brake	268	318	368	418	468	518			
			With brake	293	343	393	443	493	543			
		Battery-less Absolute	Without brake	293	343	393	443	493	543			
			With brake	313	363	413	463	513	563			
		A				14.5						
		B				45						
		C				16						
		D				35						
	E (*)				66							
	F				64							
	G				14.5							
S4□	L	Incremental	Without brake	301	351	401	451	501	551			
			With brake	331	381	431	481	531	581			
		Battery-less Absolute	Without brake	316	366	416	466	516	566			
			With brake	346	396	446	496	546	596			
		A				18						
		B				56						
		C				18						
		D				44						
	E (*)				63							
	F				82							
	G				16							
S6□	L	Without brake	333	383	433	483	533	583	633	683		
		With brake	373	423	473	523	573	623	673	723		
		A				22.5						
		B				63						
		C				22						
		D				63						
		E (*)				62						
		F				110						
	G				32.5							
S7□	L	Without brake	394	444	494	544	594	644	694	744	794	844
		With brake	444	494	544	594	644	694	744	794	844	894
		A					23					
		B					73					
		C					22					
		D					73					
		E (*)					72					
		F					126					
	G					38						

High Rigidity Slider

Max. payload	51kg
Max. stroke	800mm
Max. speed	1440mm/s

Built-in 4-row guide ball screw drive

Recommended options

Battery-less Absolute



● **Purchased model** For models (1) ~ (3), select from the following "Maximum speed / payload table by stroke".

Digital speed controller

EC	-	(1)	(2)	AH-	(3)	-	(4)	-	(5)
Series	-	Type	Lead	-	Stroke	-	(4) Power / I/O cable length	-	(5) Options
		S6 S7 DS6 DS7	S H M L		50 to 800mm (per 50mm)		1 to 10 Specify the cable length in 1m increments Up to 10m 0 No cable With power / I/O connector		B Brake WA Battery-less Absolute Encoder specification WL Wireless connection specification WL2 Wireless axis operation specification

* Please see main ELECYLINDER catalog for full options.

● Maximum speed / payload table by stroke

Stroke

* The length of the band indicates the selectable stroke.
Example) S6SAH can be selected from 50 to 800mm

Max. speed (operating speed)

* The maximum speed varies depending on the stroke.
Example) When S6SAH has a stroke of 550mm, the maximum speed will be 1090mm/s
* <> represents vertical operation.

Cycle time

* This is the one-way travel time when the longest stroke is operated at the horizontal mount, maximum speed and maximum acceleration/deceleration.

Payload

* The payload varies depending on the installation position.

Series	(1) Type	(2) Lead		Stroke (mm) and max. speed (mm/s)																	Payload (kg)				
		Model number	mm	(3) Stroke																	Horizontal	Vertical			
				25	50	100	150	200	250	300	350	400	450	500	550	600	650	700	750	800					
EC-	S6□AH DS6□AH	S-	20	1440 <1280>												1280	1090	940	815	715	630	560	1.585 sec	15	1
		H-	12	900						845	705	585	515	445	390	345	315	2.666 sec	26	2.5					
		M-	6	450				415	350	295	255	220	190	170	140	5.809 sec	32	6							
		L-	3	225		205	170	145	125	110	95	85	70	11.501 sec	40	16									
	S7□AH DS7□AH	S-	24	1230										1080	950	840	750	1.245 sec	37	3					
		H-	16	980 <840>					955 <840>	820	715	625	555	495	1.765 sec	46	8								
		M-	8	420				405	350	310	275	245	3.381 sec	51	16										
		L-	4	210 <175>		195 <175>	175	150	135	120	6.757 sec	51	25												



CAD drawings can be downloaded from our website.
www.intelligentactuator.com



Recommended options



Model: **WA**

Keeps location information without battery.

As it is equipped with a mechanical position detection mechanism, there is no need for the battery-powered backup of the position information.

Battery not required

Home return not required



Model: **WL/WL2**

"Easy setting" & "Trial run" using wireless connection.

The touch panel teaching pendant TB-03 can be used to eliminate the need for cable connection to the actuator. The alarm information can be confirmed immediately when trouble occurs.

See **P.14** for details

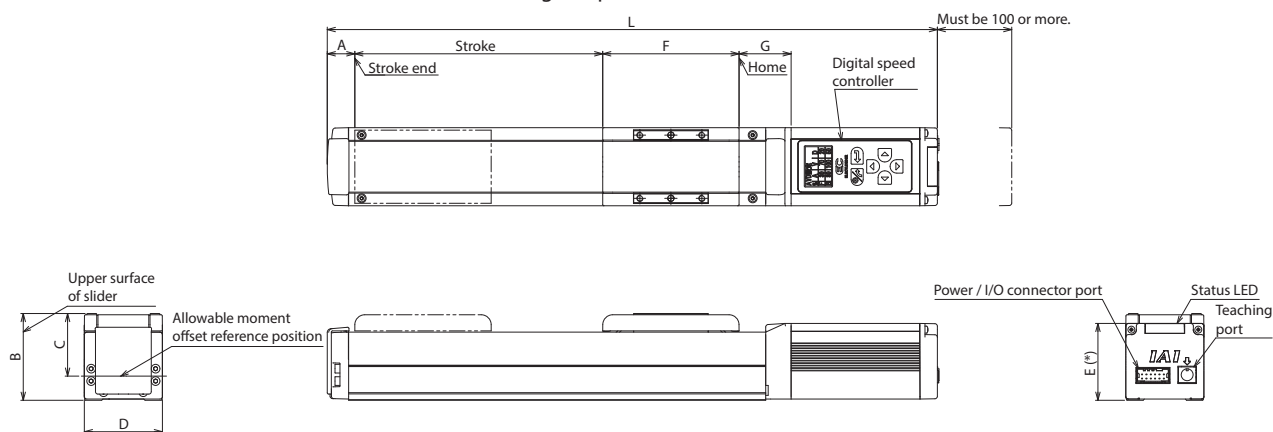
Shortened adjustment time

Cable not required

Dimensions

Refer to the homepage for dimensions related to installation.

(*) For ELECYLINDER with digital speed controller, the E dimension is +10mm.



	Stroke	50	100	150	200	250	300	350	400	450	500	550	600	650	700	750	800	
		L	Without brake	342.5	392.5	442.5	492.5	542.5	592.5	642.5	692.5	742.5	792.5	842.5	892.5	942.5	992.5	1042.5
	With brake	382.5	432.5	482.5	532.5	582.5	632.5	682.5	732.5	782.5	832.5	882.5	932.5	982.5	1032.5	1082.5	1132.5	
S6□AH	A	22.5																
	B	70																
	C	50.5																
	D	63																
	E (*)	62																
	F	110																
	G	42																
S7□AH	L	Without brake	407.5	457.5	507.5	557.5	607.5	657.5	707.5	757.5	807.5	857.5	907.5	957.5	1007.5	1057.5	1107.5	1157.5
		With brake	457.5	507.5	557.5	607.5	657.5	707.5	757.5	807.5	857.5	907.5	957.5	1007.5	1057.5	1107.5	1157.5	1207.5
	A	22.5																
	B	80																
	C	58																
	D	75																
	E (*)	76																
	F	126																
	G	52																

Slider

Max. payload	20kg
Max. stroke	2600mm
Max. speed	1600mm/s

Belt Driven

Recommended options

Battery-less Absolute



Purchased model

For models (1) ~ (3), select from the following "Maximum speed / payload table by stroke".

EC	-	(1)	-	(2)	-	(3)	-	(4)	-	(5)
Series	-	Type	-	Lead	-	Stroke	-	(4) Power / I/O cable length	-	(5) Options
		B6 B7		S		300 to 2600mm (per 100mm)		1 to 10 Specify the cable length in 1m increments 0 No cable With power / I/O connector		B Brake WA Battery-less Absolute Encoder specification WL Wireless connection specification WL2 Wireless axis operation specification

* Please see main ELECYLINDER catalog for full options.

Maximum speed / payload table by stroke

Stroke

* The length of the band indicates the selectable stroke.
Example) B6S can be selected from 300 to 2600mm

Max. speed (operating speed)

* The maximum speed varies depending on the stroke.
Example) When B6S has a stroke of 800mm, the maximum speed will be 1440mm/s
* <> represents vertical operation.

Cycle time

* This is the one-way travel time when the longest stroke is operated at the horizontal mount, maximum speed and maximum acceleration/deceleration.

Payload

* The payload varies depending on the installation position.

Series	(1) Type	(2) Lead		Stroke (mm) and max. speed (mm/s)																							Payload (kg)				
		Model number	mm	(3) Stroke																							Horizontal	Vertical			
EC-	B6	S-	48 or equivalent	200	300	400	500	600	700	800	900	1000	1100	1200	1300	1400	1500	1600	1700	1800	1900	2000	2100	2200	2300	2400	2500	2600	2.55 sec	11	-
	B7	S-	48 or equivalent	200	300	400	500	600	700	800	900	1000	1100	1200	1300	1400	1500	1600	1700	1800	1900	2000	2100	2200	2300	2400	2500	2600	2.455 sec	20	-

EC-B6

EC-B7

CAD drawings can be downloaded from our website.
www.intelligentactuator.com

2D CAD

3D CAD

Recommended options

Battery-less Absolute

Model: **WA**

Keeps location information without battery.

As it is equipped with a mechanical position detection mechanism, there is no need for the battery-powered backup of the position information.

Battery not required

Home return not required



Model: **WL/WL2**

"Easy setting" & "Trial run" using wireless connection.

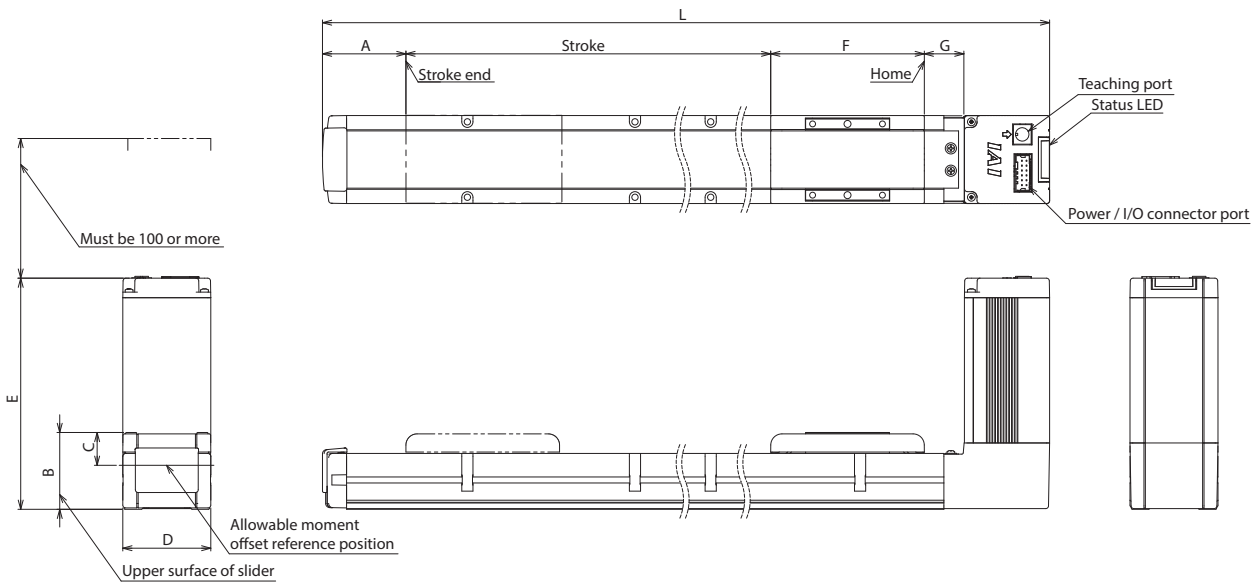
The touch panel teaching pendant TB-03 can be used to eliminate the need for cable connection to the actuator. The alarm information can be confirmed immediately when trouble occurs.

See **P.14** for details

Shortened adjustment time

Cable not required

Dimensions Refer to the homepage for dimensions related to installation.



	Stroke	300	400	500	600	700	800	900	1000	1100	1200	1300	1400	1500	1600	1700	1800	1900	2000	2100	2200	2300	2400	2500	2600	
B6	L	559.5	659.5	759.5	859.5	959.5	1059.5	1159.5	1259.5	1359.5	1459.5	1559.5	1659.5	1759.5	1859.5	1959.5	2059.5	2159.5	2259.5	2359.5	2459.5	2559.5	2659.5	2759.5	2859.5	
	A												59.8													
	B												55													
	C												23.5													
	D												63													
	E	Without brake												165.5												
		With brake												205.5												
		F												110												
	G												28.7													
B7	L	587.5	687.5	787.5	887.5	987.5	1087.5	1187.5	1287.5	1387.5	1487.5	1587.5	1687.5	1787.5	1887.5	1987.5	2087.5	2187.5	2287.5	2387.5	2487.5	2587.5	2687.5	2787.5	2887.5	
	A												60.8													
	B												55													
	C												23.5													
	D												73													
	E	Without brake												204.5												
		With brake												254.5												
		F												126												
	G												29.7													

Slider <motor side-mounted>

Max. payload	51kg
Max. stroke	300mm
Max. speed	860mm/s


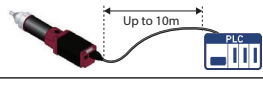

Ball screw drive

Recommended options

Battery-less Absolute



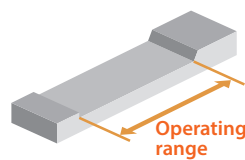
Purchased model For models (1) ~ (3), select from the following "Maximum speed / payload table by stroke".

EC	(1)	(2)	R-	(3)	(4)	(5)
Series	Type	Lead		Stroke	(4) Power / I/O cable length	(5) Options
	S3 S4 S6 S7 DS3 DS4 DS6 DS7	S H M L		50 to 500mm (per 50mm)	1 to 10 Specify the cable length in 1m increments  Up to 10m 0 No cable With power / I/O connector 	B Brake WA Battery-less Absolute Encoder specification WL Wireless connection specification WL2 Wireless axis operation specification

* Please see main ELECYLINDER catalog for full options.

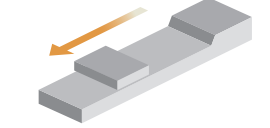
Maximum speed / payload table by stroke

Stroke



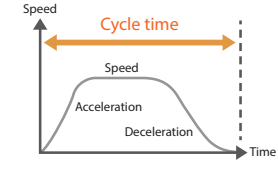
* The length of the band indicates the selectable stroke.
Example) S3H can be selected from 50 to 300mm

Max. speed (operating speed)



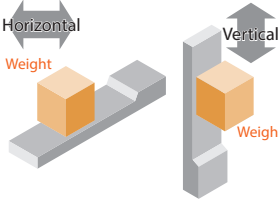
* The maximum speed varies depending on the stroke.
Example) When S3H has a stroke of 250mm, the maximum speed will be 210mm/s
* <> represents vertical operation.

Cycle time



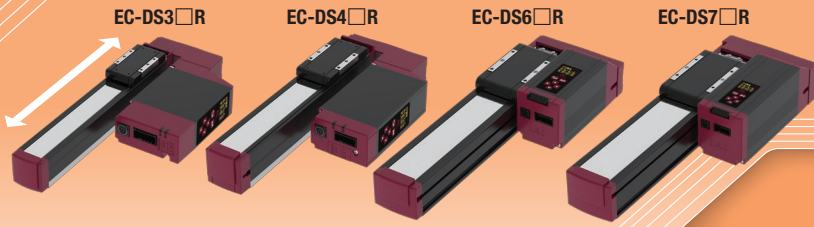
* This is the one-way travel time when the longest stroke is operated at the horizontal mount, maximum speed and maximum acceleration/deceleration.

Payload



* The payload varies depending on the installation position.

Series	(1) Type	(2) Lead		Stroke (mm) and max. speed (mm/s)											Payload (kg)					
		Model number	mm	(3) Stroke											Horizontal	Vertical				
				25	50	100	150	200	250	300	350	400	450	500						
EC-	S3 / DS3	H-	6			360		300	210	150								3.5	1.5	
		M-	4		240		200	140	100									6	2.5	
		L-	2		120		100	70	50									9	3.5	
	S4 / DS4	S-	16			800			760	540									7	1.5
		H-	10			700	<600>		470	320									12	2.5
		M-	5			350			240	160									15	5
		L-	2.5			175	<150>			120	85								18	6.5
	S6 / DS6	S-	20					800			727	566							15	1
		H-	12					700			521	392	305						26	2.5
		M-	6					450	<400>		371	265	199	155					32	6
		L-	3					225			188	134	100	78					40	12.5
	S7 / DS7	S-	24					860				774	619	506					37	3
		H-	16					700				631	492	395	323				46	8
		M-	8					420	<350>			322	251	200	164				51	16
		L-	4					190	<175>				163	126	101	83			51	19



CAD drawings can be downloaded from our website.
www.intelligentactuator.com



Recommended options

Model: **WA**



Keeps location information without battery.

As it is equipped with a mechanical position detection mechanism, there is no need for the battery-powered backup of the position information.

Battery not required

Home return not required



Model: **WL/WL2**

"Easy setting" & "Trial run" using wireless connection.

The touch panel teaching pendant TB-03 can be used to eliminate the need for cable connection to the actuator. The alarm information can be confirmed immediately when trouble occurs.

See **P.14** for details

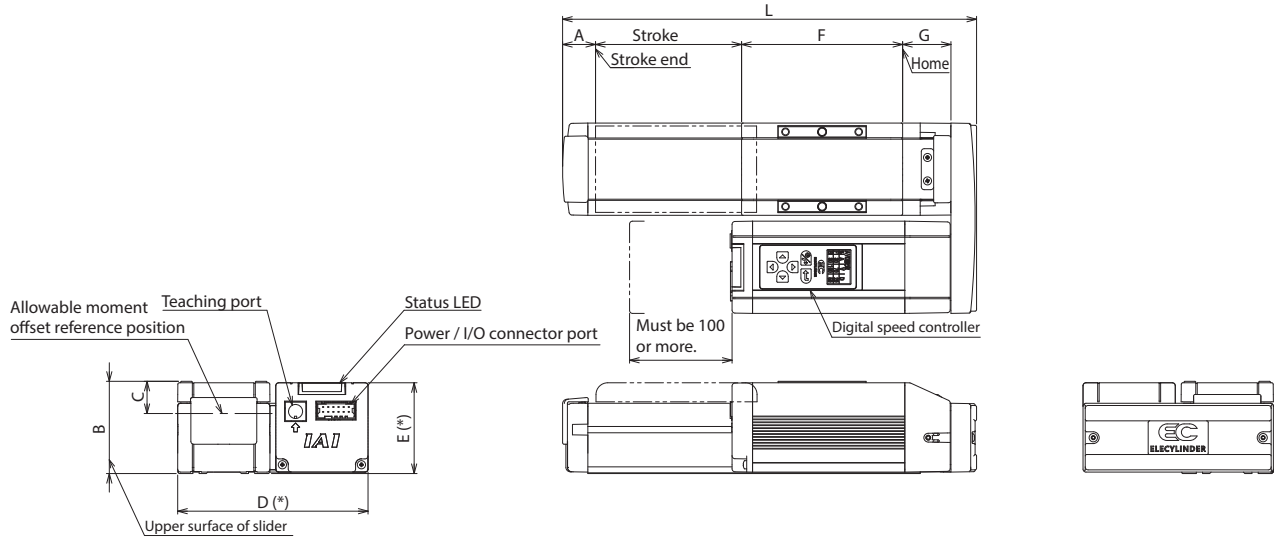
Shortened adjustment time

Cable not required

Dimensions

Refer to the homepage for dimensions related to installation.

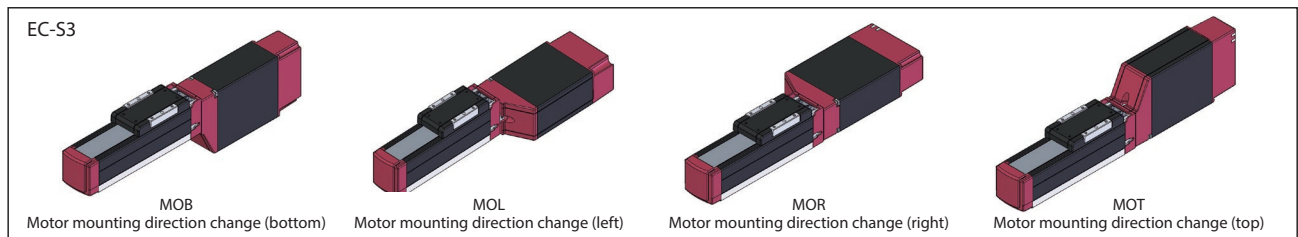
(*) For ELECYLINDER with digital speed controller, the D dimension is +10mm for DS3□R/DS4□R, and E dimension is +10mm for DS6□R/DS7□R.



	Stroke	50	100	150	200	250	300
S3□R	L	170	220	270	320	370	420
	A			14.5			
	B			45			
	C			16			
	D(*)			109.5			
	E			35			
	F			64			
S4□R	L	188	238	288	338	388	438
	A			18			
	B			56			
	C			18			
	D(*)			117			
	E			43			
	F			82			
G			16				

	Stroke	50	100	150	200	250	300	350	400	450	500
S6□R	L	233	283	333	383	433	483	533	583		
	A					22.5					
	B					63					
	C					22					
	D					130					
	E(*)					62					
	F					110					
S7□R	L	265.5	315.5	365.5	415.5	465.5	515.5	565.5	615.5	665.5	715.5
	A					23					
	B					73					
	C					22					
	D					151					
	E(*)					72					
	F					126					
G					43.5						

For more mounting options, please see page 16.



High Rigidity Slider <motor side-mounted>

Max. payload	51kg
Max. stroke	800mm
Max. speed	1120mm/s

Built-in 4-row guide ball screw drive

Recommended options

Battery-less Absolute



● **Purchased model** For models (1) ~ (3), select from the following "Maximum speed / payload table by stroke".

EC	-	(1)	(2)	AHR-	(3)	-	(4)	-	(5)
Series	-	Type	Lead	-	Stroke	-	(4) Power / I/O cable length	-	(5) Options
		S6	S		50 to 800mm (per 50mm)		1 to 10 Specify the cable length in 1m increments 		B Brake WA Battery-less Absolute Encoder specification WL Wireless connection specification WL2 Wireless axis operation specification
		S7	H					0 No cable With power / I/O connector 	
		DS6	M						
		DS7	L						

* Please see main ELECYLINDER catalog for full options.

● Maximum speed / payload table by stroke

Stroke

* The length of the band indicates the selectable stroke.
Example) S6SAHR can be selected from 50 to 800mm

Max. speed (operating speed)

* The maximum speed varies depending on the stroke.
Example) When S6SAHR has a stroke of 550mm, the maximum speed will be 1090mm/s
* <> represents vertical operation.

Cycle time

* This is the one-way travel time when the longest stroke is operated at the horizontal mount, maximum speed and maximum acceleration/deceleration.

Payload

* The payload varies depending on the installation position.

Series	(1) Type	(2) Lead		Stroke (mm) and max. speed (mm/s)																	Payload (kg)				
		Model number	mm	(3) Stroke																	Horizontal	Vertical			
				25	50	100	150	200	250	300	350	400	450	500	550	600	650	700	750	800					
EC-	S6 / DS6	S-	20	1120											1090	940	815	715	630	560	1.585 sec	15	1		
		H-	12	900 <800>											845 <800>	705	585	515	445	390	345	315	2.666 sec	26	2.5
		M-	6	450 <400>											415 <400>	350	295	255	220	190	170	140	5.83 sec	32	6
		L-	3	225											205	170	145	125	110	95	85	70	11.511 sec	40	16
	S7 / DS7	S-	24	1080 <860>											950					840	750	1.245 sec	37	3	
		H-	16	840 <700>											820 <700>	715 <700>	625	555	495	1.765 sec	46	8			
		M-	8	420 <350>											405 <350>	350	310	275	245	3.381 sec	51	16			
		L-	4	190 <175>											175					150	135	120	6.757 sec	51	25

EC-DS6□AHR



EC-DS7□AHR



CAD drawings can be downloaded from our website.
www.intelligentactuator.com



Recommended options

Battery-less Absolute

Model: **WA**

Keeps location information without battery.

As it is equipped with a mechanical position detection mechanism, there is no need for the battery-powered backup of the position information.

Battery not required

Home return not required



Model: **WL/WL2**

"Easy setting" & "Trial run" using wireless connection.

The touch panel teaching pendant TB-03 can be used to eliminate the need for cable connection to the actuator. The alarm information can be confirmed immediately when trouble occurs.

See **P.14** for details

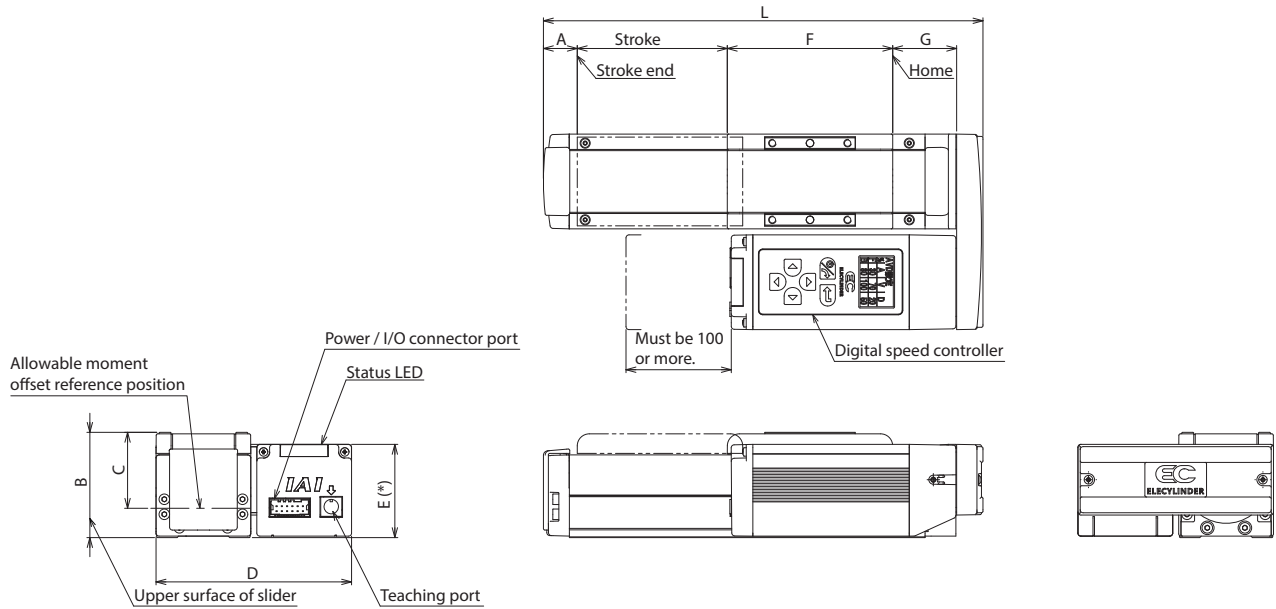
Shortened adjustment time

Cable not required

Dimensions

Refer to the homepage for dimensions related to installation.

(*) For ELECYLINDER with digital speed controller, the E dimension is +10mm.



	Stroke	50	100	150	200	250	300	350	400	450	500	550	600	650	700	750	800
S6□AHR	L	242.5	292.5	342.5	392.5	442.5	492.5	542.5	592.5	642.5	692.5	742.5	792.5	842.5	892.5	942.5	992.5
	A									22.5							
	B									70							
	C									50.5							
	D									130							
	E (*)									62							
	F									110							
G									42.5								
S7□AHR	L	274	324	374	424	474	524	574	624	674	724	774	824	874	924	974	1024
	A									22.5							
	B									80							
	C									58							
	D									152							
	E (*)									76							
	F									126							
G									52.5								

Rod

Max. payload	80kg
Max. stroke	300mm
Max. speed	860mm/s

Ball screw drive

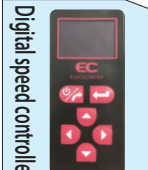
Recommended options

Battery-less Absolute

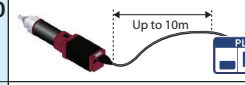


Purchased model

For models (1) ~ (3), select from the following "Maximum speed / payload table by stroke".



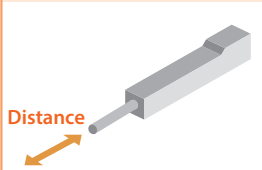
Digital speed controller

EC	-	(1)	-	(2)	-	(3)	-	(4)	-	(5)								
Series	-	Type	-	Lead	-	Stroke	-	(4) Power / I/O cable length	-	(5) Options								
	-	R6 R7 DR6 DR7	-	S H M L	-	50 to 300mm (per 50mm)	-	<div style="display: flex; align-items: center;"> <div style="border: 1px solid black; padding: 2px;">1 to 10</div> <div style="margin: 0 5px;">-</div> <div style="text-align: center;">Specify the cable length in 1m increments</div> </div> 	-	<table border="1" style="border-collapse: collapse; width: 100%;"> <tr> <td style="text-align: center;">B</td> <td>Brake</td> </tr> <tr> <td style="text-align: center;">WA</td> <td>Battery-less Absolute Encoder specification</td> </tr> <tr> <td style="text-align: center;">WL</td> <td>Wireless connection specification</td> </tr> <tr> <td style="text-align: center;">WL2</td> <td>Wireless axis operation specification</td> </tr> </table>	B	Brake	WA	Battery-less Absolute Encoder specification	WL	Wireless connection specification	WL2	Wireless axis operation specification
B	Brake																	
WA	Battery-less Absolute Encoder specification																	
WL	Wireless connection specification																	
WL2	Wireless axis operation specification																	

* Please see main ELECYLINDER catalog for full options.

Maximum speed / payload table by stroke

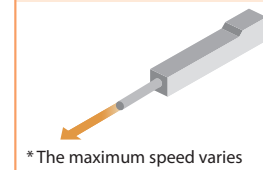
Stroke



Distance

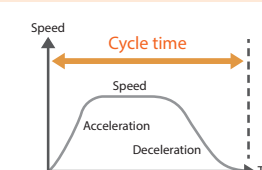
* The length of the band indicates the selectable stroke.
Example) R6S can be selected from 50 to 300mm

Max. speed (operating speed)



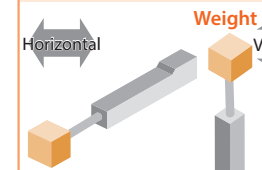
* The maximum speed varies depending on the stroke.
Example) When R6S has a stroke of 150mm, the maximum speed will be 800mm/s
* <> represents vertical operation.

Cycle time



* This is the one-way travel time when the longest stroke is operated at the horizontal mount, maximum speed and maximum acceleration/deceleration.

Payload



* The payload varies depending on the installation position.

Series	(1) Type	(2) Lead		Stroke (mm) and max. speed (mm/s)							Payload (kg)		
		Model number	mm	(3) Stroke							Horizontal	Vertical	
				25	50	100	150	200	250	300			
EC-	R6 / DR6	S-	20	800							0.635 sec	6	1.5
		H-	12	700					547	0.75 sec	25	4	
		M-	6	450			376	268	1.239 sec	40	10		
		L-	3	225		186	133	2.35 sec	60	12.5			
	R7 / DR7	S-	24	860 <640>							0.585 sec	20	3
		H-	16	700 <560>						0.693 sec	50	8	
		M-	8	350					0.999 sec	60	18		
		L-	4	175					1.844 sec	80	19		

EC-DR6

EC-DR7

CAD drawings can be downloaded from our website.
www.intelligentactuator.com

2D
CAD

3D
CAD

Recommended options

Battery-less
Absolute

Model: **WA**

Keeps location information without battery.

As it is equipped with a mechanical position detection mechanism, there is no need for the battery-powered backup of the position information.

Battery not required

Home return not required



Model: **WL/WL2**

"Easy setting" & "Trial run" using wireless connection.

The touch panel teaching pendant TB-03 can be used to eliminate the need for cable connection to the actuator. The alarm information can be confirmed immediately when trouble occurs.

See
P.14 for
details

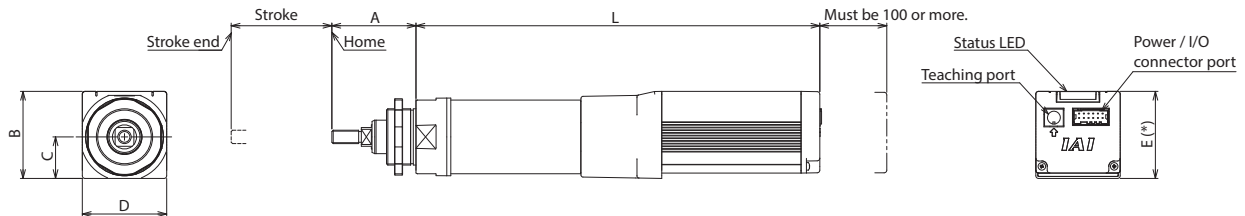
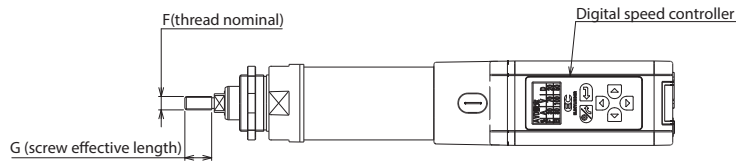
Shortened adjustment time

Cable not required

Dimensions

Refer to the homepage for dimensions related to installation.

(*) For ELECYLINDER with digital speed controller, the E dimension is +10mm.



		Stroke	50	100	150	200	250	300
R6□	L	Without brake	301.5	351.5	401.5	451.5	501.5	551.5
		With brake	341.5	391.5	441.5	491.5	541.5	591.5
		A				62.8		
		B				65		
		C				31		
		D				63		
		E (*)				65		
		F				M10×1.25		
	G				20			
R7□	L	Without brake	354	404	454	504	554	604
		With brake	404	454	504	554	604	654
		A				76.4		
		B				74.5		
		C				34.5		
		D				73		
		E (*)				74.5		
		F				M14×1.5		
	G				27.5			

Radial Cylinder

Max. payload	80kg
Max. stroke	315mm
Max. speed	860mm/s

Built-in 2-row guide ball screw drive

Recommended options

Battery-less Absolute



Purchased model

For models (1) ~ (3), select from the following "Maximum speed / payload table by stroke".

EC	(1)	(2)	(3)	(4)	(5)
Series	Type	Lead	Stroke	(4) Power / I/O cable length	(5) Options
Digital speed controller 	RR3 RR4 RR6 RR7	S H M L	50 to 300mm 65 to 315mm (per 50mm)	1 to 10 Specify the cable length in 1m increments 	B Brake WA Battery-less Absolute Encoder specification WL Wireless connection specification WL2 Wireless axis operation specification
	DRR3 DRR4 DRR6 DRR7			0 No cable With power / I/O connector	

* Please see main ELECYLINDER catalog for full options.

Maximum speed / payload table by stroke

Stroke

Distance

* The length of the band indicates the selectable stroke.
Example) RR3H can be selected from 50 to 300mm

Max. speed (operating speed)

* The maximum speed varies depending on the stroke.
Example) When RR3H has a stroke of 250mm, the maximum speed will be 210mm/s
* <> represents vertical operation.

Cycle time

* This is the one-way travel time when the longest stroke is operated at the horizontal mount, maximum speed and maximum acceleration/deceleration.

Payload

Horizontal Weight
Vertical Weight

* The payload varies depending on the installation position.

Series	(1) Type	(2) Lead		Stroke (mm) and max. speed (mm/s)							Payload (kg)	
		Model number	mm	(3) Stroke							Horizontal	Vertical
				25	50	100	150	200	250	300		
EC-	RR3 / DRR3	H-	6	420	300	210	150	2.107 sec	9	1.5		
		M-	4	280	200	140	100	3.099 sec	14	2.5		
		L-	2	140	100	70	50	6.072 sec	18	3.5		
	RR4 / DRR4	S-	16	800	600	440	0.825 sec	7	1.5			
		H-	10	700	570	390	290	1.158 sec	16	2.5		
		M-	5	350	280	190	140	2.247 sec	25	5		
		L-	2.5	175 <150>	135	90	70	4.369 sec	35	6.5		
				25	65	115	165	215	265	315		
	RR6 / DRR6	S-	20	800	0.642 sec	6	1.5					
		H-	12	700	660	480	0.804 sec	25	4			
		M-	6	450	325	235	1.455 sec	40	10			
		L-	3	225	160	115	2.829 sec	60	12.5			
RR7 / DRR7	S-	24	860 <640>	0.604 sec	20	3						
	H-	16	700 <560>	0.72 sec	50	8						
	M-	8	350	1.041 sec	60	18						
	L-	4	175	1.929 sec	80	19						



CAD drawings can be downloaded from our website.
www.intelligentactuator.com

2D CAD

3D CAD

Recommended options

Battery-less Absolute

Model: WA

Keeps location information without battery.

As it is equipped with a mechanical position detection mechanism, there is no need for the battery-powered backup of the position information.

Battery not required

Home return not required



Model: WL/WL2

"Easy setting" & "Trial run" using wireless connection.

The touch panel teaching pendant TB-03 can be used to eliminate the need for cable connection to the actuator. The alarm information can be confirmed immediately when trouble occurs.

See P.14 for details

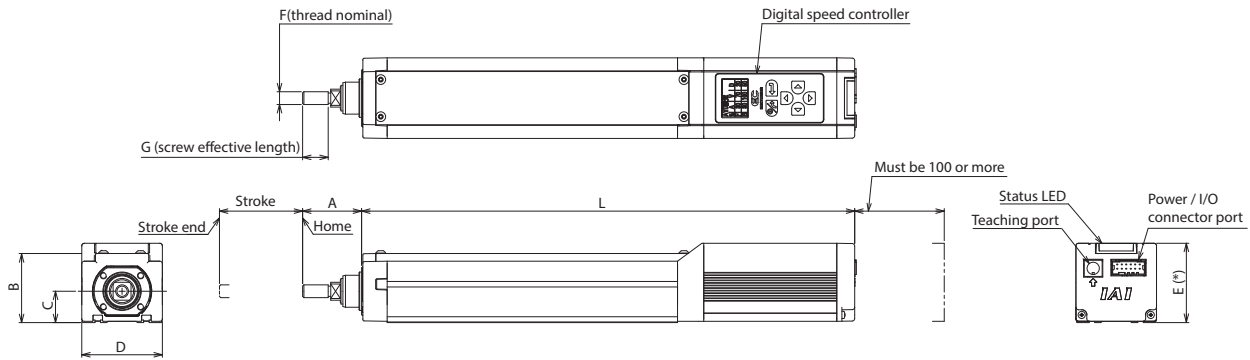
Shortened adjustment time

Cable not required

Dimensions

Refer to the homepage for dimensions related to installation.

(*) For ELECYLINDER with digital speed controller, the E dimension is +10mm.



		Stroke	50	100	150	200	250	300	
RR3□	L	Incremental	Without brake	265	315	365	415	465	515
			With brake	290	340	390	440	490	540
		Battery-less Absolute	Without brake	290	340	390	440	490	540
			With brake	310	360	410	460	510	560
	A		29.5						
	B		38.5						
	C		18						
	D		35						
	E (*)		66						
	F		M8×1.25						
G		12							
RR4□	L	Incremental	Without brake	299	349	399	449	499	549
			With brake	329	379	429	479	529	579
		Battery-less Absolute	Without brake	314	364	414	464	514	564
			With brake	344	394	444	494	544	594
	A		46						
	B		50						
	C		22						
	D		44						
	E (*)		63						
	F		M10×1.25						
G		20							
RR6□	L	Without brake	335.5	385.5	435.5	485.5	535.5	585.5	
		With brake	375.5	425.5	475.5	525.5	575.5	625.5	
	A		46						
	B		54						
	C		24.5						
	D		63						
	E (*)		62						
	F		M10×1.25						
	G		20						
	RR7□	L	Without brake	404	454	504	554	604	654
With brake			454	504	554	604	654	704	
A		63.5							
B		64							
C		32							
D		73							
E (*)		72							
F		M14×1.5							
G		27.5							

High Rigidity Radial Cylinder

Max. payload	80kg
Max. stroke	500mm
Max. speed	860mm/s

Built-in 4-row guide ball screw drive

Recommended options

Battery-less Absolute



● **Purchased model** For models (1) ~ (3), select from the following "Maximum speed / payload table by stroke".

Digital speed controller

EC	-	(1)	(2)	AH-	(3)	(4)	(5)								
Series	-	Type	Lead	-	Stroke	(4) Power / I/O cable length	(5) Options								
		RR6 RR7 DRR6 DRR7	S H M L		50 to 500mm (per 50mm)	<div style="display: flex; align-items: center;"> <div style="border: 1px solid black; padding: 2px;">1 to 10</div> <div style="margin: 0 10px;">-</div> <div style="text-align: center;"> <p>Specify the cable length in 1m increments</p> </div> </div>	<table border="1" style="width: 100%; border-collapse: collapse;"> <tr> <td style="width: 20px;">B</td> <td>Brake</td> </tr> <tr> <td>WA</td> <td>Battery-less Absolute Encoder specification</td> </tr> <tr> <td>WL</td> <td>Wireless connection specification</td> </tr> <tr> <td>WL2</td> <td>Wireless axis operation specification</td> </tr> </table>	B	Brake	WA	Battery-less Absolute Encoder specification	WL	Wireless connection specification	WL2	Wireless axis operation specification
B	Brake														
WA	Battery-less Absolute Encoder specification														
WL	Wireless connection specification														
WL2	Wireless axis operation specification														

* Please see main ELECYLINDER catalog for full options.

● Maximum speed / payload table by stroke

Stroke

* The length of the band indicates the selectable stroke.
Example) RR6S can be selected from 50 to 400mm

Max. speed (operating speed)

* <> represents vertical operation.

Cycle time

* This is the one-way travel time when the longest stroke is operated at the horizontal mount, maximum speed and maximum acceleration/deceleration.

Payload

* The payload varies depending on the installation position.

Series	(1) Type	(2) Lead		Stroke (mm) and max. speed (mm/s)											Payload (kg)		
		Model number	mm	(3) Stroke											Horizontal	Vertical	
				25	50	100	150	200	250	300	350	400	450	500			
EC-	RR6 / DRR6	S-	20	800											0.748 sec	6	1.5
		H-	12	700											0.799 sec	25	4
		M-	6	450											1.065 sec	40	10
		L-	3	225											3.31 sec	60	20
	RR7 / DRR7	S-	24	860 <640>											0.835 sec	20	3
		H-	16	700 <560>											1.05 sec	50	8
		M-	8	350											1.57 sec	60	18
		L-	4	175											2.987 sec	80	28

EC-DRR6□AH

EC-DRR7□AH

CAD drawings can be downloaded from our website.
www.intelligentactuator.com

2D CAD

3D CAD

Recommended options

Battery-less Absolute

Model: **WA**

Keeps location information without battery.

As it is equipped with a mechanical position detection mechanism, there is no need for the battery-powered backup of the position information.

Battery not required

Home return not required



Model: **WL/WL2**

"Easy setting" & "Trial run" using wireless connection.

The touch panel teaching pendant TB-03 can be used to eliminate the need for cable connection to the actuator. The alarm information can be confirmed immediately when trouble occurs.

See **P.14** for details

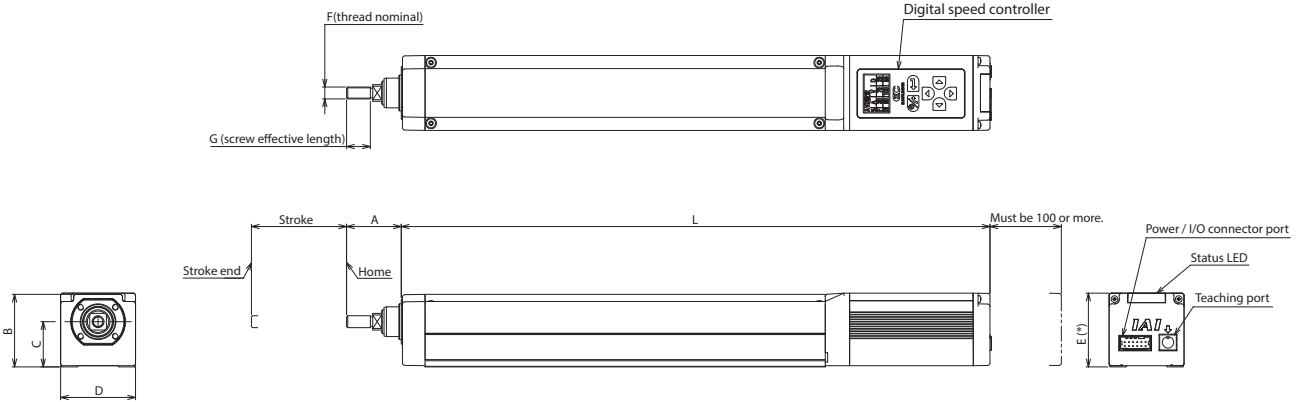
Shortened adjustment time

Cable not required

Dimensions

Refer to the homepage for dimensions related to installation.

(*) For ELECYLINDER with digital speed controller, the E dimension is +10mm.



		Stroke	50	100	150	200	250	300	350	400	450	500
RR6□AH	L	Without brake	345	395	445	495	545	595	645	695		
		With brake	385	435	485	535	585	635	685	735		
		A					46					
		B					61					
		C					38					
		D					63					
		E (*)					62					
		F					M10×1.25					
	G					20						
RR7□AH	L	Without brake	417.5	467.5	517.5	567.5	617.5	667.5	717.5	767.5	817.5	867.5
		With brake	467.5	517.5	567.5	617.5	667.5	717.5	767.5	817.5	867.5	917.5
		A					58					
		B					71					
		C					45					
		D					75					
		E (*)					76					
		F					M14×1.5					
	G					27.5						

Radial Cylinder <motor side-mounted>

Max. payload	80kg
Max. stroke	315mm
Max. speed	860mm/s

Built-in 2-row guide ball screw drive

Recommended options

Battery-less Absolute



● **Purchased model** For models (1) ~ (3), select from the following "Maximum speed / payload table by stroke".

EC	(1)	(2)	R-	(3)	(4)	(5)
Series	Type	Lead		Stroke	(4) Power / I/O cable length	(5) Options
	RR3 RR4 RR6 RR7	S H M L		50 to 300mm 65 to 315mm (per 50mm)	1 to 10 Specify the cable length in 1m increments 	B Brake
	DRR3 DRR4 DRR6 DRR7					0 No cable With power / I/O connector
						WL Wireless connection specification
						WL2 Wireless axis operation specification

* Please see main ELECYLINDER catalog for full options.

● Maximum speed / payload table by stroke

Stroke

Distance

* The length of the band indicates the selectable stroke.
Example) RR3H can be selected from 50 to 300mm

Max. speed (operating speed)

* The maximum speed varies depending on the stroke.
Example) When RR3H has a stroke of 250mm, the maximum speed will be 210mm/s
* <> represents vertical operation.

Cycle time

* This is the one-way travel time when the longest stroke is operated at the horizontal mount, maximum speed and maximum acceleration/deceleration.

Payload

Horizontal Weight Vertical

* The payload varies depending on the installation position.

Series	(1) Type	(2) Lead		Stroke (mm) and max. speed (mm/s)							Payload (kg)				
		Model number	mm	(3) Stroke							Horizontal	Vertical			
				25	50	100	150	200	250	300					
EC-	RR3 / DRR3	H-	6			360			300	210	150	2.107 sec	9	1.5	
		M-	4			240			200	140	100	3.049 sec	14	2.5	
		L-	2			120			100	70	50	6.072 sec	18	3.5	
	RR4 / DRR4	S-	16				800			600	440	0.825 sec	7	1.5	
		H-	10				600			570	390	290	1.158 sec	16	2.5
		M-	5				350			280	190	140	2.247 sec	25	5
		L-	2.5				175 <150>			135	90	70	4.369 sec	35	6.5
					25	65	115	165	215	265	315				
	RR6 / DRR6	S-	20						800				0.642 sec	6	1.5
		H-	12						700		660	480	0.804 sec	25	4
		M-	6						450		325	235	1.455 sec	40	10
		L-	3						225		160	115	2.829 sec	60	12.5
RR7 / DRR7	S-	24						860 <640>				0.604 sec	20	3	
	H-	16						700 <560>				0.72 sec	50	8	
	M-	8						320 <280>				1.165 sec	60	18	
	L-	4						160 <140>				2.093 sec	80	19	

EC-DRR3□R

EC-DRR4□R

EC-DRR6□R

EC-DRR7□R

CAD drawings can be downloaded from our website.
www.intelligentactuator.com

2D CAD

3D CAD

Recommended options

Battery-less Absolute

Model: WA

Keeps location information without battery.

As it is equipped with a mechanical position detection mechanism, there is no need for the battery-powered backup of the position information.

Battery not required

Home return not required



Model: WL/WL2

"Easy setting" & "Trial run" using wireless connection.

The touch panel teaching pendant TB-03 can be used to eliminate the need for cable connection to the actuator. The alarm information can be confirmed immediately when trouble occurs.

See P.14 for details

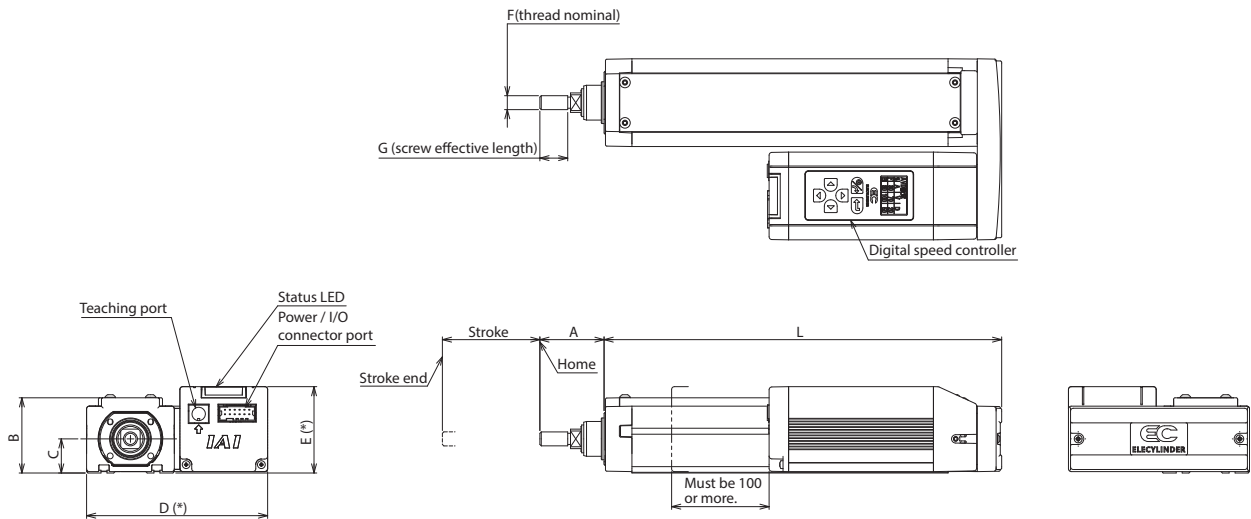
Shortened adjustment time

Cable not required

Dimensions

Refer to the homepage for dimensions related to installation.

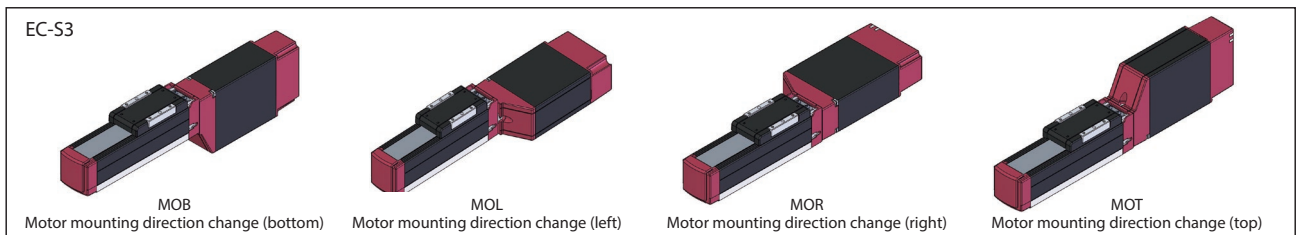
(*) For ELECYLINDER with digital speed controller, the D dimension is +10mm for DRR3□R/DRR4□R, and E dimension is +10mm for DRR6□R/DRR7□R.



	Stroke	50	100	150	200	250	300
RR3□R	L	167	217	267	317	367	417
	A			29.5			
	B			38.5			
	C			18			
	D(*)			109.5			
	E			35			
	F			M8×1.25			
RR4□R	L	186	236	286	336	386	436
	A			46			
	B			50			
	C			22			
	D(*)			117			
	E			43			
	F			M10×1.25			
G			20				

	Stroke	65	115	165	215	265	315
RR6□R	L	235.5	285.5	335.5	385.5	435.5	485.5
	A			46			
	B			54			
	C			24.5			
	D			130			
	E(*)			62			
	F			M10×1.25			
RR7□R	L	275.5	325.5	375.5	425.5	475.5	525.5
	A			63.5			
	B			64			
	C			32			
	D			151			
	E(*)			72			
	F			M14×1.5			
G			27.5				

For more mounting options, please see page 28.



High Rigidity Radial Cylinder <motor side-mounted>

Max. payload	80kg
Max. stroke	500mm
Max. speed	860mm/s

Built-in 4-row guide ball screw drive

Recommended options

Battery-less Absolute



Purchased model

For models (1) ~ (3), select from the following "Maximum speed / payload table by stroke".

Digital speed controller

EC	-	(1)	(2)	AHR-	(3)	-	(4)	-	(5)								
Series	-	Type	Lead	-	Stroke	-	(4) Power / I/O cable length	-	(5) Options								
		RR6 RR7 DRR6 DRR7	S H M L		50 to 500mm (per 50mm)		<div style="display: flex; align-items: center;"> <div style="border: 1px solid black; padding: 2px;">1 to 10</div> <div style="margin: 0 10px;">Specify the cable length in 1m increments</div> </div>		<table border="1" style="width: 100%; border-collapse: collapse;"> <tr> <td style="text-align: center;">B</td> <td>Brake</td> </tr> <tr> <td style="text-align: center;">WA</td> <td>Battery-less Absolute Encoder specification</td> </tr> <tr> <td style="text-align: center;">WL</td> <td>Wireless connection specification</td> </tr> <tr> <td style="text-align: center;">WL2</td> <td>Wireless axis operation specification</td> </tr> </table>	B	Brake	WA	Battery-less Absolute Encoder specification	WL	Wireless connection specification	WL2	Wireless axis operation specification
B	Brake																
WA	Battery-less Absolute Encoder specification																
WL	Wireless connection specification																
WL2	Wireless axis operation specification																

* Please see main ELECYLINDER catalog for full options.

Maximum speed / payload table by stroke

Stroke

* The length of the band indicates the selectable stroke.
Example) RR6S can be selected from 50 to 400mm

Max. speed (operating speed)

* < > represents vertical operation.

Cycle time

* This is the one-way travel time when the longest stroke is operated at the horizontal mount, maximum speed and maximum acceleration/deceleration.

Payload

* The payload varies depending on the installation position.

Series	(1) Type	(2) Lead		Stroke (mm) and max. speed (mm/s)												Payload (kg)		
				(3) Stroke												Horizontal	Vertical	
		Model number	mm	25	50	100	150	200	250	300	350	400	450	500				
EC-	RR6 / DRR6	S-	20	800												0.748 sec	6	1.5
		H-	12	700												0.799 sec	25	4
		M-	6	450												1.065 sec	40	10
		L-	3	225												1.925 sec	60	20
	RR7 / DRR7	S-	24	860 <640>												0.71 sec	20	3
		H-	16	640 <560>												0.871 sec	50	8
		M-	8	320 <280>												1.431 sec	60	18
		L-	4	150 <140>												2.786 sec	80	28

EC-DRR6□AHR

EC-DRR7□AHR

CAD drawings can be downloaded from our website.
www.intelligentactuator.com

2D CAD

3D CAD

Recommended options

Battery-less Absolute

Model: WA

Keeps location information without battery.

As it is equipped with a mechanical position detection mechanism, there is no need for the battery-powered backup of the position information.

Battery not required

Home return not required



Model: WL/WL2

"Easy setting" & "Trial run" using wireless connection.

The touch panel teaching pendant TB-03 can be used to eliminate the need for cable connection to the actuator. The alarm information can be confirmed immediately when trouble occurs.

See P.14 for details

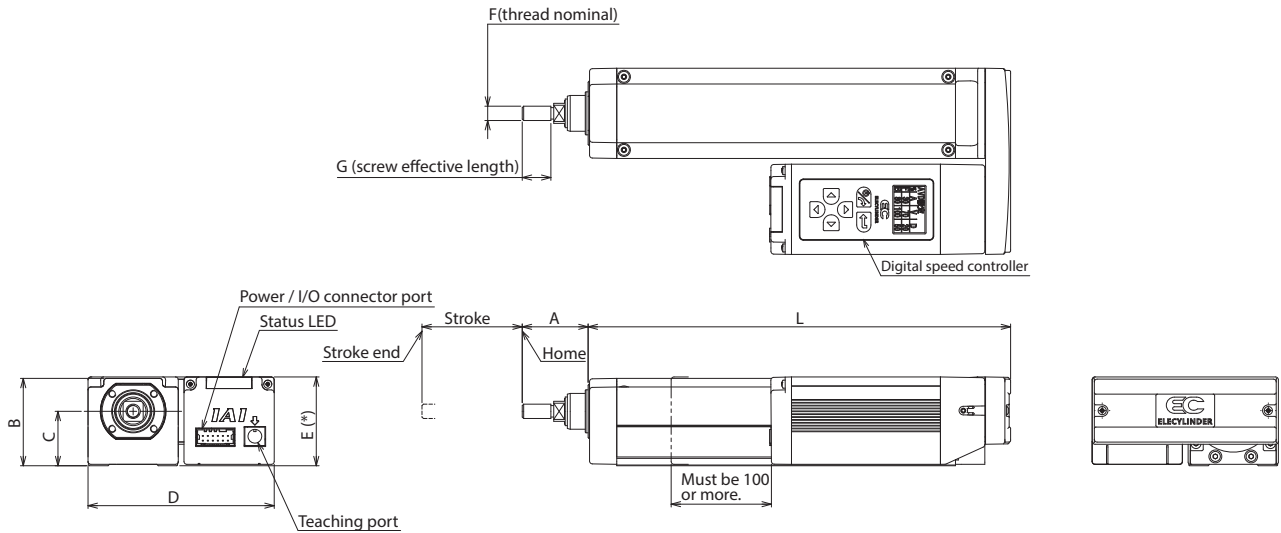
Shortened adjustment time

Cable not required

Dimensions

Refer to the homepage for dimensions related to installation.

(*) For ELECYLINDER with digital speed controller, the E dimension is +10mm.



	Stroke	50	100	150	200	250	300	350	400	450	500
RR6□AHR	L	245	295	345	395	445	495	545	595		
	A					46					
	B					61					
	C					38					
	D					130					
	E (*)					62					
	F					M10×1.25					
RR7□AHR	L	284	334	384	434	484	534	584	634	684	734
	A					58					
	B					71					
	C					45					
	D					152					
	E (*)					76					
	F					M14×1.5					
G					27.5						

Mini type rod

Max. payload	8kg
Max. stroke	50mm
Max. speed	300mm/s

Ball screw drive

Recommended options

Battery-less Absolute



● Purchased model

For models (1) ~ (3), select from the following "Maximum speed / payload table by stroke".

EC	-	(1)	-	(2)	-	(3)	-	(4)	-	(5)
Series	-	Type RP4	-	Lead H M L	-	Stroke 30mm 50mm	-	(4) Power / I/O cable length	-	(5) Options
								1 to 10 Specify the cable length in 1m increments 		B Brake WA Battery-less Absolute Encoder specification WL Wireless connection specification WL2 Wireless axis operation specification
								0 No cable With power / I/O connector		* Please see main ELECYLINDER catalog for full options.

● Maximum speed / payload table by stroke

Stroke

Distance

* The length of the band indicates the selectable stroke.

Max. speed (operating speed)

Cycle time

* This is the one-way travel time when the longest stroke is operated at the horizontal mount, maximum speed and maximum acceleration/deceleration.

Payload

Horizontal Weight Vertical

Weight

* The payload varies depending on the installation position.

Series	(1) Type	(2) Lead		Stroke (mm) and max. speed (mm/s)					Payload (kg)	
		Model number	mm	(3) Stroke					Horizontal	Vertical
				25	30	50				
EC-	RP4	H-	6	300				0.311 sec	2.5	1
		M-	4	200				0.371 sec	4	1.5
		L-	2	100				0.599 sec	8	2.5

EC-RP4



CAD drawings can be downloaded from our website.
www.intelligentactuator.com

2D
CAD

3D
CAD

Recommended options

Battery-less Absolute

Model: **WA**

Keeps location information without battery.

As it is equipped with a mechanical position detection mechanism, there is no need for the battery-powered backup of the position information.

Battery not required

Home return not required



Model: **WL/WL2**

"Easy setting" & "Trial run" using wireless connection.

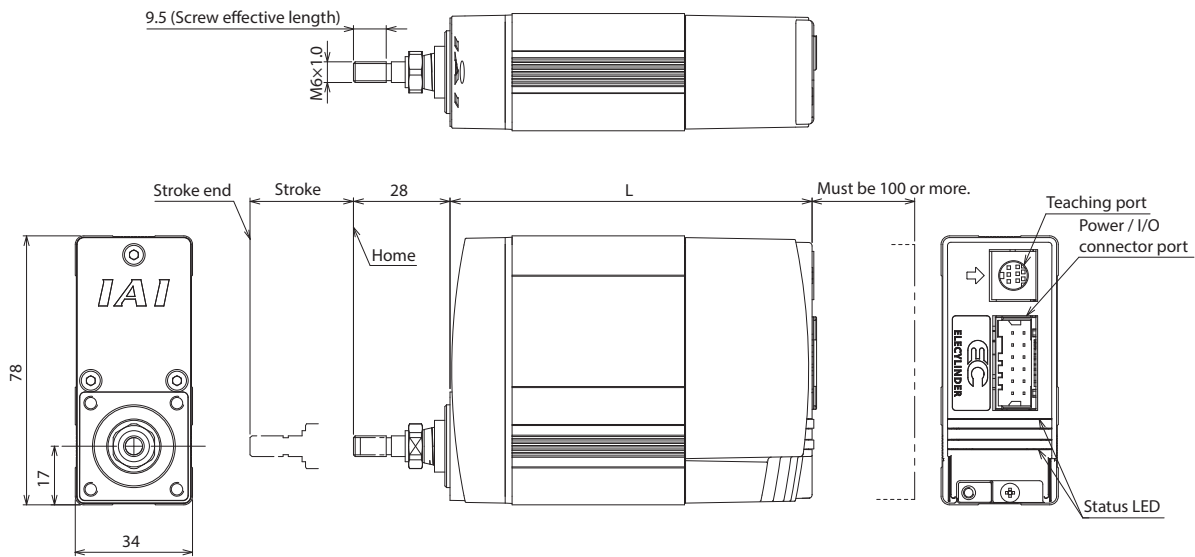
The touch panel teaching pendant TB-03 can be used to eliminate the need for cable connection to the actuator. The alarm information can be confirmed immediately when trouble occurs.

See
P.14 for
details

Shortened adjustment time

Cable not required

Dimensions Refer to the homepage for dimensions related to installation.



Encoder Type	Incremental		Battery-less Absolute		
	Stroke	30	50	30	50
L	Without brake	105	125	125	125
	With brake	135	135	155	155

Mini type rod <with single guide>

Max. payload	8kg
Max. stroke	50mm
Max. speed	300mm/s

Ball screw drive

Recommended options

Battery-less Absolute



● Purchased model For models (1) ~ (3), select from the following "Maximum speed / payload table by stroke".

EC	-	(1)	-	(2)	-	(3)	-	(4)	-	(5)												
Series	-	Type	-	Lead	-	Stroke	-	(4) Power / I/O cable length	-	(5) Options												
	-	GS4	-	H M L	-	30mm 50mm	-	<table border="1"> <tr> <td>1 to 10</td> <td>Specify the cable length in 1m increments </td> </tr> <tr> <td>0</td> <td>No cable With power / I/O connector </td> </tr> </table>	1 to 10	Specify the cable length in 1m increments 	0	No cable With power / I/O connector	-	<table border="1"> <tr> <td>B</td> <td>Brake</td> </tr> <tr> <td>WA</td> <td>Battery-less Absolute Encoder specification</td> </tr> <tr> <td>WL</td> <td>Wireless connection specification</td> </tr> <tr> <td>WL2</td> <td>Wireless axis operation specification</td> </tr> </table>	B	Brake	WA	Battery-less Absolute Encoder specification	WL	Wireless connection specification	WL2	Wireless axis operation specification
1 to 10	Specify the cable length in 1m increments 																					
0	No cable With power / I/O connector																					
B	Brake																					
WA	Battery-less Absolute Encoder specification																					
WL	Wireless connection specification																					
WL2	Wireless axis operation specification																					

* Please see main ELECYLINDER catalog for full options.

● Maximum speed / payload table by stroke

Stroke

Distance

* The length of the band indicates the selectable stroke.

Max. speed (operating speed)

Cycle time

* This is the one-way travel time when the longest stroke is operated at the horizontal mount, maximum speed and maximum acceleration/deceleration.

Payload

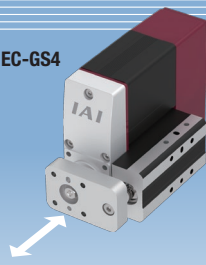
Horizontal Weight Vertical

Weight

* The payload varies depending on the installation position.

Series	(1) Type	(2) Lead		Stroke (mm) and max. speed (mm/s)					Payload (kg)	
		Model number	mm	(3) Stroke					Horizontal	Vertical
				25	30	50				
EC-	GS4	H-	6	300					2.5	1
		M-	4	200					4	1.5
		L-	2	100					8	2.5

EC-GS4



CAD drawings can be downloaded from our website.
www.intelligentactuator.com

2D CAD

3D CAD

Recommended options

Battery-less Absolute

Model: **WA**

Keeps location information without battery.

As it is equipped with a mechanical position detection mechanism, there is no need for the battery-powered backup of the position information.

Battery not required

Home return not required



Model: **WL/WL2**

"Easy setting" & "Trial run" using wireless connection.

The touch panel teaching pendant TB-03 can be used to eliminate the need for cable connection to the actuator. The alarm information can be confirmed immediately when trouble occurs.

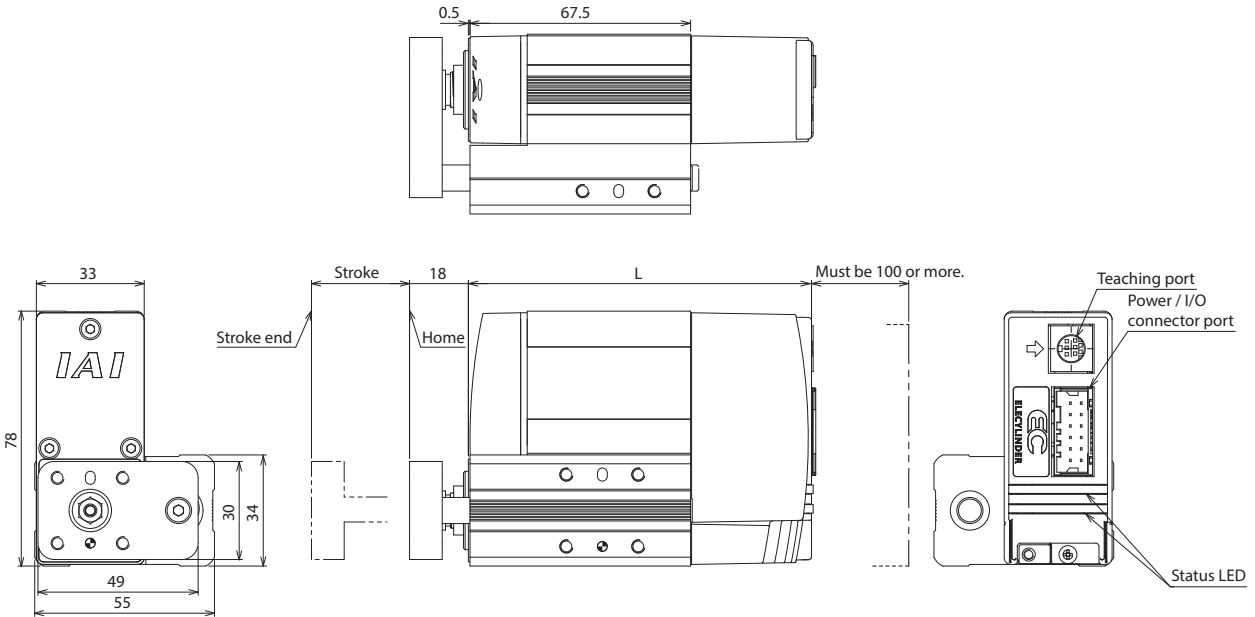
See P.14 for details

Shortened adjustment time

Cable not required

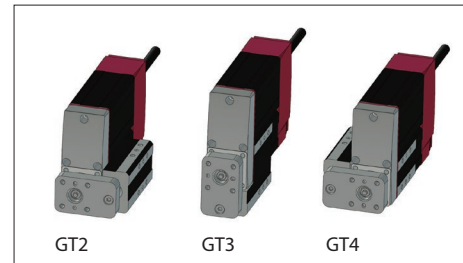
Dimensions Refer to the homepage for dimensions related to installation.

(Note) The figure below shows the guide right mounting specification (GT2).



	Encoder Type	Incremental		Battery-less Absolute	
		30	50	30	50
L	Without brake	105	125	125	125
	With brake	135	135	155	155

Guide mounting direction (optional)



Mini type rod <with double guide>

Max. payload	8kg
Max. stroke	50mm
Max. speed	300mm/s

Ball screw drive

Recommended options

Battery-less Absolute



Purchased model

For models (1) ~ (3), select from the following "Maximum speed / payload table by stroke".

EC	-	(1)	-	(2)	-	(3)	-	(4)	-	(5)
Series	-	Type	-	Lead	-	Stroke	-	(4) Power / I/O cable length	-	(5) Options
	-	GD4	-	H M L	-	30mm 50mm	-	1 to 10 Specify the cable length in 1m increments Up to 10m PLC	-	B Brake WA Battery-less Absolute Encoder specification WL Wireless connection specification WL2 Wireless axis operation specification
	-		-		-		-	0 No cable With power / I/O connector 	-	

* Please see main ELECYLINDER catalog for full options.

Maximum speed / payload table by stroke

Stroke

Distance

* The length of the band indicates the selectable stroke.

Max. speed (operating speed)

Cycle time

Speed

Cycle time

Speed

Acceleration

Deceleration

Time

* This is the one-way travel time when the longest stroke is operated at the horizontal mount, maximum speed and maximum acceleration/deceleration.

Payload

Horizontal

Vertical

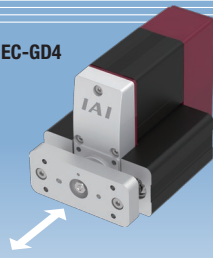
Weight

Weight

* The payload varies depending on the installation position.

Series	(1) Type	(2) Lead		Stroke (mm) and max. speed (mm/s)					(3) Stroke		Payload (kg)		
		Model number	mm						Horizontal	Vertical			
				25	30	50							
EC-	GD4	H-	6	300					0.311 sec	2.5	1		
		M-	4	200					0.371 sec	4	1.5		
		L-	2	100					0.599 sec	8	2.5		

EC-GD4



CAD drawings can be downloaded from our website.
www.intelligentactuator.com

2D CAD

3D CAD

Recommended options

Battery-less Absolute

Model: **WA**

Keeps location information without battery.

As it is equipped with a mechanical position detection mechanism, there is no need for the battery-powered backup of the position information.

Battery not required

Home return not required



Model: **WL/WL2**

"Easy setting" & "Trial run" using wireless connection.

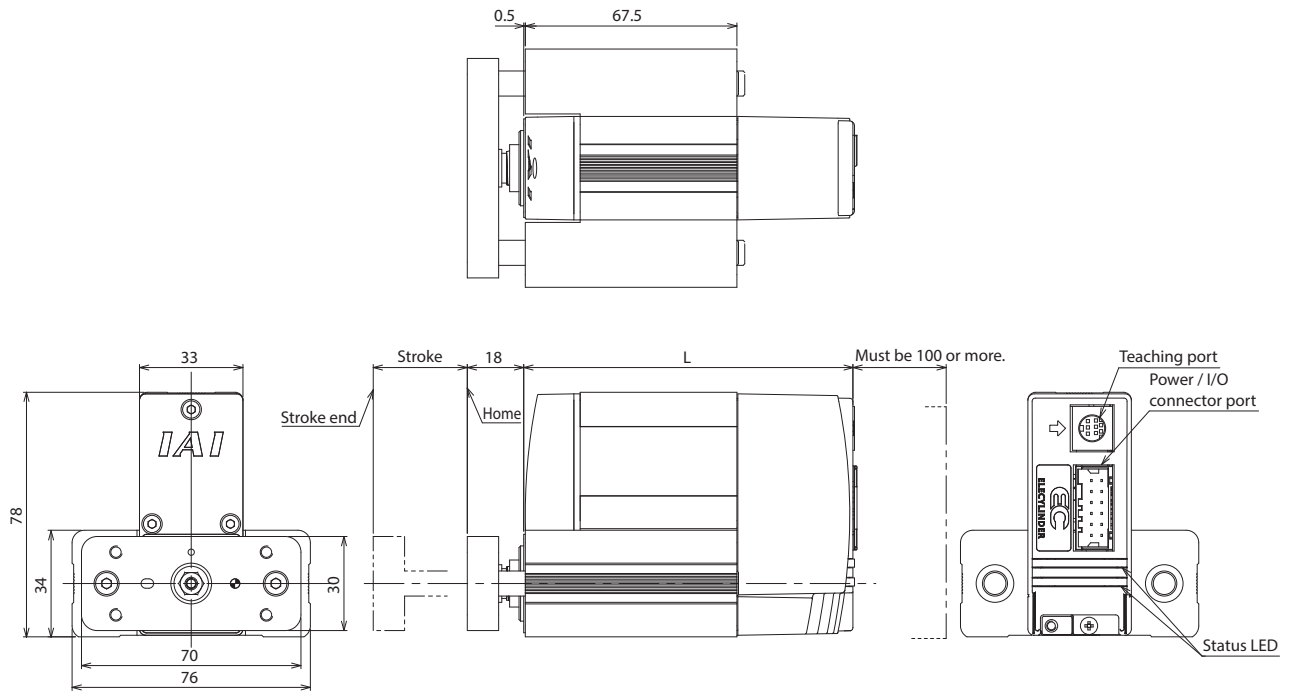
The touch panel teaching pendant TB-03 can be used to eliminate the need for cable connection to the actuator. The alarm information can be confirmed immediately when trouble occurs.

See P.14 for details

Shortened adjustment time

Cable not required

Dimensions Refer to the homepage for dimensions related to installation.



	Encoder Type	Incremental		Battery-less Absolute	
		30	50	30	50
L	Stroke	105	125	105	125
	Without brake	135	135	155	155

[IP67] Dust-proof / Splash-proof Rod

Max. payload	80kg
Max. stroke	300mm
Max. speed	860mm/s

Ball screw drive



● Purchased model For models (1) ~ (3), select from the following "Maximum speed / payload table by stroke".

EC	-	(1)	(2)	W-	(3)	-	(4)	-	(5)
Series	-	Type	Lead	-	Stroke	-	(4) Power / I/O cable length	-	(5) Options
	-	R6 R7	S H M L	-	50 to 300mm (per 50mm)	-	1 to 8 Specify the cable length in 1m increments 	-	B Brake WA Battery-less Absolute Encoder specification WL Wireless connection specification WL2 Wireless axis operation specification
							0 No cable With power / I/O connector		

* Please see main ELECYLINDER catalog for full options.

● Maximum speed / payload table by stroke

Stroke

* The length of the band indicates the selectable stroke.
Example) R6S can be selected from 50 to 300mm

Max. speed (operating speed)

* The maximum speed varies depending on the stroke.
Example) When R6S has a stroke of 250mm, the maximum speed will be 800mm/s
* <> represents vertical operation.

Cycle time

* This is the one-way travel time when the longest stroke is operated at the horizontal mount, maximum speed and maximum acceleration/deceleration.

Payload

* The payload varies depending on the installation position.

Series	(1) Type	(2) Lead		Stroke (mm) and max. speed (mm/s)							Payload (kg)		
		Model number	mm	(3) Stroke							Horizontal	Vertical	
				25	50	100	150	200	250	300			
EC-	R6	S-	20	800							0.635 sec	6	1.5
		H-	12	700					547		0.75 sec	25	4
		M-	6	450			376		268		1.239 sec	40	10
		L-	3	225		186		133		2.35 sec	60	12.5	
	R7	S-	24	860 <640>							0.585 sec	20	3
		H-	16	700 <560>							0.639 sec	50	8
		M-	8	350							0.999 sec	60	18
		L-	4	175						1.844 sec	80	19	

EC-R6□W

EC-R7□W

CAD drawings can be downloaded from our website.
www.intelligentactuator.com

2D CAD

3D CAD

Recommended options

Battery-less Absolute

Model: **WA**

Keeps location information without battery.

As it is equipped with a mechanical position detection mechanism, there is no need for the battery-powered backup of the position information.

Battery not required

Home return not required



Model: **WL/WL2**

"Easy setting" & "Trial run" using wireless connection.

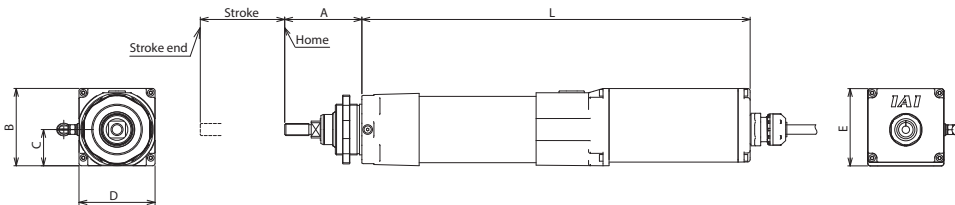
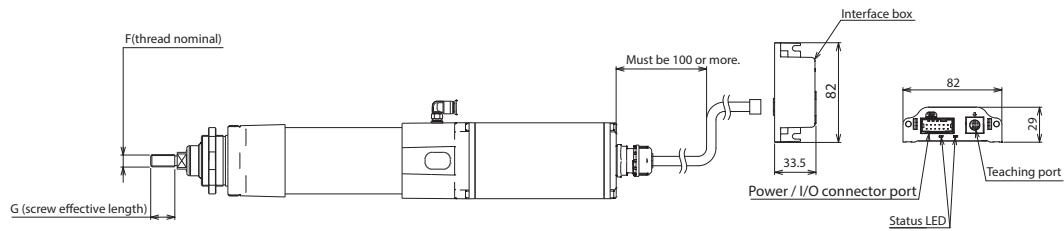
The touch panel teaching pendant TB-03 can be used to eliminate the need for cable connection to the actuator. The alarm information can be confirmed immediately when trouble occurs.

See **P.14** for details

Shortened adjustment time

Cable not required

Dimensions Refer to the homepage for dimensions related to installation.



		Stroke	50	100	150	200	250	300
R6□W	L	Without brake	322	372	422	472	522	572
		With brake	362	412	462	512	562	612
		A	64					
		B	64					
		C	30					
		D	63					
		E	64					
		F	M10×1.25					
	G	20						
R7□W	L	Without brake	361.5	411.5	461.5	511.5	561.5	611.5
		With brake	411.5	461.5	511.5	561.5	611.5	661.5
		A	79.5					
		B	73					
		C	35					
		D	73					
		E	73					
		F	M14×1.5					
	G	27.5						

[IP67] Dust-proof / Splash-proof Radial Cylinder

Max. payload	80kg
Max. stroke	315mm
Max. speed	860mm/s

Built-in 2-row guide ball screw drive

Recommended options

Battery-less Absolute



● **Purchased model** For models (1) ~ (3), select from the following "Maximum speed / payload table by stroke".

EC	-	(1)	(2)	W-	(3)	-	(4)	-	(5)												
Series	-	Type	Lead	-	Stroke	-	(4) Power / I/O cable length	-	(5) Options												
	-	RR6 RR7	S H M L	-	65 to 315mm (per 50mm)	-	<table border="1"> <tr> <td>1 to 8</td> <td>Specify the cable length in 1m increments</td> </tr> <tr> <td>0</td> <td>No cable With power / I/O connector</td> </tr> </table>	1 to 8	Specify the cable length in 1m increments	0	No cable With power / I/O connector	-	<table border="1"> <tr> <td>B</td> <td>Brake</td> </tr> <tr> <td>WA</td> <td>Battery-less Absolute Encoder specification</td> </tr> <tr> <td>WL</td> <td>Wireless connection specification</td> </tr> <tr> <td>WL2</td> <td>Wireless axis operation specification</td> </tr> </table>	B	Brake	WA	Battery-less Absolute Encoder specification	WL	Wireless connection specification	WL2	Wireless axis operation specification
1 to 8	Specify the cable length in 1m increments																				
0	No cable With power / I/O connector																				
B	Brake																				
WA	Battery-less Absolute Encoder specification																				
WL	Wireless connection specification																				
WL2	Wireless axis operation specification																				

* Please see main ELECYLINDER catalog for full options.

● **Maximum speed / payload table by stroke**

Stroke

Distance

* The length of the band indicates the selectable stroke.
Example) RR6S can be selected from 65 to 315mm

Max. speed (operating speed)

* The maximum speed varies depending on the stroke.
Example) When RR6S has a stroke of 115mm, the maximum speed will be 800mm/s
* <> represents vertical operation.

Cycle time

* This is the one-way travel time when the longest stroke is operated at the horizontal mount, maximum speed and maximum acceleration/deceleration.

Payload

Horizontal Weight Vertical Weight

* The payload varies depending on the installation position.

Series	(1) Type	(2) Lead		Stroke (mm) and max. speed (mm/s)							Payload (kg)		
		Model number	mm	(3) Stroke							Horizontal	Vertical	
				25	65	115	165	215	265	315			
EC-	RR6	S-	20	800							0.642 sec	6	1.5
		H-	12	700			660		480		0.804 sec	25	4
		M-	6	450			325		235		1.455 sec	40	10
		L-	3	225			160		115		2.829 sec	60	12.5
	RR7	S-	24	860 <640>							0.604 sec	20	3
		H-	16	700 <560>							0.72 sec	50	8
		M-	8	350							1.041 sec	60	18
		L-	4	175							1.929 sec	80	19

EC-RR6□W

EC-RR7□W

CAD drawings can be downloaded from our website.
www.intelligentactuator.com

2D CAD

3D CAD

Recommended options

Battery-less Absolute

Model: **WA**

Keeps location information without battery.

As it is equipped with a mechanical position detection mechanism, there is no need for the battery-powered backup of the position information.

Battery not required

Home return not required



Model: **WL/WL2**

"Easy setting" & "Trial run" using wireless connection.

The touch panel teaching pendant TB-03 can be used to eliminate the need for cable connection to the actuator. The alarm information can be confirmed immediately when trouble occurs.

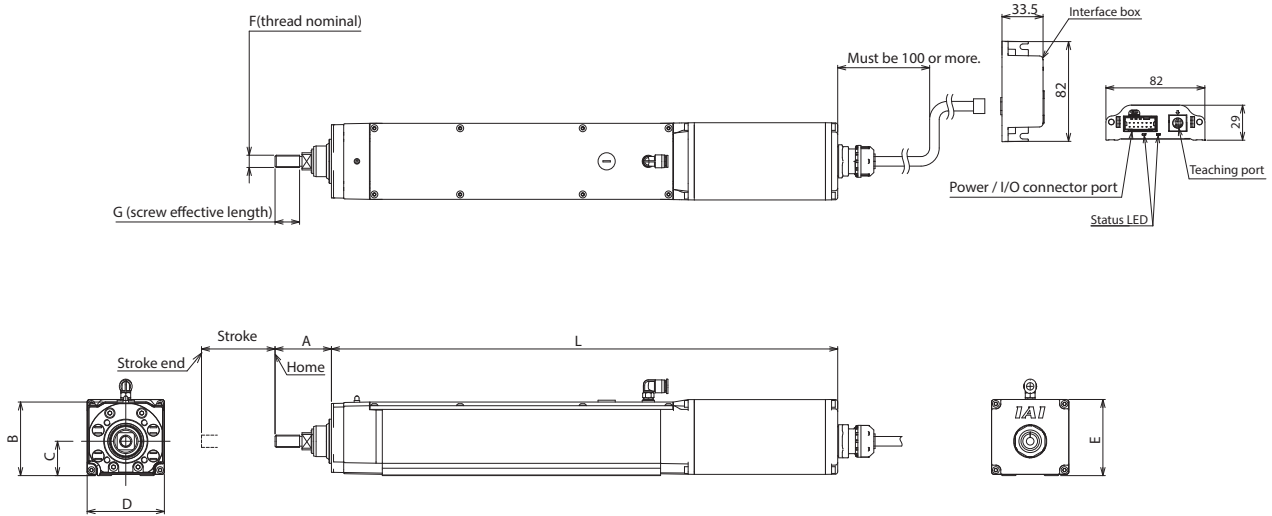
See P.14 for details

Shortened adjustment time

Cable not required

Dimensions

Refer to the homepage for dimensions related to installation.



		Stroke	65	115	165	215	265	315
RR6□W	L	Without brake	363	413	463	513	563	613
		With brake	403	453	503	553	603	653
		A				46		
		B				60		
		C				28		
		D				63		
		E				62		
		F				M10×1.25		
	G				20			
RR7□W	L	Without brake	411.5	461.5	511.5	561.5	611.5	661.5
		With brake	461.5	511.5	561.5	611.5	661.5	711.5
		A				58		
		B				71.5		
		C				36		
		D				73		
		E				74		
		F				M14×1.5		
	G				27.5			

Table

Max. payload	8kg
Max. stroke	50mm
Max. speed	300mm/s

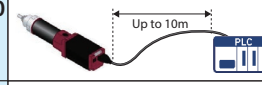

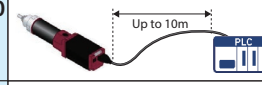

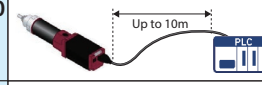

Ball screw drive

Recommended options

Battery-less Absolute



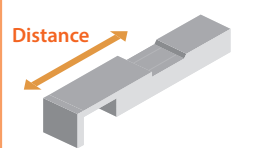
● Purchased model For models (1) ~ (3), select from the following "Maximum speed / payload table by stroke".

EC	-	(1)	-	(2)	-	(3)	-	(4)	-	(5)												
Series	-	Type	-	Lead	-	Stroke	-	(4) Power / I/O cable length	-	(5) Options												
	-	TC4 TW4	-	H M L	-	30mm 50mm	-	<table border="1"> <tr> <td>1 to 10</td> <td>Specify the cable length in 1m increments </td> </tr> <tr> <td>0</td> <td>No cable With power / I/O connector </td> </tr> </table>	1 to 10	Specify the cable length in 1m increments 	0	No cable With power / I/O connector 	-	<table border="1"> <tr> <td>B</td> <td>Brake</td> </tr> <tr> <td>WA</td> <td>Battery-less Absolute Encoder specification</td> </tr> <tr> <td>WL</td> <td>Wireless connection specification</td> </tr> <tr> <td>WL2</td> <td>Wireless axis operation specification</td> </tr> </table>	B	Brake	WA	Battery-less Absolute Encoder specification	WL	Wireless connection specification	WL2	Wireless axis operation specification
1 to 10	Specify the cable length in 1m increments 																					
0	No cable With power / I/O connector 																					
B	Brake																					
WA	Battery-less Absolute Encoder specification																					
WL	Wireless connection specification																					
WL2	Wireless axis operation specification																					

* Please see main ELECYLINDER catalog for full options.

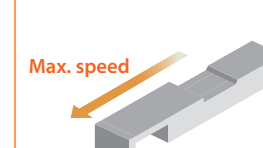
● Maximum speed / payload table by stroke

Stroke

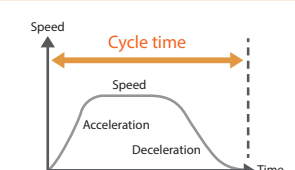


* The length of the band indicates the selectable stroke.

Max. speed (operating speed)

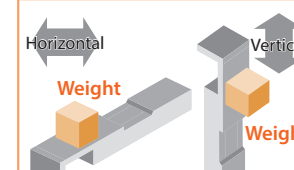


Cycle time



* This is the one-way travel time when the longest stroke is operated at the horizontal mount, maximum speed and maximum acceleration/deceleration.

Payload



* The payload varies depending on the installation position.

Series	(1) Type	(2) Lead		Stroke (mm) and max. speed (mm/s)						(3) Stroke		Payload (kg)	
		Model number	mm							Horizontal	Vertical		
				25	30	50							
EC-	TC4	H-	6	300						0.311 sec	2.5	1	
		M-	4	200						0.371 sec	4	1.5	
		L-	2	100						0.599 sec	8	2.5	
	TW4	H-	6	300						0.311 sec	2.5	1	
		M-	4	200						0.371 sec	4	1.5	
		L-	2	100						0.599 sec	8	2.5	

Rotary

Oscillation angle	330 degrees
Max. speed	600 degrees/s

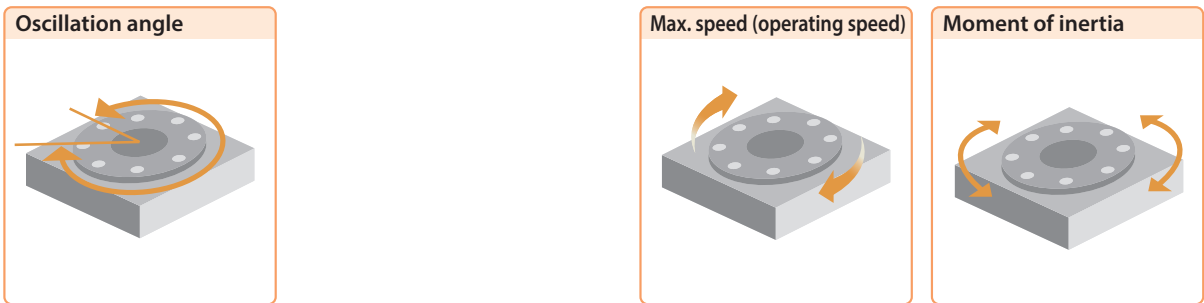


● Purchased model For models (1) and (3), select from the following "Oscillation angle and max. speed".

EC	-	(1)	M-	-	(3)	-	(4)	-	(5)
Series	-	Type	-	Oscillation angle	-	(4) Power / I/O cable length		-	(5) Options
	-	RTC9 RTC12	-	330: 330°	-	1 to 10	Specify the cable length in 1m increments 	-	B Brake WA Battery-less Absolute Encoder specification WL Wireless connection specification WL2 Wireless axis operation specification
	-		-		-	0	No cable With power / I/O connector	-	

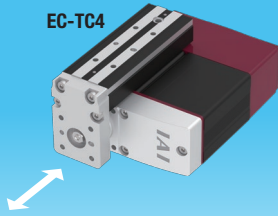
* Please see main ELECYLINDER catalog for full options.

● Oscillation angle and Max. speed / Max. torque

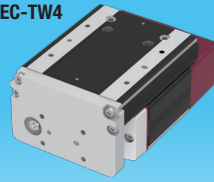


Series	(1) Type	Oscillation angle (°) and maximum speed (°/S)		Max. torque (N·m)	Allowable inertia moment (kg·m ²)
		330	600		
EC-	RTC9M	600		1.5	0.02
	RTC12M	600		8.0	0.13

EC-TC4



EC-TW4



CAD drawings can be downloaded from our website.
www.intelligentactuator.com

2D
CAD

3D
CAD

Recommended options

Battery-less Absolute

Model: WA

Keeps location information without battery.

As it is equipped with a mechanical position detection mechanism, there is no need for the battery-powered backup of the position information.

Battery not required

Home return not required



Model: WL/WL2

"Easy setting" & "Trial run" using wireless connection.

The touch panel teaching pendant TB-03 can be used to eliminate the need for cable connection to the actuator. The alarm information can be confirmed immediately when trouble occurs.

See P.14 for details

Shortened adjustment time

Cable not required

Dimensions Refer to the homepage for dimensions related to installation.

EC-TC4

(Note) The figure below shows the table left mounting specification (GT4).

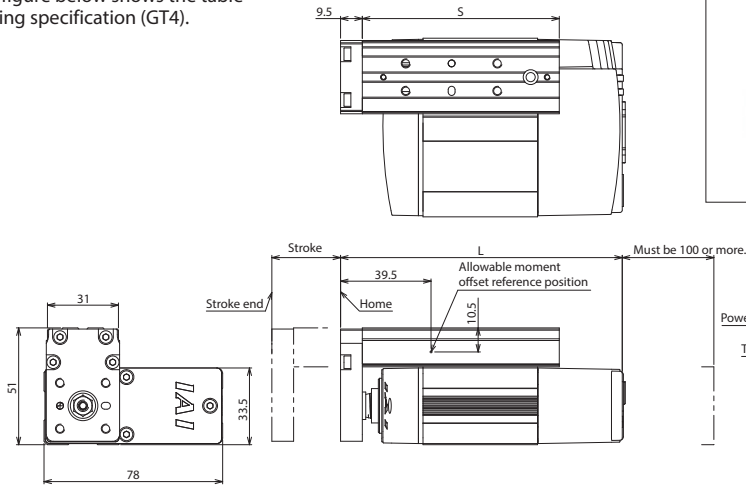
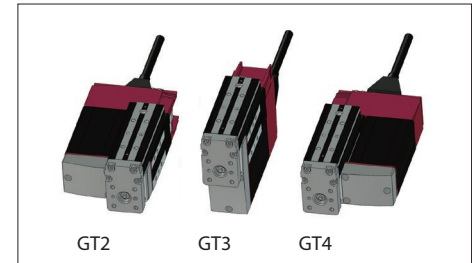
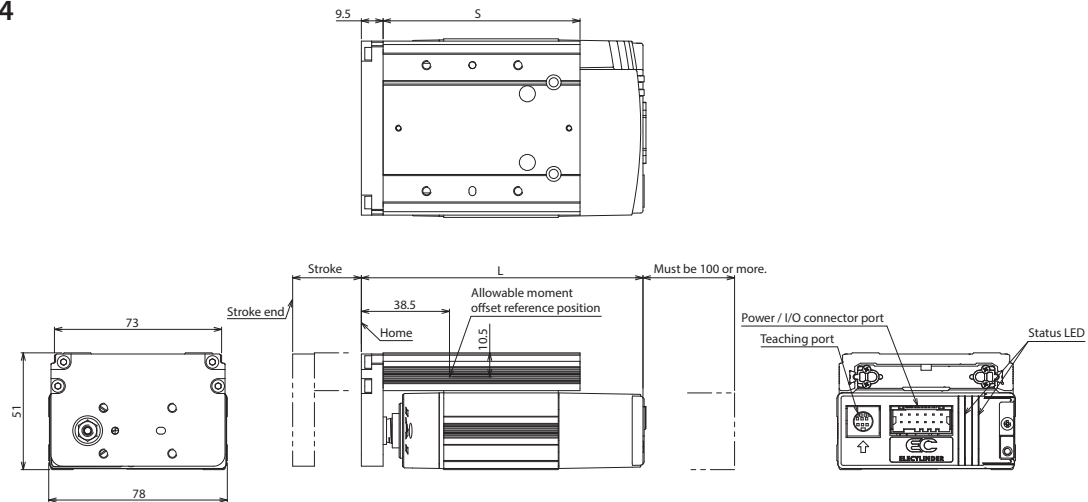


Table mounting direction (optional)

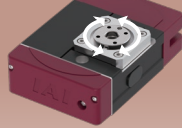


EC-TW4

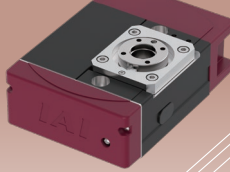


Encoder Type		Incremental		Battery-less Absolute	
Stroke		30	50	30	50
L	Without brake	123	143	143	143
	With brake	153	153	173	173
S		86	106	86	106

EC-RTC9



EC-RTC12



CAD drawings can be downloaded from our website.
www.intelligentactuator.com

2D
CAD

3D
CAD

Recommended options

Battery-less
Absolute

Model: **WA**

Keeps location information without battery.

As it is equipped with a mechanical position detection mechanism, there is no need for the battery-powered backup of the position information.

Battery not required

Home return not required



Model: **WL/WL2**

"Easy setting" & "Trial run" using wireless connection.

The touch panel teaching pendant TB-03 can be used to eliminate the need for cable connection to the actuator. The alarm information can be confirmed immediately when trouble occurs.

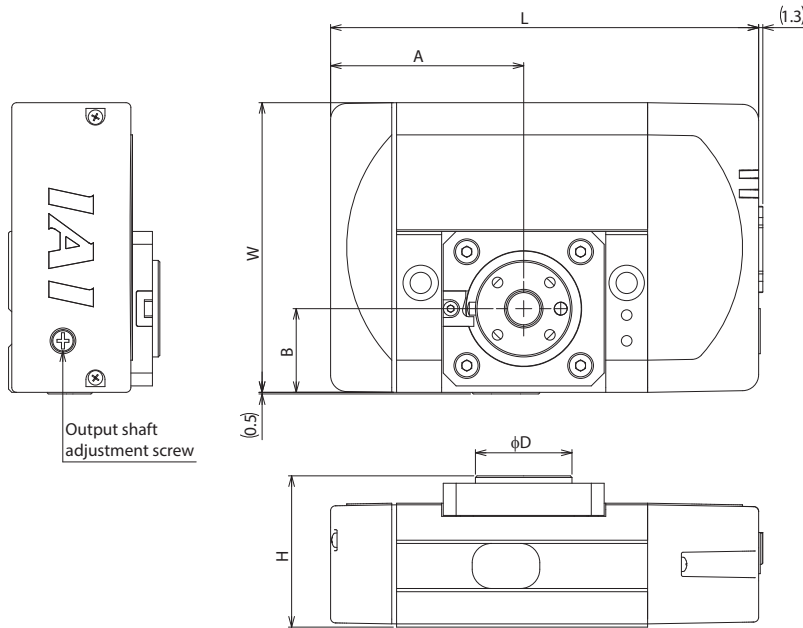
See
P.14 for
details

Shortened adjustment time

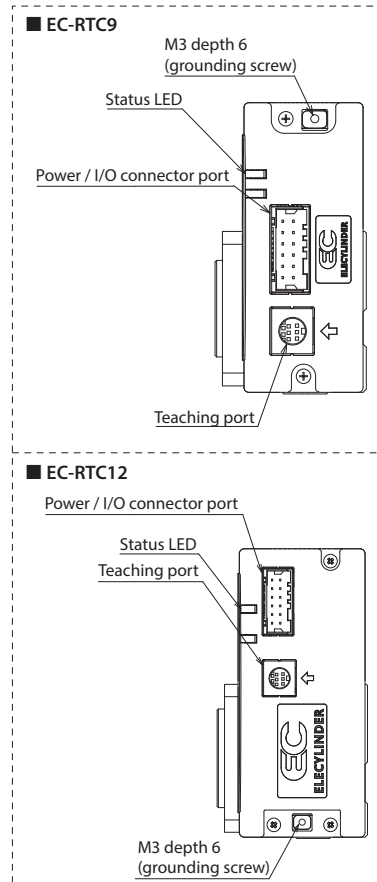
Cable not required

Dimensions

Refer to the homepage for dimensions related to installation.



Type		RTC9	RTC12
L	Without brake	133	166.5
	With brake	155	204.5
W		90	117
H		47	61
φD		30	40
A		60	73
B		26	32

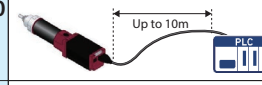



Stopper Cylinder

Max. payload	15kg
Max. stroke	50mm
Max. speed	200mm/s



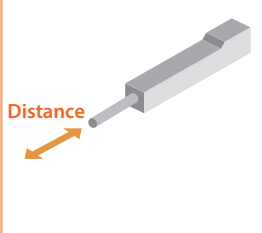
● Purchased model For models (1) ~ (3), select from the following "Maximum speed / payload table by stroke".

EC	-	(1)	-	(2)	-	(3)	-	(4)	-	(5)
Series	-	Type	-	Lead	-	Stroke	-	(4) Power / I/O cable length	-	(5) Options
	-	ST15	-	L	-	50mm	-	1 to 10 Specify the cable length in 1m increments 	-	B Brake WA Battery-less Absolute Encoder specification WL Wireless connection specification WL2 Wireless axis operation specification
	-		-		-		-	0 No cable With power / I/O connector 	-	

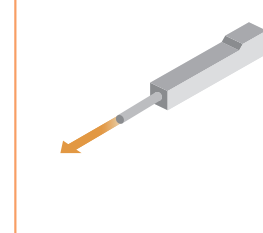
* Please see main ELECYLINDER catalog for full options.

● Maximum speed / payload table by stroke

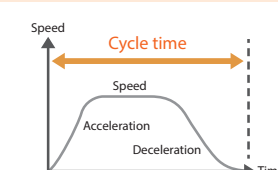
Stroke



Max. speed (operating speed)

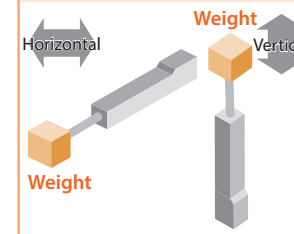


Cycle time



* This is the one-way travel time when the longest stroke is operated at the horizontal mount, maximum speed and maximum acceleration/deceleration.

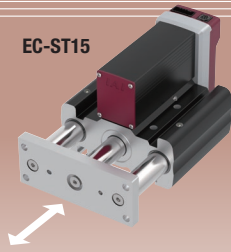
Payload



* The payload varies depending on the installation position.

Series	(1) Type	(2) Lead		Stroke (mm) and max. speed (mm/s)				Payload (kg)	
		Model number	mm	(3) Stroke		0.371 sec	Horizontal	Vertical	
EC-	ST15	L	3	25	50		200	15	12.5

EC-ST15



CAD drawings can be downloaded from our website.
www.intelligentactuator.com

2D
CAD

3D
CAD

Recommended options

Battery-less
Absolute

Model: **WA**

Keeps location information without battery.

As it is equipped with a mechanical position detection mechanism, there is no need for the battery-powered backup of the position information.

Battery not required

Home return not required



Model: **WL/WL2**

"Easy setting" & "Trial run" using wireless connection.

The touch panel teaching pendant TB-03 can be used to eliminate the need for cable connection to the actuator. The alarm information can be confirmed immediately when trouble occurs.

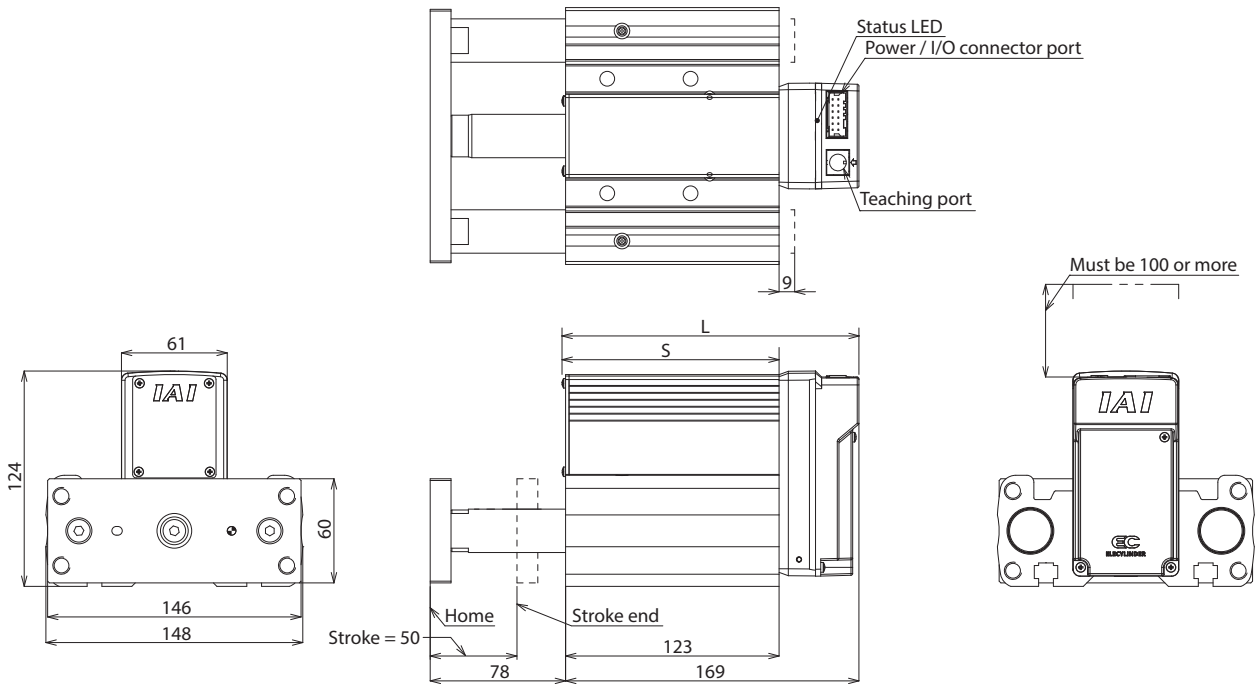
See
P.14 for
details

Shortened adjustment time

Cable not required

Dimensions

Refer to the homepage for dimensions related to installation.



	Encoder Type	Incremental	Battery-less Absolute
L	Without brake	169	169
	With brake	169	176
S	Without brake	123	123
	With brake	123	130

SUPPORT A network of authorized representatives in the US to serve you.

Support for phase of planning, product selection, quotation, problem solving, maintenance, training, etc.

USA
 ● 3 Sales & Support Centers
 ● 12 Sales Offices
 ■ 48 local Distributors

CANADA
 ■ 5 local Distributors

MEXICO
 ■ 1 local Distributor

IAI AMERICA
 US Headquarters & Western Region
 (Los Angeles, CA)

Midwest Branch Office
 (Chicago, IL)

Southeast Branch Office
 (Atlanta, GA)

IAI America, Inc.

- **US Headquarters & Western Region (Los Angeles, CA)**
 2690 W. 237th Street, Torrance, CA 90505
Phone 800-736-1712 **FAX** 310-891-0815
URL www.intelligentactuator.com
- **Midwest Branch Office (Chicago, IL)**
 110 E. State Parkway, Schaumburg, IL 60173
Phone 800-944-0333 **FAX** 847-908-1399
- **Southeast Branch Office (Atlanta, GA)**
 1220 Kennestone Circle, Suite 108, Marietta, GA 30066
Phone 888-354-9470 **FAX** 678-354-9471

www.intelligentactuator.com/inquiry/

日本語 OK 電話 修理 飛行機

The information contained in this booklet may change without prior notice due to product improvement.

■ **Contact us for your local distributor information.**

INTERNATIONAL NETWORK 200 Locations in 30 countries around the world

- **Europe**
 1 IAI Group location
 22 Local Distributors
- **Thailand**
- **Vietnam**
- **Philippines**
- **Indonesia**
- **India**
- **Singapore**
- **Malaysia**
- **China**
 3 IAI Group locations
 34 Sales Offices
- **Korea**
- **Taiwan**
- **Japan**
 Global Headquarter
 29 Sales Offices
- **USA**
 3 IAI Group locations
 12 Sales Offices
 48 Local Distributors
- **Canada**
 5 Local Distributors
- **Mexico**
 1 Local Distributor
- **Brazil**
 1 Sales Offices

IAI America, Inc.

USA Headquarters & Western Region (Los Angeles): 2690 W. 237th Street, Torrance, CA 90505 (800) 736-1712

Midwest Branch Office (Chicago) : 110 E. State Pkwy, Schaumburg, IL 60173 (800) 944-0333

Southeast Branch Office (Atlanta): 1220 Kennestone Circle, Suite 108, Marietta, GA 30066 (678) 354-9470

www.intelligentactuator.com

JAPAN Headquarters: 577-1 Obane, Shimizu-ku, Shizuoka-shi, Shizuoka, 424-0103, JAPAN

The information contained in this product brochure may change without prior notice due to product improvements.

IAI Industrieroboter GmbH

Ober der Röth 4, D-65824 Schwalbach am Taunus, Germany

IAI (Shanghai) Co., Ltd.

Shanghai Jiahua Business Center A8-303, 808,
Hongqiao Rd., Shanghai 200030, China

IAI Robot (Thailand) Co., Ltd.

825 Phairojkijja Tower 7th Floor, Debaratana Rd.,
Bangna Nuea, Bangna, Bangkok 10260, Thailand