

Stopper Cylinder EC-ST15

Features

- Ideal as a workpiece-stopper on a conveyor line without air source.
- Workpieces up to 50kg.
- Maximum collision speed of workpiece: 40m/min. (in case of 9kg workpiece)

Product model number
Product model number
EC-ST15

Cable length	
Cable code	Cable length
0	without cable (connector included)
1 ~ 3	1 ~ 3m
4 ~ 5	4 ~ 5m
6 ~ 10	6 ~ 10m

Main specifications			
Lead		Ball screw lead (mm)	3
Horizontal	Payload (Note 2)	Payload (kg) (power-saving disabled)	5
	Speed/ acceleration/ deceleration	Maximum speed (mm/s)	200
		Minimum speed (mm/s)	4
		Rated acceleration/deceleration (G)	0.3
		Maximum acceleration/deceleration (G)	0.5
Vertical	Payload (Note 2)	Payload (kg) (power-saving disabled)	3
	Speed/ acceleration/ deceleration	Maximum speed (mm/s)	200
		Minimum speed (mm/s)	4
		Rated acceleration/deceleration (G)	0.3
		Maximum acceleration/deceleration (G)	0.5
Brake		Brake specification	non-exciting electromagnetic brake
		Brake-holding force (kgf)	12.5
Stroke (mm)			50

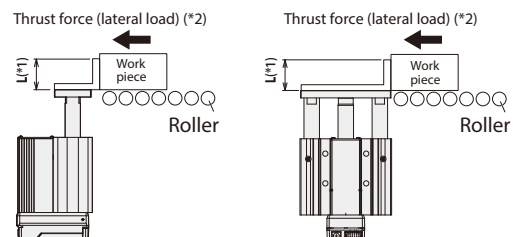
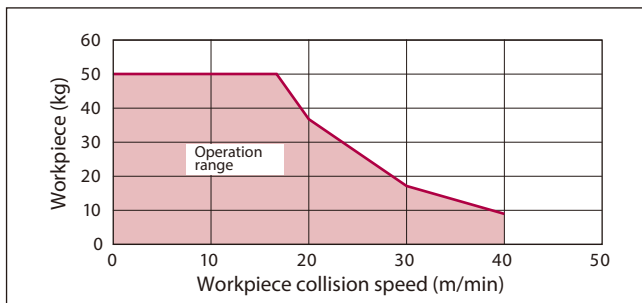
(Note 2) Based on speed of 200mm/s and acceleration/deceleration of 0.5G.

Options	* Please check the Options reference pages to confirm each option.
Name	Option code
Brake	B
Non-motor end specification	NM
PNP specification	PN
Twin power supply specification	TMD2
Battery-less absolute encoder specification	WA
Wireless communication specification	WL
Wireless axis-operation specification	WL2

(Note 1) The home position of the standard specification is set on the non-motor side.
Refer to the dimension drawing on back side for the home position.

Driving method	Ball screw $\Phi 10\text{mm}$, Rolled C10
Positioning repeatability	$\pm 0.15\text{mm}$
Rod	$\Phi 25\text{mm}$, Material: aluminum, hard alumite treatment
Guide shaft	S45C
Front bracket	S45C
Ambience operating temperature & humidity	0~40°C, 85%RH or less (non-condensing)
Degree of protection	IP20
Vibration and shock resistance	4.9m/s^2
Overseas standard	CE Marking, RoHS
Motor type	Stepper motor
Encoder type	Incremental / Battery-less absolute
Number of encoder pulses	800 pulse/rev

Chart of the correlation between mass and collision speed of the workpiece

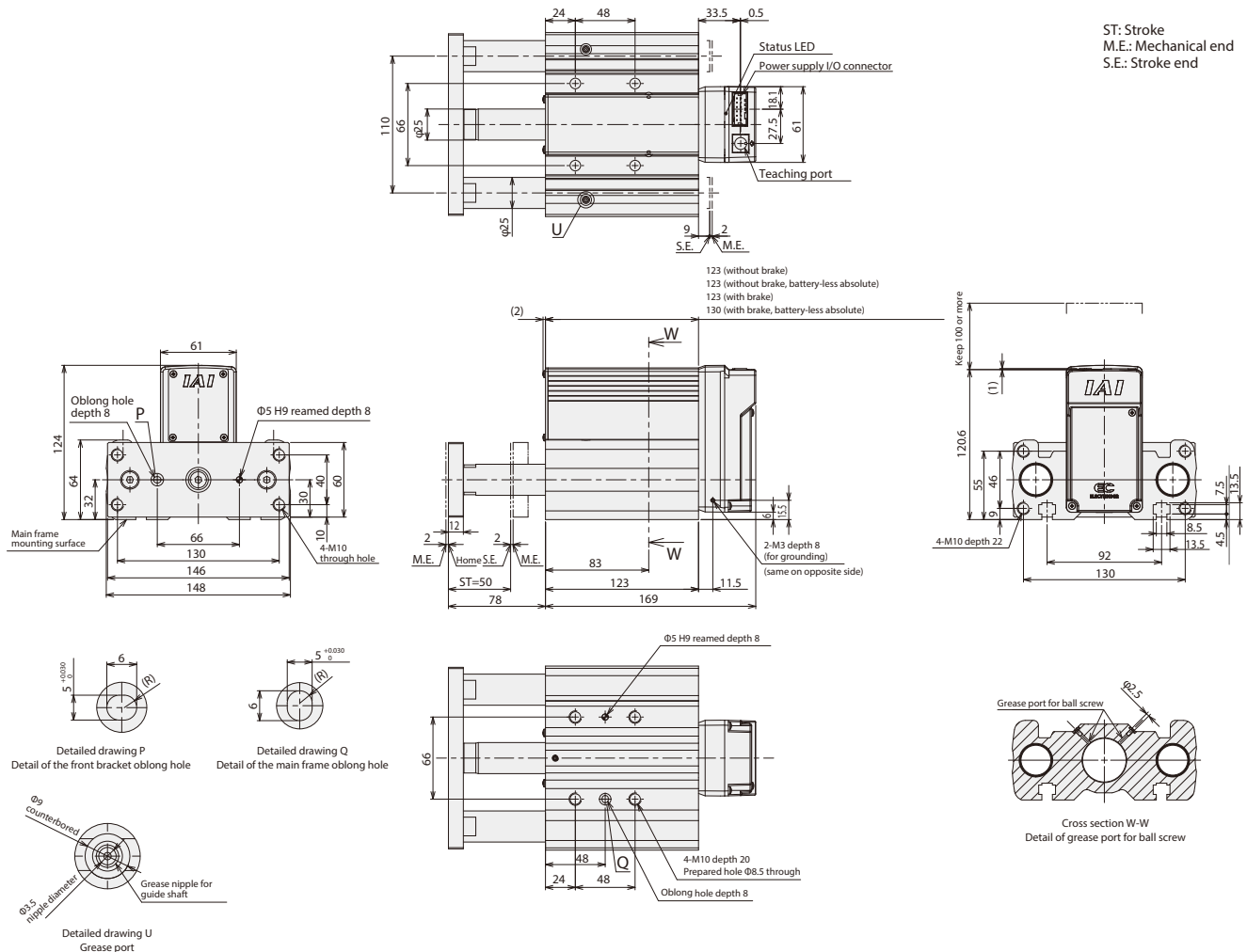


(*1) Use within the dimension L=50mm or smaller.

(*2) Allowable load of the thrust force by conveyor should be 500N or smaller.

EC	ST15	L	50		
Series	Type	Lead	Stroke	Cable length	Option
		L: 3mm	50: 50mm	O: Terminal type with connector	B: Brake
				1 : 1mm	NM: Non-motor end specification
				2 : 2mm	PN: PNP specification
				10: 10mm	TMD2: Twin power supply specification
					WA: Battery-less absolute encoder specification
					WL: Wireless communication specification
					WL2: Wireless manual operation specification

(Note) When performing a home return, the rod moves to M.E. Beware of possible interference with peripheral equipment.



Stroke (mm)		50
Mass (kg)	Without brake	5.06
	With brake	5.36

* The EC series is equipped with a built-in controller.
Refer to the ELECYLINDER catalog for the details of the built-in controller.

USA Headquarters & Western Region (Los Angeles): 2690 W. 237th Street, Torrance, CA 90505 (800) 736-1712
Midwest Branch Office (Chicago): 110 E. State Pkwy, Schaumburg, IL 60173 (800) 944-0333
Southeast Branch Office (Atlanta): 1220 Kennestone Circle, Suite 108, Marietta, GA 30066 (678) 354-9470
www.intelligentactuator.com

JAPAN Headquarters: 577-1 Obane, Shimizu-ku, Shizuoka-shi, Shizuoka, 424-0103, JAPAN
The information contained in this product brochure may change without prior notice due to product improvements.

Ober der Röth 4, D-65824 Schwalbach am Taunus, Germany

Shanghai Jiahua Business Center A8-303, 808,
Hongqiao Rd., Shanghai 200030, China

825 Phairokijja Tower 7th Floor, Debaratana Rd.,
Bangna Nuea, Bangna, Bangkok 10260, Thailand