

RCP2-GRM

ROBO Cylinder, 2-Finger Gripper, Medium Slider Type, Actuator Width 74mm, Pulse Motor

Model Specification Items	RCP2 — GRM — I — 28P — 1 — 14 —	<input type="checkbox"/>	<input type="checkbox"/>	<input type="checkbox"/>
	Series — Type — Encoder type — Motor type — Deceleration Ratio — Stroke — Applicable controller — Cable length — Options	I: Incremental * The Simple absolute encoder is also considered type "I".	28P: Pulse motor, 28□ size	1: 1/1 deceleration ratio
		P1: PCON-PL/PO/SE PSEL P3: PCON-CA PMEC/PSEP MSEP	N: None P: 1m S: 3m M: 5m X□: Custom Length R□: Robot cable	SB: Shaft bracket FB: Flange bracket

* See page Pre-47 for details on the model descriptions.



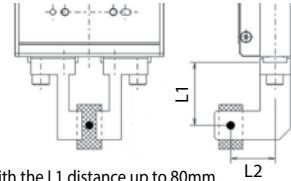
Technical References Appendix P.5



- (1) The maximum opening/closing speed indicates the operating speed on one side. The relative operating speed is twice this value.
- (2) The maximum gripping force is the sum of the gripping forces of both fingers, at a gripping point where there is no offset or overhang distance. The work piece weight that can be actually moved depends on the friction coefficient between the gripper fingers and the work piece, as well as on the shape of the work piece. As a rough guide, a work piece's weight should not exceed 1/10 to 1/20 of the gripping force. (See page A-86 for details.)
- (3) The rated acceleration while moving is 0.3G.

Gripping Force vs. Current Limit

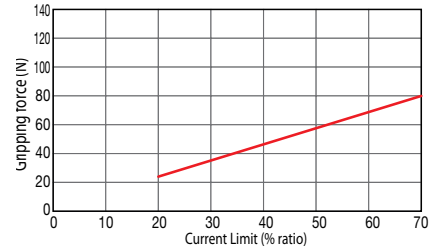
The gripping (pushing) force can be adjusted freely within the range of current limits of 20% to 70%.



* Operate with the L1 distance up to 80mm.

* The gripping force value in the graph below is when both L1 and L2 are at 0 mm. (For gripping force reference per L1 distance, see page A-87.)

The gripping force value is the sum of gripping forces of both fingers.



* The gripping force graph above shows reference numbers. Please allow margins up to ± 15%.

* Please note that, when gripping (pushing), the speed is fixed at 5mm/s.

Actuator Specifications

Lead and Payload

Model number	Deceleration Ratio	Maximum Gripping Force (N)	Stroke (mm)
RCP2-GRM-I-28P-1-14-①-②-③	1	80 (40 per side)	14 (7 per side)

Code explanation ① Applicable Controller ② Cable length ③ Options

Stroke and Max. Opening/Closing Speed

Deceleration ratio	Stroke	14 (mm)
	1	36.7 (per side)

(Unit: mm/s)

Stroke

Stroke (mm)	Standard price
14	—

② Cable Length

Type	Cable symbol	Standard Price
Standard	P (1m)	—
	S (3m)	—
	M (5m)	—
Special length	X06 (6m) ~ X10 (10m)	—
	X11 (11m) ~ X15 (15m)	—
	X16 (16m) ~ X20 (20m)	—
Robot Cable	R01 (1m) ~ R03 (3m)	—
	R04 (4m) ~ R05 (5m)	—
	R06 (6m) ~ R10 (10m)	—
	R11 (11m) ~ R15 (15m)	—
	R16 (16m) ~ R20 (20m)	—

* See page A-59 for cables for maintenance.

③ Options

Name	Option code	See page	Standard price
Flange bracket	FB	→ A-43	—
Shaft bracket	SB	→ A-55	—

Actuator Specifications

Item	Description
Drive System	Timing belt + trapezoidal screw (1.5 lead)
Positioning repeatability	±0.01mm
Backlash	0.15mm or less per side (constantly pressed out by a spring)
Lost motion	0.1mm or less per side
Guide	Cross roller guide
Allowable static load moment	Ma: 6.3 N·m, Mb: 6.3 N·m, Mc: 8.3 N·m
Weight	0.5kg
Ambient operating temperature, humidity	0 to 40°C, 85% RH or less (Non-condensing)

Dimensional Drawings

CAD drawings can be downloaded from the website.

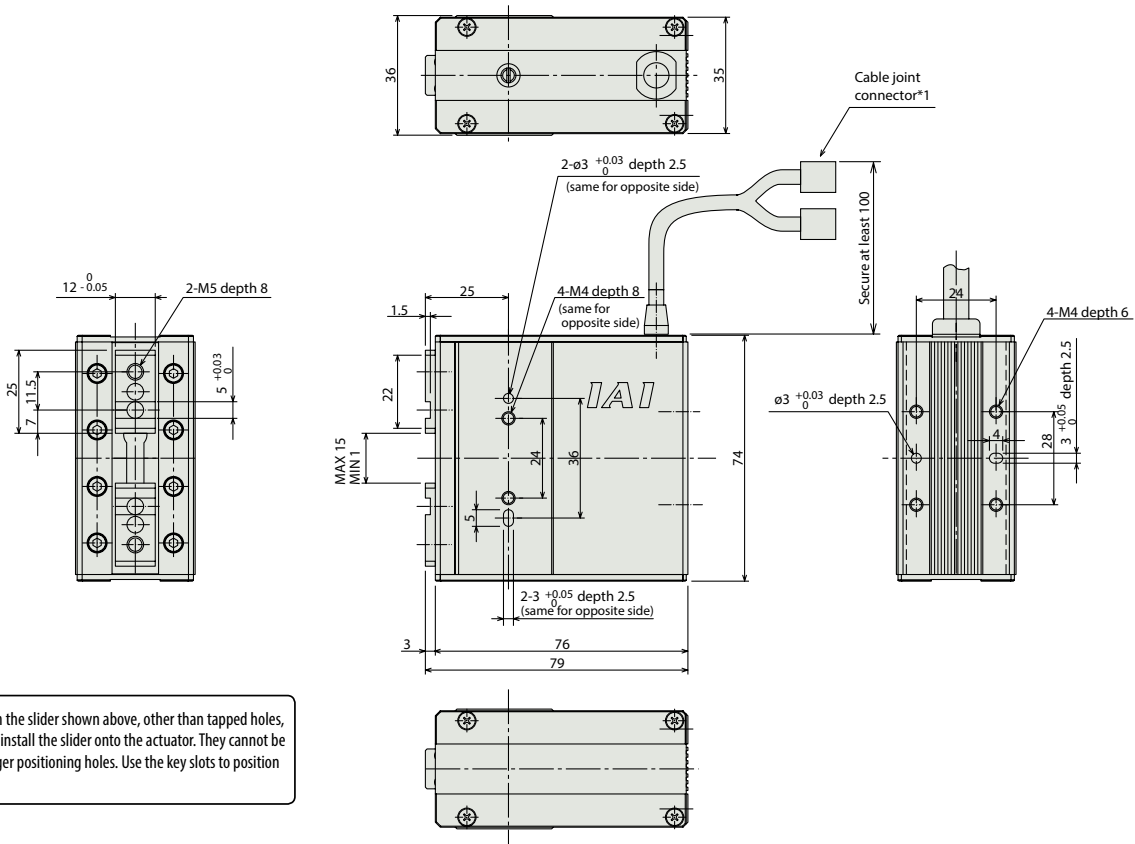
www.intelligentactuator.com

For Special Orders

Appendix P.15



*The opening side of the slider is the home position.
 (*1) Connect the motor and encoder cables here. See page A-59 for details on cables.



Note:
 The holes in the slider shown above, other than tapped holes, are used to install the slider onto the actuator. They cannot be used as finger positioning holes. Use the key slots to position the fingers.

Weight (kg) 0.5

① Applicable Controllers

RCP2 series actuators can be operated with the controllers indicated below. Select the type according to your intended application.

Name	External view	Model number	Features	Maximum number of positioning points	Input power	Power-supply capacity	Standard price	Reference page									
Solenoid Valve Type		PMEC-C-28PI-①-2-②	Easy-to-use controller, even for beginners	3 points	DC24V	Refer to P541	—	→ P537									
		PSEP-C-28PI-①-2-0	Simple controller operable with the same signal as a solenoid valve						→ P547								
Solenoid valve multi-axis type PIO specification		MSEP-C-③-④-①-2-0	Positioner type based on PIO control, allowing up to 8 axes to be connected	256 points					Refer to P618	—	→ P607						
Solenoid valve multi-axis type Network specification		MSEP-C-③-④-④-0-0	Field network-ready positioner type, allowing up to 8 axes to be connected														
Positioner type High-output specification		PCON-CA-28PI-①-2-0	Equipped with a high-output driver Positioner type based on PIO control	512 points								Refer to P618	—	→ P607			
Pulse-train type High-output specification		PCON-CA-28PI-PL□-2-0	Equipped with a high-output driver Pulse-train input type	(—)													
Field network type High-output specification		PCON-CA-28PI-④-0-0	Equipped with a high-output driver Supporting 7 major field networks	768 points													
Pulse Train Input Type (Differential Line Driver)		PCON-PL-28PI-①-2-0	Pulse train input type with differential line driver support	(—)											Refer to P628	—	→ P623
Pulse Train Input Type (Open Collector)		PCON-PO-28PI-①-2-0	Pulse train input type with open collector support														
Serial Communication Type		PCON-SE-28PI-N-0-0	Dedicated Serial Communication	64 points	Refer to P671	—	→ P665										
Program Control Type		PSEL-CS-1-28PI-①-2-0	Programmed operation is possible. Can operate up to 2 axes	1,500 points													

* This is for the single-axis PSEL. * ① indicates I/O type (NP/PN). * ② indicates power supply voltage (1: 100V / 2: 100~240V).
 * ③ indicates number of axes (1 to 8). * ④ indicates field network specification symbol. * □ indicates N (NPN specification) or P (PNP specification) symbol.