

RCP2-GRM

ROBO Cylinder 2-Finger Gripper Medium Slider Type 74mm Width Pulse Motor

■ Configuration: **RCP2** — **GRM** — **I** — **28P** — **1** — **14** — — —

Series — Type — Encoder — Motor — Deceleration Ratio — Stroke — Compatible Controllers — Cable Length — Option

I: Incremental
* The Simple absolute encoder is also considered type "I".

28P: 28 size Pulse motor

1: 1/1 deceleration ratio

14: 14mm (7mm per side)

P1: PCON
RPCON
PSEL

P3: PMEC
PSEP

N: None
P: 1m
S: 3m
M: 5m
X : Custom
R : Robot cable

SB: Shaft bracket
FB: Flange bracket

* See page Pre-35 for explanation of each code that makes up the configuration name.



Technical References P. A-5

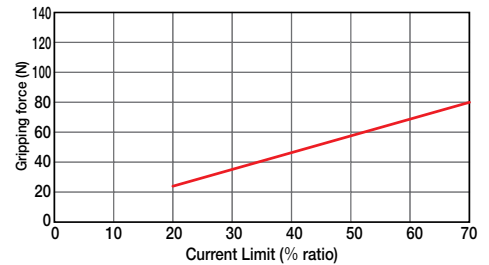


- (1) The maximum opening/closing speed indicates the operating speed on one side. The relative operating speed is twice this value.
- (2) The maximum gripping force is the sum of the gripping forces of both fingers, at a gripping point where there is no offset or overhang distance. The work piece weight that can be actually moved depends on the friction coefficient between the gripper fingers and the work piece, as well as on the shape of the work pieces. As a rough guide, a work piece's weight should not exceed 1/10 to 1/20 of the gripping force. (See page A-74 for details.)
- (3) The rated acceleration while moving is 0.3G.

■ Gripping Force Adjustment

The gripping (pushing) force can be adjusted freely within the range of current limits of 20% to 70%.

* The gripping forces in the following diagrams indicate the sums of gripping forces of both fingers.



* Please note that, when gripping (pushing), the speed is fixed at 5mm/s.

Actuator Specifications

■ Lead and Load Capacity

| Model | Deceleration Ratio | Max. Gripping Force (N) | Stroke (mm) |
|---------------------------|--------------------|-------------------------|-------------|
| RCP2-GRM-I-28P-1-14-①-②-③ | 1 | 80 | 14 |

Legend: ① Compatible controllers ② Cable length ③ Options

■ Stroke and Maxi. Opening/Closing Speed

| Deceleration Ratio | Stroke | 14 (mm) |
|--------------------|--------|---------|
| | 1 | 36.7 |

(Unit: mm/s)

Stroke List

| Stroke (mm) | Standard Price |
|-------------|----------------|
| 14 | — |

② Cable List

| Type | Cable Symbol | Standard Price |
|-----------------|-----------------------|----------------|
| Standard Type | P (1m) | — |
| | S (3m) | — |
| | M (5m) | — |
| Special Lengths | X06 (6m) ~ X10 (10m) | — |
| | X11 (11m) ~ X15 (15m) | — |
| | X16 (16m) ~ X20 (20m) | — |
| | R01 (1m) ~ R03 (3m) | — |
| Robot Cable | R04 (4m) ~ R05 (5m) | — |
| | R06 (6m) ~ R10 (10m) | — |
| | R11 (11m) ~ R15 (15m) | — |
| | R16 (16m) ~ R20 (20m) | — |

* See page A-39 for cables for maintenance.

③ Option List

| Name | Option Code | See Page | Standard Price |
|----------------|-------------|----------|----------------|
| Flange bracket | FB | → A-26 | — |
| Shaft bracket | SB | → A-36 | — |

Actuator Specifications

| Item | Description |
|----------------------------------|--|
| Drive System | Timing belt + trapezoidal screw (1.5 lead) |
| Positioning Repeatability | ±0.01 mm |
| Backlash | 0.15mm or less per side (constantly pressed out by a spring) |
| Lost Motion | 0.1mm or less per side |
| Guide | Cross roller guide |
| Allowable Static Load Moment | Ma: 6.3 N·m Mb: 6.3 N·m Mc: 8.3 N·m |
| Weight | 0.5kg |
| Ambient Operating Temp./Humidity | 0~40°C, 85% RH or less (non-condensing) |

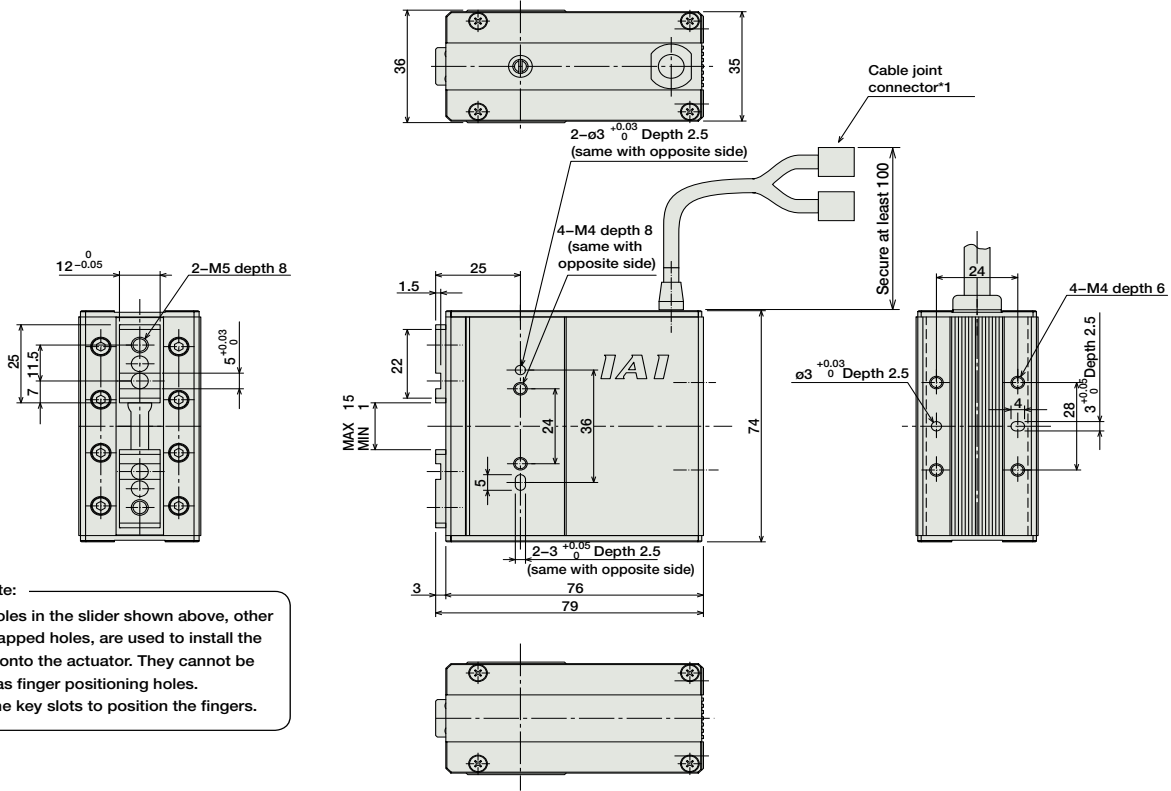
Dimensions

CAD drawings can be downloaded from IAI website. www.intelligentactuator.com



- * The opening side of the slider is the home position.
- *1 The motor-encoder cable is connected here. See page A-39 for details on cables.

For Special Order P. A-9



Note:
The holes in the slider shown above, other than tapped holes, are used to install the slider onto the actuator. They cannot be used as finger positioning holes. Use the key slots to position the fingers.

Weight (kg) 0.5

① Compatible Controllers

The RCP2 series actuators can operate with the controllers below. Select the controller according to your usage.

| Name | External View | Model | Description | Max. Positioning Points | Input Voltage | Power Supply Capacity | Standard Price | See Page |
|---|---------------|----------------------|---|-------------------------|------------------|-----------------------|----------------|----------|
| Solenoid Valve Type | | PMEC-C-28PI-NP-2-① | Easy-to-use controller, even for beginners | 3 points | AC100V AC200V | See P481 | - | → P477 |
| Splash-Proof Solenoid Valve Type | | PSEP-C-28PI-NP-2-0 | Operable with same signal as solenoid valve. Supports both single and double solenoid types. No homing necessary with simple absolute type. | | | | - | → P487 |
| Positioner Type | | PCON-C-28PI-NP-2-0 | Positioning is possible for up to 512 points | 512 points | DC24V | 2A max. | - | |
| Safety-Compliant Positioner Type | | PCON-CG-28PI-NP-2-0 | | | | | - | |
| Pulse Train Input Type (Differential Line Driver) | | PCON-PL-28PI-NP-2-0 | Pulse train input type with differential line driver support | (-) | DC24V | 2A max. | - | → P525 |
| Pulse Train Input Type (Open Collector) | | PCON-PO-28PI-NP-2-0 | Pulse train input type with open collector support | | | | - | |
| Serial Communication Type | | PCON-SE-28PI-N-0-0 | Dedicated to serial communication | 64 points | | | - | |
| Field Network Type | | RPCON-28P | Dedicated to field network | 768 points | | | - | → P503 |
| Program Control Type | | PSEL-C-1-28PI-NP-2-0 | Programmed operation is possible. Operation is possible on up to 2 axes | 1500 points | | | - | → P557 |

* This is for the single-axis PSEL.
* ① is a placeholder for the power supply voltage (1: 100V, 2: 100~240V).

- Slider Type
- Mini
- Standard
- Controllers Integrated
- Rod Type
- Mini
- Standard
- Controllers Integrated
- Table/Arm/Flat Type
- Mini
- Standard
- Gripper/ Rotary Type
- Linear Servo Type
- Cleanroom Type
- Splash-Proof
- Controllers
- PMEC /AMEC
- PSEP /ASEP
- ROBO NET
- ERC2
- PCON
- ACON
- SCON
- PSEL
- ASEL
- SSEL
- XSEL
- Pulse Motor
- Servo Motor (24V)
- Servo Motor (200V)
- Linear Servo Motor