

RCP2-SS8C

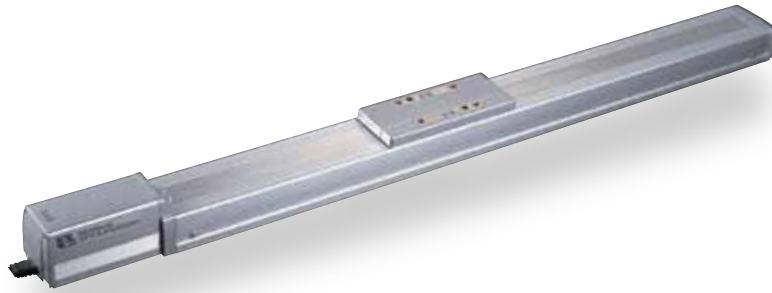
ROBO Cylinder Slider Type 80mm Width Pulse Motor Straight Type Steel Base Coupled

■ Configuration: **RCP2** — **SS8C** — **I** — **56P** — — — — —

Series — Type — Encoder — Motor — Lead — Stroke — Compatible Controllers — Cable Length — Option

I: Incremental * The Simple absolute encoder models are labeled as "I".
 56P: Pulse motor 56 □ size
 20: 20mm 10: 10mm 5: 5mm
 50: 50mm 1000: 1000mm (50mm pitch increments)
 P1: PCON RPCON PSEL P3: PMEC PSEP
 N: None P: 1m S: 3m M: 5m X □ □: Custom Length R □ □: Robot cable
 B: Brake NM: Reversed-home SR: Slider Roller

* See page Pre-35 for explanation of each code that makes up the configuration name.

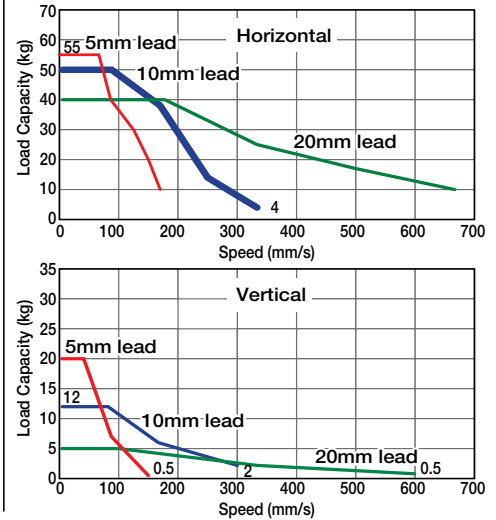


Technical References A-5

POINT Notes on Selection

- When the stroke increases, the maximum speed will drop to prevent the ball screw from reaching the critical rotational speed. Use the actuator specification table below to check the maximum speed at the stroke you desire.
- Since the RCP2 series use a pulse motor, the load capacity decreases at high speeds. Check in the Speed vs. Load Capacity graph to see if your desired speed and load capacity are supported.
- The load capacity is based on operation at an acceleration of 0.3G (0.2G for the 5mm-lead model, or when used vertically). These values are the upper limits for the acceleration.

■ Speed vs. Load Capacity
 Due to the characteristics of the pulse motor, the RCP2 series' load capacity decreases at high speeds. In the table below, check if your desired speed and load capacity are supported.



Actuator Specifications

Lead and Load Capacity

(Note 1) Please note that the maximum load capacity decreases as the speed increases.

Stroke and Maximum Speed

Model	Lead (mm)	Max. Load Capacity (Note 1)		Stroke (mm)
		Horizontal (kg)	Vertical (kg)	
RCP2-SS8C-I-56P-20-①-②-③-④	20	~ 40	~ 5	50 ~ 1000 (50mm increments)
RCP2-SS8C-I-56P-10-①-②-③-④	10	~ 50	~ 12	
RCP2-SS8C-I-56P-5-①-②-③-④	5	~ 55	~ 20	

Stroke Lead	50 ~ 800 (50mm increments)	~ 900 (mm)	~ 1000 (mm)
	20	666 <600>	625 <600>
10	333 <300>	310 <300>	255
5	165 <150>	155 <150>	125

* The values enclosed in < > apply to vertical setting. (Unit: mm/s)

Legend ① Stroke ② Compatible controller ③ Cable length ④ Options

① Stroke List

Stroke (mm)	Standard Price
50/100	—
150/200	—
250/300	—
350/400	—
450/500	—
550/600	—
650/700	—
750/800	—
850/900	—
950/1000	—

③ Cable List

Type	Cable Symbol	Standard Price
Standard	P (1m)	—
	S (3m)	—
	M (5m)	—
Special Lengths	X06 (6m) ~ X10 (10m)	—
	X11 (11m) ~ X15 (15m)	—
	X16 (16m) ~ X20 (20m)	—
Robot Cable	R01 (1m) ~ R03 (3m)	—
	R04 (4m) ~ R05 (5m)	—
	R06 (6m) ~ R10 (10m)	—
	R11 (11m) ~ R15 (15m)	—
	R16 (16m) ~ R20 (20m)	—

* See page A-39 for cables for maintenance.

④ Option List

Name	Option Code	See Page	Standard Price
Brake	B	→ A-25	—
Reversed-home	NM	→ A-33	—
Slider Roller	SR	→ A-36	—

Actuator Specifications

Item	Description
Drive System	Ball screw ø16mm C10 grade
Positioning Repeatability	±0.02mm
Lost Motion	0.1mm or less
Base	Material: Special alloy steel
Allowable Static Moment	Ma: 198.9 N·m Mb: 198.9 N·m Mc: 416.7 N·m
Allowable Dynamic Moment (*)	Ma: 36.3 N·m Mb: 36.3 N·m Mc: 77.4 N·m
Overhang Load Length	Ma direction: 450mm or less; Mb-Mc direction: 450mm or less
Ambient Operating Temp./Humidity	0~40°C, 85% RH or less (Non-condensing)

(*) Based on 10,000km travel life.

Directions of Allowable Load Moments

