

IX-HNN70

Large SCARA Robot Ceiling-Mount Type: Arm Length 700mm, Vertical (Z) Axis 200mm (400mm)

IX-INN70

Large SCARA Robot Inverse Type: Arm Length 700mm, Vertical (Z) Axis 200mm (400mm)

Type / Ceiling-mount/inverse type Arm length / 700mm Load capacity / 5kg rated/20kg maximum

Model items Series Model Cable length Controller type Standard I/O Expansion I/O I/O cable length Power-supply voltage
 (Example) IX - HNN7020 - 5L - KX - N - EEE - 2 - 2



* Refer to P. 10 for details on the model items.

* The above model code represents a combination of robot and controller.

Model/Specifications

Model	Axis configuration	Arm length (mm)	Motor capacity (W)	Work envelope	Positioning repeatability (mm) (Note 1)	Maximum operating speed (Note 2)	Standard cycle time (sec) (Note 3)	Load capacity (kg)		Axis 3 push force (N)		Axis 4 allowable load	
								Rated	Maximum	Push action (Note 4)	Maximum thrust (Note 4)	Allowable inertial moment (kg·m ²) (Note 5)	Allowable torque (N·m)
IX-HNN7020-5L-KX-□-□-□-2 [IX-HNN7040-5L-KX-□-□-□-2] IX-INN7020-5L-KX-□-□-□-2 [IX-INN7040-5L-KX-□-□-□-2]	Axis 1 Arm 1	350	750	±125°	±0.015 (XY)	6597mm/s (Composite speed)	0.50	5	20	188	265	0.1	6.7
	Axis 2 Arm 2	350	400	±145°									
	Axis 3 Vertical axis	—	400	200mm [400mm]	±0.010	1583mm/s							
	Axis 4 Rotating axis	—	100	±360°	±0.005	1200°/s							

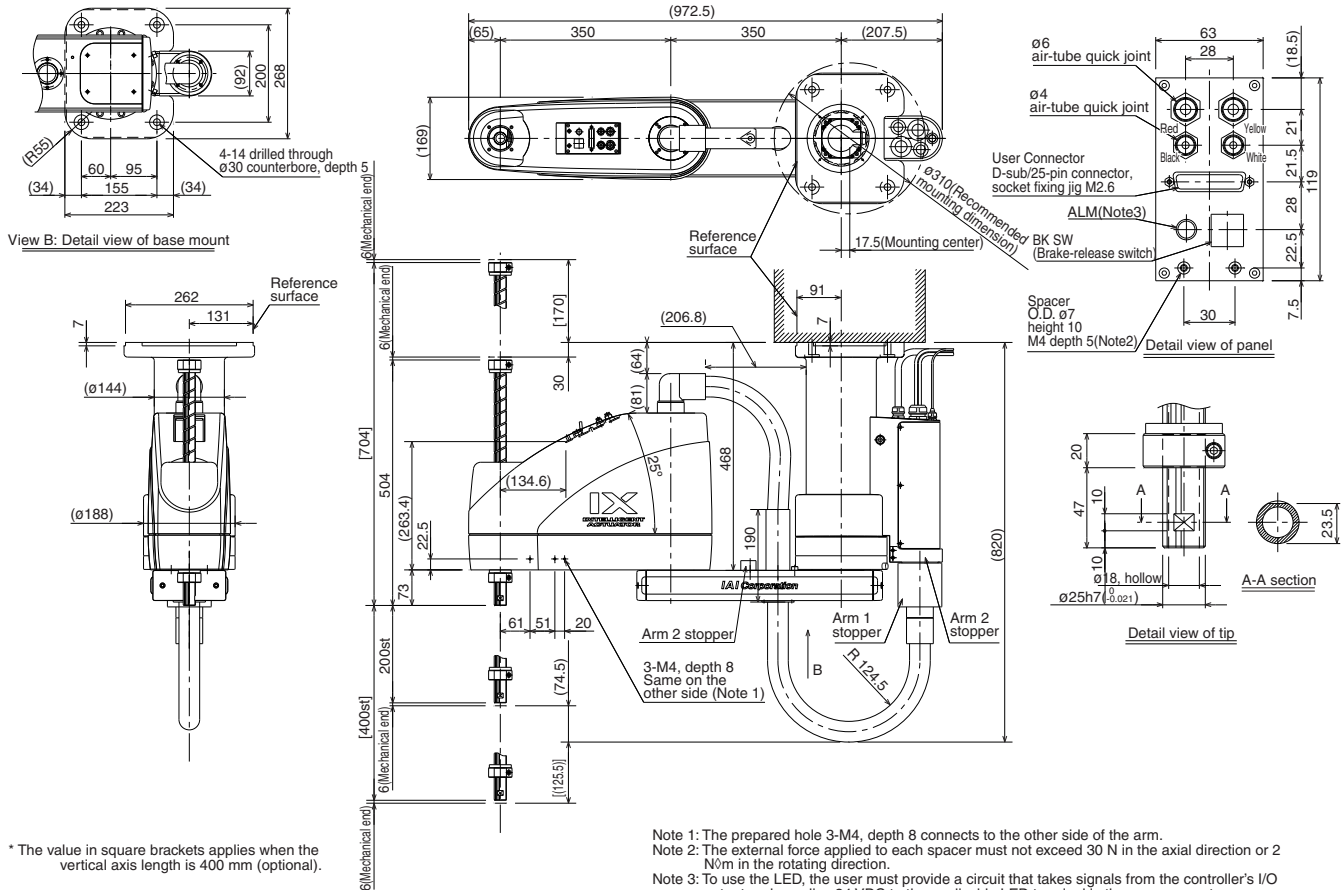
* In the above model code, specify the desired controller in □. For details, refer to "Explanation of SCARA Robot Model Items" (P. 10).

Common Specifications

Encode type	Absolute	Ambient temperature/humidity	Temperature: 0-40°C, humidity: 20-85%RH or below (non-condensing)
User wiring	25-conductor AWG26 D-sub/25-pin connector with shield (socket)	Robot weight	58kg
User tubing	Air tube (O.D. ø6, I.D. ø4) x 2 (Normal working pressure 0.8MPa) Air tube (O.D. ø4, I.D. ø2.5) x 2 (Normal working pressure 0.8MPa)	Cable length (Note 8)	5L: 5m (standard), 10L: 10m (optional)
Alarm indicator (Note 6)	Red, small LED indicator x 1 (24 VDC must be supplied.)		
Brake-release switch (Note 7)	Brake-release switch to prevent the vertical axis from dropping (24 VDC must be supplied.)		

Dimensions

* The following illustrations also apply to the inverse type. The only difference is that the robot is installed upside down. (Refer to P. 2.)



* The value in square brackets applies when the vertical axis length is 400 mm (optional).

Applicable Controller Specifications

Applicable controller	Features	Maximum I/O points (inputs/outputs)	Serial communication unit	Power-supply voltage	Page
XSEL-KX	General-purpose type offering excellent expandability	Up to 192 points	Can be installed.	AC200V	P37



Refer to P. 6 for the explanations of (Note 1) to (Note 8).