

# RCS2-RT6

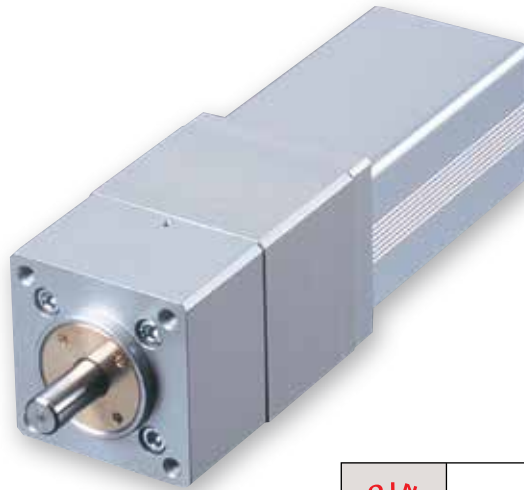
Robo Cylinder, Rotary, Straight Motor Model, Actuator Width 64mm, 200V Servo Motor

Model Specification Items	<b>RCS2</b>	<b>— RT6</b>	<b>— I</b>	<b>— 60</b>	<b>— 18</b>	<b>— 300</b>	<input type="checkbox"/>	<input type="checkbox"/>	<input type="checkbox"/>	<b>— L</b>
	Series	Type	Encoder type	Motor type	Deceleration Ratio	Oscillation Angle	Applicable controller	Cable length	Options	
			I: Incremental	60: 60W Servo motor	18: 1/18	300: 300-degrees	T1: XSEL-J/K T2: SCON SSEL XSEL-P/Q XSEL-R/S	N: None P: 1m S: 3m M: 5m X <input type="checkbox"/> : Custom length R <input type="checkbox"/> : Robot cable	See Options below.	

\* See page Pre-47 for details on the model descriptions.



\*CE compliance is optional.



Technical References Appendix P.5



- (1) The thrust load is the mechanical strength of the output axis at rest. When selecting, take into account the load moment and the load inertia.
- (2) The rated acceleration while moving is 0.3G.

### Actuator Specifications

#### Lead and Payload

Model number	Motor Output (W)	Deceleration Ratio	Rated Torque (N·m)	Allowable Moment of Inertia (kg·m <sup>2</sup> )	Oscillation Angle (deg)
RCS2-RT6-I-60-18-300- <input type="checkbox"/> - <input type="checkbox"/> - <input type="checkbox"/> -L	60	1/18	2.4	2.5 x 10 <sup>-3</sup> or less	300

#### Deceleration Ratio and Max. Speed

Deceleration ratio	Oscillation Angle	300 (deg)
	1/18	500

Code explanation  Applicable Controller  Cable Length  Options

#### Stroke

Oscillation Angle (deg)	Standard price
300	—

#### ② Cable Length

Type	Cable symbol	Standard Price
Standard	P (1m)	—
	S (3m)	—
	M (5m)	—
Special length	X06 (6m) ~ X10 (10m)	—
	X11 (11m) ~ X15 (15m)	—
	X16 (16m) ~ X20 (20m)	—
Robot Cable	R01 (1m) ~ R03 (3m)	—
	R04 (4m) ~ R05 (5m)	—
	R06 (6m) ~ R10 (10m)	—
	R11 (11m) ~ R15 (15m)	—
	R16 (16m) ~ R20 (20m)	—

\* See page A-59 for cables for maintenance.

#### ③ Options

Name	Option code	See page	Standard price
CE compliance	CE	→ A-42	—
Limit switch (standard)	L	→ A-51	—

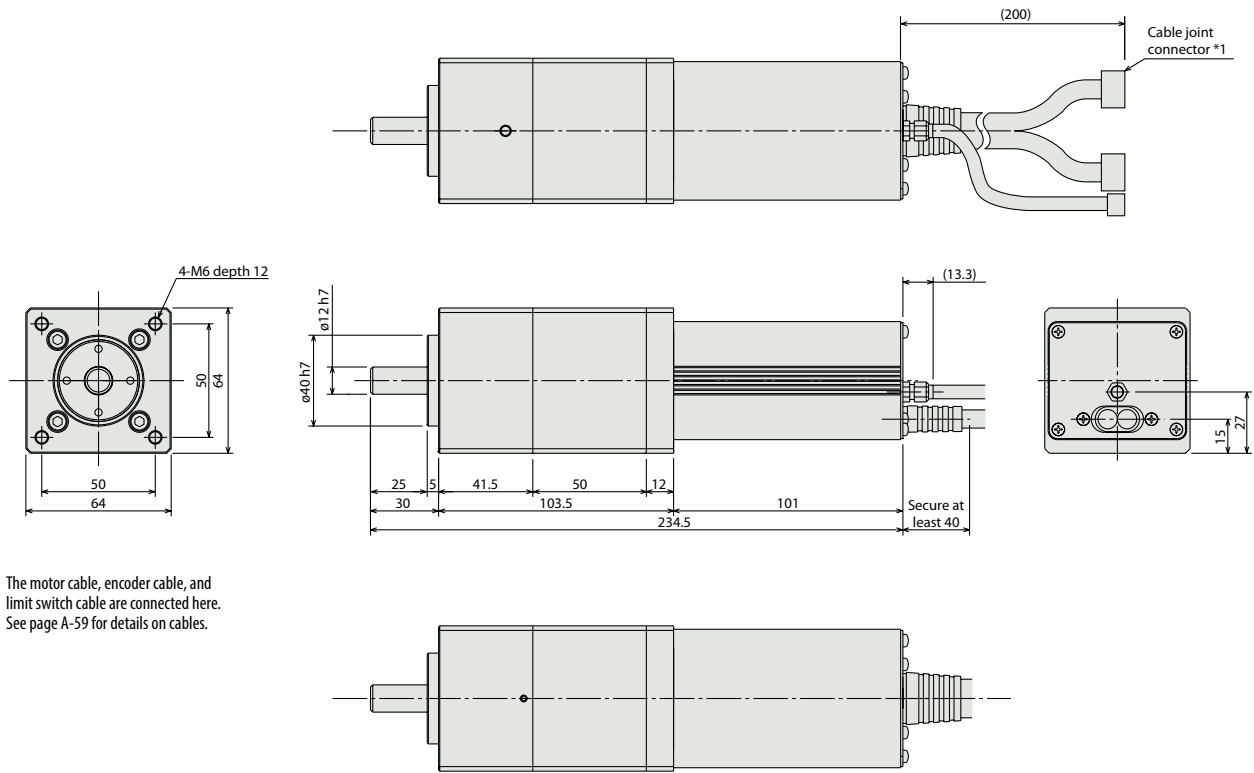
#### Actuator Specifications

Item	Description
Drive System	Ball speed reducer
Positioning repeatability	±0.02 degrees
Lost motion	0.1 degrees or less
Base	Material: Aluminum, white alumite treated
Allowable load moment	Ma: 6.8 N·m or less
Thrust load	100N or less
Ambient operating temperature, humidity	0 to 40°C, 85% RH or less (Non-condensing)

Dimensional Drawings

CAD drawings can be downloaded from the website. [www.intelligentactuator.com](http://www.intelligentactuator.com)

For Special Orders Appendix P.15



(\*1) The motor cable, encoder cable, and limit switch cable are connected here. See page A-59 for details on cables.

Weight (kg) 1.9

① Applicable Controllers

RCS2-series actuators can be operated with the following controllers. Select an appropriate controller type according to your application.

Name	External view	Model number	Features	Maximum number of positioning points	Input power	Power supply capacity	Standard price	Reference page		
Positioner mode		SCON-CA-60I-NP-2-①	Up to 512 positioning points are supported.	512 points	Single-phase 100VAC Single-phase 200VAC 3-phase 200VAC (XSEL-P/Q/R/S ONLY)	218 VA max. *Power supply capacity will vary depending on the controller, so please refer to the instruction manual for details.	—	→ P643		
Solenoid valve mode			Actuators can be operated through the same control used for solenoid valves.	7 points						
Field network type			Movement by numerical specification is supported.	768 points						
Pulse-train input control type			Dedicated pulse-train input type	(-)						
Positioner multi-axis, network type		MSCON-C-1-60-④-0-①	Up to 6 axes can be operated. Movement by numerical specification is supported.	256 points	3-phase 200VAC (XSEL-P/Q/R/S ONLY)	218 VA max. *Power supply capacity will vary depending on the controller, so please refer to the instruction manual for details.	—	→ P655		
Program control type, 1 to 2 axes		SSEL-CS-1-60I-NP-2-①	Program operation is supported. Up to 2 axes can be operated.	20,000 points					—	→ P685
Program control type, 1 to 8 axes		XSEL-①-1-60I-N1-EEE-2-④	Program operation is supported. Up to 8 axes can be operated.	Varies depending on the number of axes connected						

\* This is for the single-axis MSCON, SSEL, and XSEL.

\* ④ indicates the XSEL type (J / K / P / Q / R / S).

\* ④ indicates field network specification symbol.

\* ① indicates the power-supply voltage type (1: 100 V / 2: Single-phase 200 V).

\* ④ indicates the power-supply voltage type (1: 100 V / 2: Single-phase 200 V / 3: Three-phase 200 V).