

RCP2CR-GRLS

Cleanroom ROBO Cylinder 2-Finger Gripper Mini Lever Type 42mm Width
Pulse motor

■ Configuration: **RCP2CR** — **GRLS** — **I** — **20P** — **30** — **180** — — —

Series — Type — Encoder — Motor — Deceleration Ratio — Stroke — Compatible Controllers — Cable Length — Option

I: Incremental
* The simple absolute encoder is also considered type "I".

20P: Pulse motor 20 size

30: 1/30 deceleration ratio

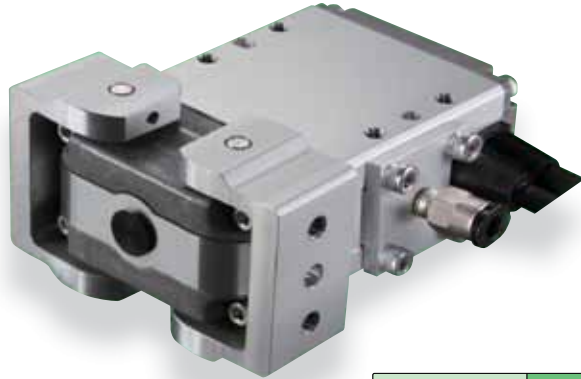
180: 180 degrees (90 degrees per side)

P1: PCON
RCON
PSEL
P3: PMEC
PSEP

N: None
P: 1m
S: 3m
M: 5m
X : Custom

NM: Reversed-home
FB: Flange bracket
SB: Shaft bracket

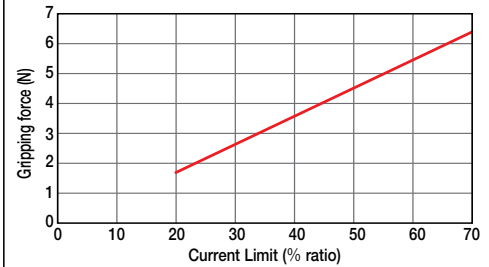
* See page Pre-35 for an explanation of the naming convention.



Technical References P. A-5

■ Gripping Force Adjustment
The gripping (pushing) force can be adjusted freely within the range of current limits of 20% to 70%.

* The gripping forces in the following diagrams indicate the sum of the gripping forces of both fingers.



* Please note that, when gripping (pushing), the speed is fixed at 5 degrees/s.



- (1) The maximum opening/closing speed indicates the operating speed on one side. The relative operating speed is twice this value.
- (2) The maximum gripping force is the sum of the gripping forces of both fingers, at a gripping point distance of 0mm and no overhang distance. The workpiece weight that can be actually moved depends on the friction coefficient between the gripper fingers and the workpiece, as well as on the shape of the workpiece. As a rough guide, a workpiece's weight should not exceed 1/10 to 1/20 of the gripping force. (See page A-77 for details.)
- (3) The rated acceleration while moving is 0.3G.

Actuator Specifications

■ Lead and Load Capacity

Model	Deceleration Ratio	Max. Gripping Force (N)	Stroke (deg)
RCP2CR-GRLS-I-20P-30-180-①-②-③	30	6.4	180 (90 per side)

Legend: ① Compatible controllers ② Cable length ③ Options

■ Stroke and Maxi. Opening/Closing Speed

Deceleration Ratio	Stroke	180 (deg)
	30	600

(Unit: degrees/s)

Stroke List

Stroke (deg)	Standard Price
180	—

② Cable List

Type	Cable Symbol	Standard Price
Standard Type (Robot Cables)	P (1m)	—
	S (3m)	—
	M (5m)	—
Special Lengths	X06 (6m) ~ X10 (10m)	—
	X11 (11m) ~ X15 (15m)	—
	X16 (16m) ~ X20 (20m)	—
		—

* The standard cable is the motor-encoder integrated robot cable.

* See page A-39 for cables for maintenance.

③ Option List

Name	Option Code	See Page	Standard Price
Reversed-home	NM	→ A-33	—
Flange bracket	FB	→ A-26	—
Shaft bracket	SB	→ A-36	—

Actuator Specifications

Item	Description
Drive System	Worm gear + helical gear
Positioning Repeatability	±0.01 mm
Backlash	1 degree or less per side (constantly pressed out by a spring)
Lost Motion	0.1 degree or less per side
Guide	—
Allowable Static Load Moment	—
Weight	0.2kg
Ambient Operating Temp./Humidity	0~40°C, 85% RH or less (non-condensing)

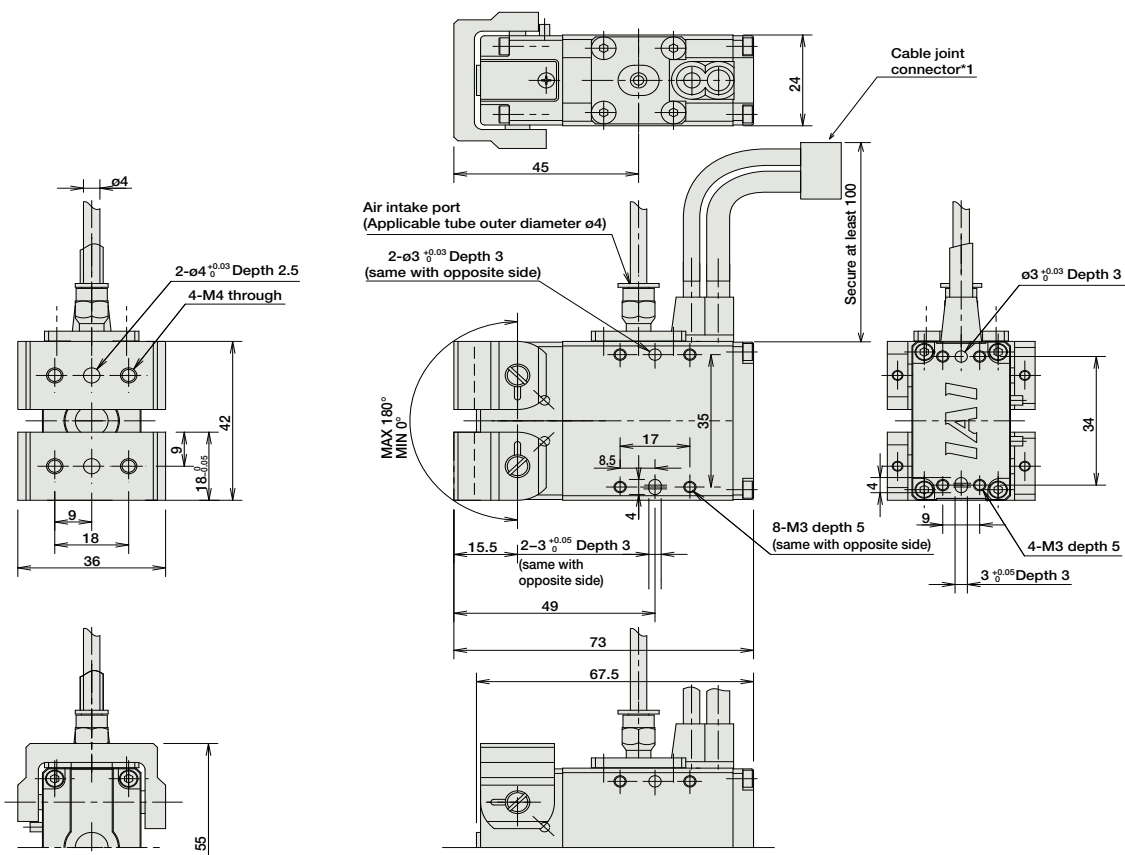
Dimensions

CAD drawings can be downloaded from IAI website. www.intelligentactuator.com

For Special Orders P. A-9



- * The opening side of the slider is the home position.
- *1 The motor-encoder cable is connected here. See page A-39 for details on cables.



Weight (kg) 0.2

① Compatible Controllers

The RCP2CR series actuators can operate with the controllers below. Select the controller according to your usage.

Name	External View	Model	Description	Max. Positioning Points	Input Voltage	Power Supply Capacity	Standard Price	See Page
Solenoid Valve Type		PMEC-C-20PI-NP-2-①	Easy-to-use controller, even for beginners	3 points	AC100V AC200V	See P481	-	→ P477
	Splash-Proof Solenoid Valve Type		PSEP-C-20PI-NP-2-0					
Positioner Type			PCON-C-20PI-NP-2-0	Positioning is possible for up to 512 points	512 points	DC24V	2A max.	-
	PCON-CG-20PI-NP-2-0							
Pulse Train Input Type (Differential Line Driver)		PCON-PL-20PI-NP-2-0	Pulse train input type with differential line driver support	(-)	DC24V	2A max.	-	→ P525
Pulse Train Input Type (Open Collector)		PCON-PO-20PI-NP-2-0	Pulse train input type with open collector support					
Serial Communication Type		PCON-SE-20PI-N-0-0	Dedicated to serial communication	64 points	DC24V	2A max.	-	-
Field Network Type		RPCON-20P	Dedicated to field network	768 points	DC24V	2A max.	-	→ P503
Program Control Type		PSEL-C-1-20PI-NP-2-0	Programmed operation is possible. Operation is possible on up to 2 axes	1500 points	DC24V	2A max.	-	→ P557

* This is for the single-axis PSEL.
* ① is a placeholder for the power supply voltage (1: 100V, 2: 100~240V).