

# RCS2-RT6

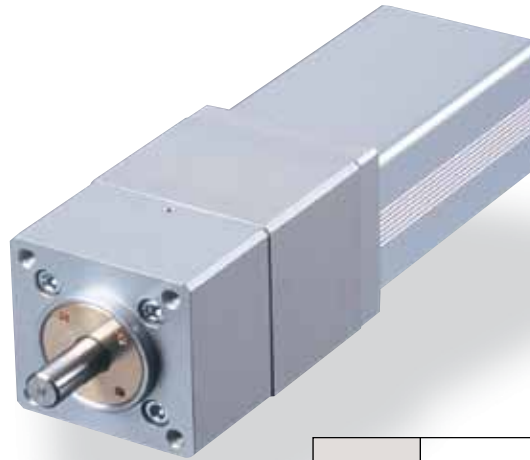
ROBO Cylinder Rotary Straight Motor Model 64mm Width 200V Servo Motor

■ Configuration: **RCS2** — **RT6** — **I** — **60** — **18** — **300** —  —  — **L**

Series — Type — Encoder — Motor — Deceleration Ratio — Oscillation Angle — Compatible Controllers — Cable Length — Option

I: Incremental      60 : 60W Servo Motor      18: 1/18      300: 300degrees      T1:XSEL~J/K      N : None      L : Limit switch (equipped as standard)  
 T2:SCON      P : 1m      S : 3m  
 SSEL      M : 5m  
 XSEL-P/Q      X  : Custom  
    R  : Robot cable

\* See page Pre-35 for an explanation of the naming convention.



Technical References P. A-5

**POINT** Notes on Selection

- (1) The thrust load is the mechanical strength of the output axis at rest. When selecting, take into account the load moment and the load inertia.
- (2) The rated acceleration while moving is 0.3G.

### Actuator Specifications

#### Lead and Load Capacity

| Model                      | Motor Output (W) | Deceleration Ratio | Rated torque (N·m) | Allowable Moment of Inertia (kg·m <sup>2</sup> ) | Oscillation Angle (deg) |
|----------------------------|------------------|--------------------|--------------------|--|-------------------------|
| RCS2-RT6-I-60-18-300-①-②-L | 60               | 1/18               | 2.4                | 2.5×10 <sup>-2</sup> or less                     | 300                     |

Legend: ① Compatible controller    ② Cable length

#### Stroke and Maximum Speed

| Oscillation Angle / Deceleration Ratio | 300 (deg) |
|--|-----------|
| 1/18                                   | 500       |

(Unit: degrees/s)

#### Stroke List

| Oscillation Angle (deg) | Standard Price |
|-------------------------|----------------|
| 300                     | —              |

#### ② Cable List

| Type            | Cable Symbol          | Standard Price |
|-----------------|-----------------------|----------------|
| Standard Type   | P (1m)                | —              |
|                 | S (3m)                | —              |
|                 | M (5m)                | —              |
| Special Lengths | X06 (6m) ~ X10 (10m)  | —              |
|                 | X11 (11m) ~ X15 (15m) | —              |
|                 | X16 (16m) ~ X20 (20m) | —              |
| Robot Cable     | R01 (1m) ~ R03 (3m)   | —              |
|                 | R04 (4m) ~ R05 (5m)   | —              |
|                 | R06 (6m) ~ R10 (10m)  | —              |
|                 | R11 (11m) ~ R15 (15m) | —              |
|                 | R16 (16m) ~ R20 (20m) | —              |

\* See page A-39 for cables for maintenance.

### Actuator Specifications

| Item                             | Description                                |
|----------------------------------|--|
| Drive System                     | Ball speed reducer                         |
| Positioning Repeatability        | ±0.02 degrees                              |
| Lost Motion                      | 0.1 degrees or less                        |
| Base                             | Material: Aluminum (white alumite treated) |
| Allowable Load Moment            | 6.8N·m or less                             |
| Thrust load                      | 100N or less                               |
| Ambient Operating Temp./Humidity | 0 ~ 40°C, 85% RH or less (non-condensing)  |

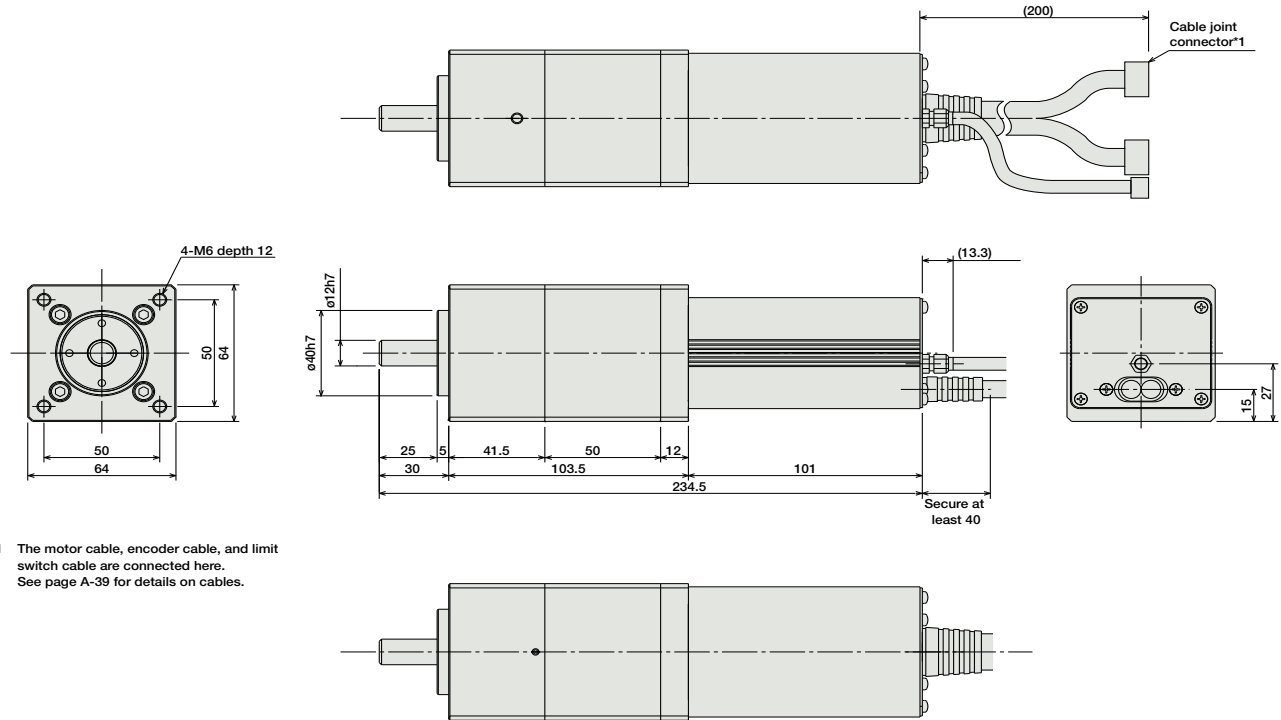
Dimensions

CAD drawings can be downloaded from IAI website. [www.intelligentactuator.com](http://www.intelligentactuator.com)

For Special Orders P. A-9



\* For more information on homing, see page A-79.



\*1 The motor cable, encoder cable, and limit switch cable are connected here. See page A-39 for details on cables.

Weight (kg) 1.9

① Compatible Controllers

The RCS2 series actuators can operate with the controllers below. Select the controller according to your usage.

| Name                           | External View | Model                  | Description   | Max. Positioning Points | Input Voltage  | Power Supply Capacity                                       | Standard Price | See Page |
|--------------------------------|---------------|------------------------|---|-------------------------|--|---|----------------|----------|
| Positioner Mode                |               | SCON-C-60-NP-2-①       | Positioning is possible for up to 512 points                            | 512 points              | Single-phase AC100V<br>Single-phase AC200V<br>Three-phase AC200V (XSEL-P/Q only) | 360VA max.<br><br>* When operating a 150W single-axis model | -              | → P547   |
| Solenoid Valve Mode            |               |                        | Operable with the same controls as the solenoid valve                   | 7 points                |  |   |                |          |
| Serial Communication Type      |               |                        | Dedicated to serial communication                                       | 64 points               |  |   |                |          |
| Pulse Train Input Control Type |               |                        | Dedicated to pulse train input  | (-)                     |  |   |                |          |
| Program Control 1-2 Axes Type  |               | SSEL-C-1-60-NP-2-①     | Programmed operation is possible. Operation is possible on up to 2 axes | 20000 points            |  |   | -              | → P577   |
| Program Control 1-6 Axes Type  |               | XSEL-②-1-60-N1-EEE-2-③ | Programmed operation is possible. Operation is possible on up to 6 axes | 20000 points            |  |   | -              | → P587   |

\* For SSEL and XSEL, only applicable to the single-axis model.  
 \* ① is a placeholder for the power supply voltage (1: 100V, or 2: single-phase 200V).  
 \* ② is a placeholder for the type name of XSEL ("J", "K", "P", "Q").  
 \* ③ is a placeholder for the type of power supply voltage (1: 100V, 2: single-phase 200V, or 3: 3-phase 200V).

- Slider Type
- Mini
- Standard
- Controllers Integrated
- Rod Type
- Mini
- Standard
- Controllers Integrated
- Table/Arm/Flat Type
- Mini
- Standard
- Gripper/Rotary Type
- Linear Servo Type
- Cleanroom Type
- Splash-Proof
- Controllers
- PMEC/AMEC
- PSEP/ASEP
- ROBO NET
- ERC2
- PCON
- ACON
- SCON
- PSEL
- ASEL
- SSEL
- XSEL
- Pulse Motor
- Servo Motor (24V)
- Servo Motor (200V)
- Linear Servo Motor