

RCS2-GR8

ROBO Cylinder 2-Finger Gripper Long Stroke Slider Type 104 ~ 284mm Width
200V Servo Motor

■ Configuration: **RCS2** — **GR8** — **I** — **60** — **5** — — —

Series — Type — Encoder — Motor — Deceleration Ratio — Stroke — Compatible Controllers — Cable Length

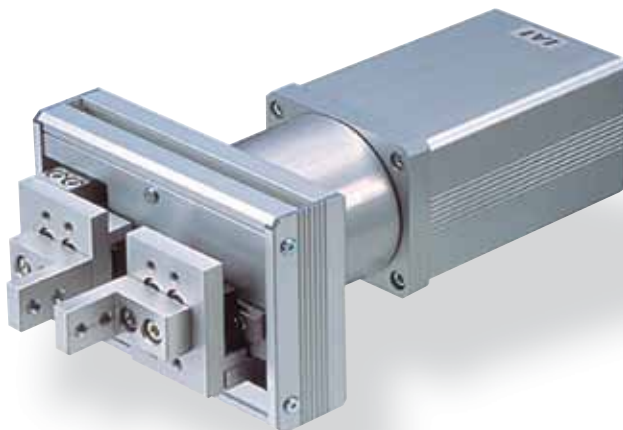
I : Incremental 60: 60W Servo motor 5 : 1/5

Stroke
20: 20mm
40: 40mm
(60): 60mm
(80): 80mm
100: 100mm
(120): 120mm
(200): 200mm

Compatible Controllers
T1 : XSEL-J/K
T2 : SCON
SSEL
XSEL-P/Q

Cable Length
N : None
P : 1m
S : 3m
M : 5m
X : Custom Length
R : Robot Cable

* See page Pre-35 for explanation of each code that makes up the configuration name.



* Please note that, when gripping (pressing), the speed is fixed at 10mm/s.

Technical References P. A-5

POINT
Notes on Selection

(1) Stroke values enclosed in "()" are (60, 80, 120, 200) are semi-standard models.
(2) The maximum gripping force is the sum of both fingers.

Actuator Specifications

Lead and Load Capacity

Model	Motor Output (W)	Deceleration Ratio	Max. Gripping Force (N)	Stroke (mm)
RCS2-GR8-I-60-5-①-②-③	60	1/5	45.1	20, 40, (60), (80), 100, (120), (200)

Legend: ① Stroke ② Compatible controller ③ Cable length

① Stroke List

Stroke (mm)	Standard Price
20	-
40	-
(60)	-
(80)	-
100	-
(120)	-
(200)	-

③ Cable List

Type	② Cable Symbol	Standard Price
Standard Type	P (1m)	-
	S (3m)	-
	M (5m)	-
Special Lengths	X06 (6m) ~ X10 (10m)	-
	X11 (11m) ~ X15 (15m)	-
	X16 (16m) ~ X20 (20m)	-
Robot Cable	R01 (1m) ~ R03 (3m)	-
	R04 (4m) ~ R05 (5m)	-
	R06 (6m) ~ R10 (10m)	-
	R11 (11m) ~ R15 (15m)	-
	R16 (16m) ~ R20 (20m)	-

* See page A-39 for cables for maintenance.

Actuator Specifications

Item	Description
Drive System	Rack and pinion
Positioning Repeatability	±0.04mm
Lost Motion	0.7mm or less
Base	Material: Aluminum (white alumite treated)
Allowable Static Load Moment	Ma: 5.1 N-m Mb: 5.1 N-m Mc: 10.4 N-m
Ambient Operating Temp./Humidity	0 ~ 40°C, 85% RH or less (non-condensing)

