

RCA2-TFA3N

ROBO Cylinder Mini Table Type Short-Length Flat Model 61mm Width
24V Servo Motor Lead Screw Model

■ Configuration: **RCA2** — **TFA3N** — **I** — **10** — — **30** — — —

Series — Type — Encoder — Motor — Lead — Stroke — Compatible Controllers — Cable Length — Option

I: Incremental
* The simple absolute encoder is also considered type "I".

10: 10W Servo motor

4S: 4mm lead screw
2S: 2mm lead screw
1S: 1mm lead screw

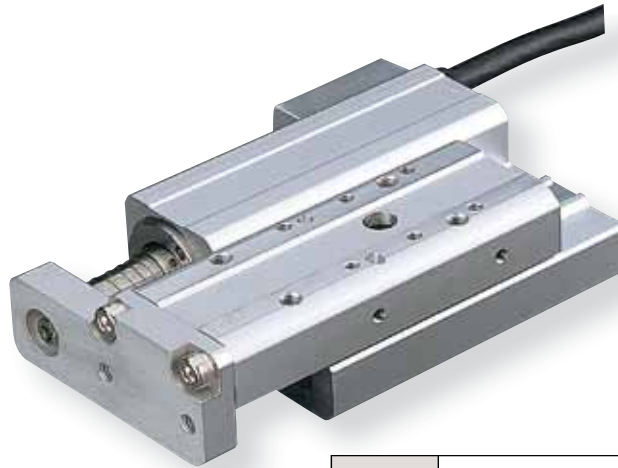
30: 30mm

A1: ACON
RACON
ASEL
A3: AMEC
ASEP

N: None
P: 1m
S: 3m
M: 5m
X : Custom

K2: Connector cable exit direction
LA: Power-saving

* See page Pre-35 for an explanation of the naming convention.



Power-saving

Technical References P. A-5

POINT
Notes on Selection

- (1) The load capacity is based on operation at an acceleration of 0.2G. This is the upper limit of the acceleration.
- (2) This model uses a Lead screw, therefore please ensure that your usage is appropriate for its characteristics. (See page Pre-42 for more information.)

Actuator Specifications

Lead and Load Capacity

Model	Motor Output (W)	Feed Screw	Lead (mm)	Max. Load Capacity		Rated Thrust (N)	Positioning Repeatability (mm)	Stroke (mm)
				Horizontal (kg)	Vertical (kg)			
RCA2-TFA3N-I-10-4S-30-①-②-③	10	Lead screw	4	0.25	0.125	25.1	±0.05	30 (Fixed)
RCA2-TFA3N-I-10-2S-30-①-②-③			2	0.5	0.25	50.3		
RCA2-TFA3N-I-10-1S-30-①-②-③			1	1	0.5	100.5		

Legend ① Compatible controller ② Cable length ③ Options

Stroke and Maximum Speed

Lead	Stroke	
	4 (mm)	30 (mm)
Lead screw	4	200
	2	100
	1	50

(Unit: mm/s)

Stroke List

Stroke (mm)	Standard Price
30	-

② Cable List

Type	Cable Symbol	Standard Price
Standard (Robot Cables)	P (1m)	-
	S (3m)	-
	M (5m)	-
Special Lengths	X06 (6m) ~ X10 (10m)	-
	X11 (11m) ~ X15 (15m)	-
	X16 (16m) ~ X20 (20m)	-
		-

* The RCA2 comes standard with a robot cable.

* See page A-39 for cables for maintenance.

③ Option List

Name	Option Code	See Page	Standard Price
Connector cable exit direction	K2	→ A-32	-
Power-saving	LA	→ A-32	-

Actuator Specifications

Item	Description
Drive System	Lead screw ø4mm C10 grade
Lost Motion	0.3mm or less (initial value)
Frame	Material: Aluminum (white alumite treated)
Allowable Dynamic Moment (Note)	Ma: 9.9 N·m Mb: 9.9 N·m Mc: 3.3 N·m
Ambient Operating Temp./Humidity	0~40°C, 85% RH or less (non-condensing)
Service Life	Horizontal: 10 million cycles Vertical: 5 million cycles

(Note) Based on a 5,000 km service life set for the guide.

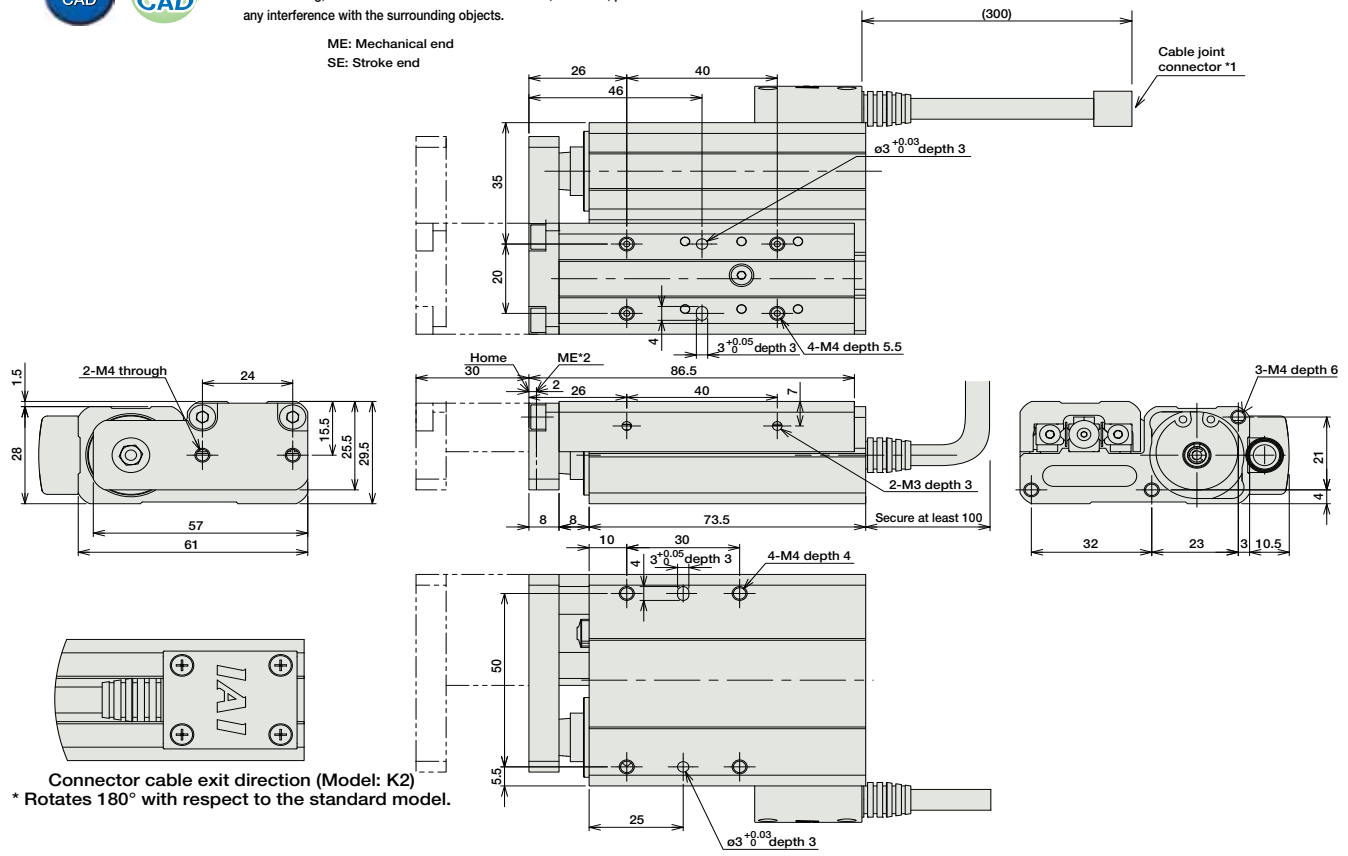
Dimensions

CAD drawings can be downloaded from IAI website. www.intelligentactuator.com



- *1 The motor-encoder cable is connected here. See page A-39 for details on cables.
- *2 When homing, the table moves to the mechanical end; therefore, please watch for any interference with the surrounding objects.

For Special Orders P. A-9



Connector cable exit direction (Model: K2)
* Rotates 180° with respect to the standard model.

■ Dimensions/Weight by Stroke

Stroke	30
Weight (kg)	0.4

① Compatible Controllers

The RCA2 series actuators can operate with the controllers below. Select the controller according to your usage.

Name	External View	Model	Description	Max. Positioning Points	Input Voltage	Power Supply Capacity	Standard Price	See Page	
Solenoid Valve Type		AMEC-C-101①-NP-2-1	Easy-to-use controller, even for beginners	3 points	DC24V	(Standard) 1.3A rated 4.4A max. (Power-saving) 1.3A rated 2.5A max.	-	→ P477	
	Splash-Proof Solenoid Valve Type		ASEP-C-101①-NP-2-0				Operable with same signal as solenoid valve. Supports both single and double solenoid types. No homing necessary with simple absolute type.	-	→ P487
		ASEP-CW-101①-NP-2-0		-					
Positioner Type		ACON-C-101①-NP-2-0	Positioning is possible for up to 512 points	512 points			-		
Safety-Compliant Positioner Type		ACON-CG-101①-NP-2-0					-		
Pulse Train Input Type (Differential Line Driver)		ACON-PL-101①-NP-2-0	Pulse train input type with differential line driver support	(-)			-		→ P535
Pulse Train Input Type (Open Collector)		ACON-PO-101①-NP-2-0	Pulse train input type with open collector support						
Serial Communication Type		ACON-SE-101①-N-0-0	Dedicated to serial communication	64 points			-		
Field Network Type		RACON-101①	Dedicated to field network	768 points			-		→ P503
Program Control Type		ASEL-C-1-101①-NP-2-0	Programmed operation is possible. Operation is possible on up to 2 axes	1500 points	-		→ P567		

* This is for the single-axis ASEL.
* ① is a placeholder for the code "LA" if the power-saving option is specified.

- Slider Type
- Mini
- Standard
- Controllers Integrated
- Rod Type
- Mini
- Standard
- Controllers Integrated
- Table/Arm/Flat Type
- Mini
- Standard
- Gripper/Rotary Type
- Linear Servo Type
- Cleanroom Type
- Splash Proof
- Controllers
- PMEC/AMEC
- PSEP/ASEP
- ROBO NET
- ERC2
- PCON
- ACON
- SCON
- PSEL
- ASEL
- SSEL
- XSEL
- Pulse Motor
- Servo Motor (24V)
- Servo Motor (200V)
- Linear Servo Motor